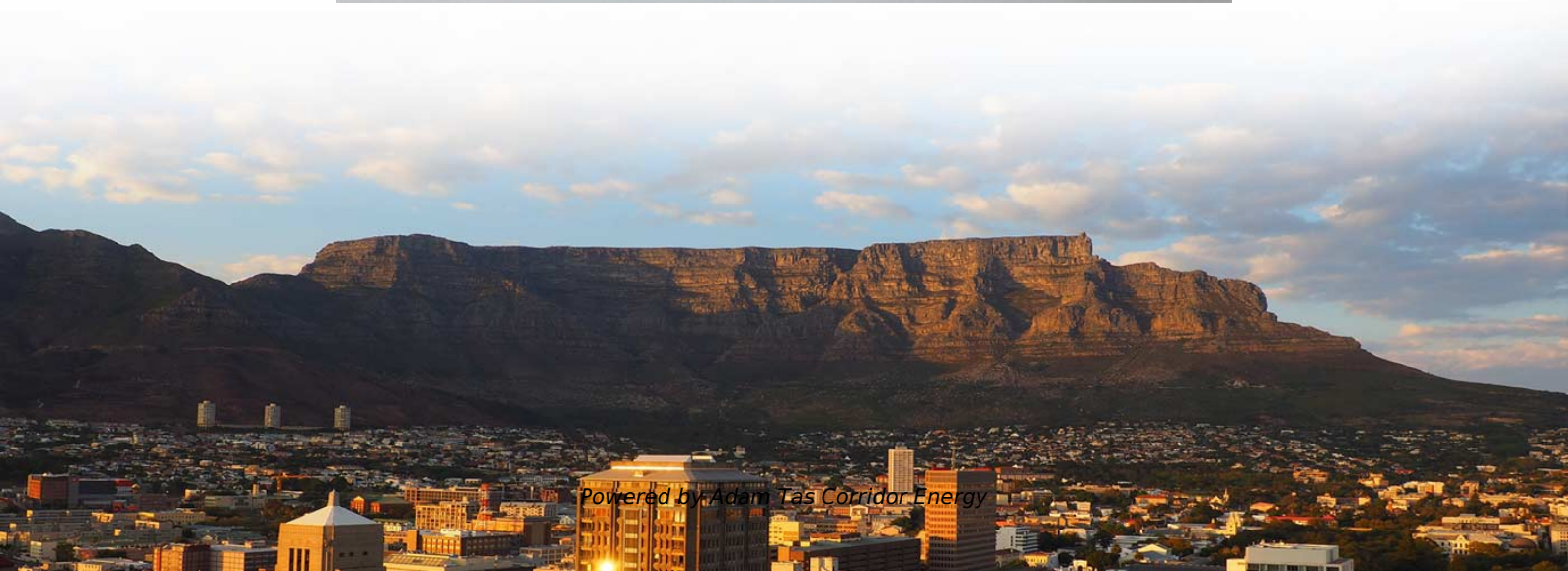




Adam Tas Corridor Energy

What do I and d mean in fiber optic sensors





Overview

Optical fibers can be used as sensors to measure, , and other quantities by modifying a fiber so that the quantity to be measured modulates the,,, or transit time of light in the fiber. Sensors that vary the intensity of light are the simplest, since only a simple source and detector are required. Due to its small size, low cost and ease of fabrication leading it to replace traditional sensors which were used frequently before th birth of fiber optic sensors. Further there are many points why fiber optic sensors are used in place of traditional size and. The optical fiber consists of the core and the cladding, which have different refractive indexes.



What do I and d mean in fiber optic sensors

Optical Fiber Sensors: Working Principle, Applications,



When the incident light hits the core-clad interface at angles larger than its critical angle, the light is completely reflected and guided in the fiber. In

Fiber Optic Sensors: Principles, Types, and Uses

4: Are fiber optic current sensors expensive? While the initial cost of fiber optic current sensors can be higher than traditional electrical sensors, their



Introduction to Fiber Optic Sensors and their Types

Introduction to Fiber Optic Sensors and their Types with Applications In the year 1960, laser light was invented and after the invention of lasers, researchers had

Fiber Optic Sensors: Short Review and Applications

Abstract An extensive review of optical fiber sensors and the most beneficial fi applications is



presented in this chapter. Although electrical sensing technologies have been successfully deployed in countless

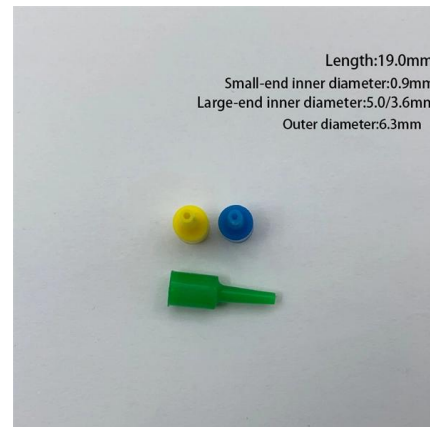


Fiber Optic Sensors: Fundamentals, Principles & Applications

Optical Fiber (Transmission Medium, Sensing Element) Light modulated due to interaction with parameter of interest (Measurand)

Fiber Optic Cables, Adapters, Couplers, Connectors & Other

Fiber Optic Cables, Adapters, Couplers, Connectors & Other Components At L-com, we are a global leader of wired and wireless connectivity products, offering a wide range of solutions across many



Fiber Optic Sensors: Types and Real-World Uses

In summary, fiber optic sensors offer numerous advantages for long-distance sensing and communication, such as small size, lightweight design,



What are Fiber Optic Sensors?

Fiber optic sensors are advanced sensing tools that use light - rather than electricity - to measure environmental changes like temperature, pressure,



What is a Fiber Optic Sensor?

Learn all about the principles, structures, and features of eight sensor types according to their detection principles.

Fiber Optic Sensors: Types, Working Principle

This article explores the different types of Fiber Optic Sensors, their working principles, and various applications. We'll delve into Intrinsic, Extrinsic, and



What is a Fiber Optic Sensor?

A fiber optic sensor operates with an optical fiber cable connected to a dedicated light source. These sensors offer great mounting flexibility and can be used in a



Fiber Optic Sensors , Precision, Speed & Versatility in

Explore the advantages of fiber optic sensors, showcasing their precision, speed, and versatility in various applications, from medical to



Fiber Optic Sensors: Principles, Characteristics, and

Fiber optic sensors utilize the propagation characteristics of light within optical fibers to detect environmental changes. The basic working principle is that



Fiber Optic Sensor : Types, Working, Interfacing & Its

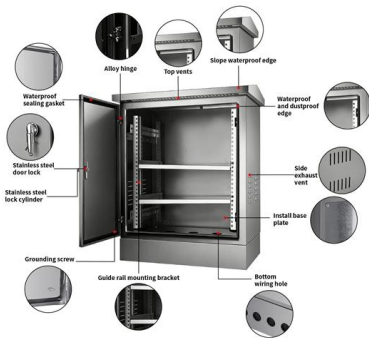
What is a Fiber Optic Sensor? A sensor that uses optical fiber as a detecting element is known as a fiber optic sensor. In remote sensing, fibers play





CHAPTER 09 FIBER OPTIC SENSORS

Above fig. shows the vibration sensor that consists of two optical fibers held in close proximity to each other. When light is injected into one of the optical fiber, the light expand into a cone of light whose



Optical Fiber Sensors Guide

Optical fiber sensors offer attractive characteristics that make them very suitable and, in some cases, the only viable sensing solution. Some of the key attributes of fiber sensors are summarized below.

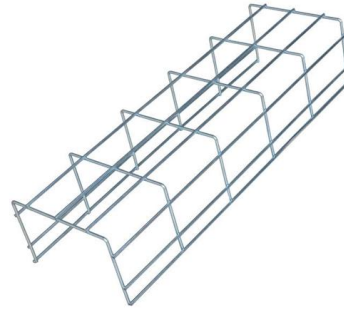


What Are Fiber Optic Sensors and How to Choose the

Fiber optic sensors are pivotal components in modern sensing technology, underpinning high-precision detection across critical industries from

Introduction to Fiber Optic Sensing

Distributed and quasi-distributed fiber optic sensors are systems that connect opto-electronic interrogators to an optical fiber (or cable), converting the fiber to an array of distributed sensors. The



SC connector X 12

CHAPTER 09 FIBER OPTIC SENSORS

Environment surrounding the sensors. The most commonly found fiber optic chemical sensors are- 1) Distal type probe in which the indicator is immobilised at the tip of bifurcated fiber optic

What Are Fiber Optic Sensors and How Do They Work?

Lightweight and Compact: Fiber optic sensors are typically lightweight and compact, making them easy to install and integrate into existing systems.



Fiber Sensors

Fiber Sensors almost always use LEDs as the light source. The light emitted from LEDs oscillates in the vertical and horizontal directions and is referred to as



Fiber Optic Sensors: Fundamentals and Applications

Presentation Focus The major focus of this presentation will be on distributive fiber optic sensors which has seen the greatest usage However, key applications for point sensors will be discussed The

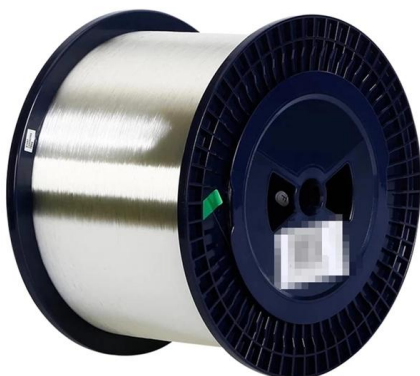


Fiber Optic Sensor : Types, Working, Interfacing & Its

Fiber Optic Sensor : Working, Interface with Arduino, Types & Its Applications November 28, 2022 By WatElectronics Fiber optic sensor is a new

Fiber Optic Sensors: Fundamentals, Principles & Applications

Radiation absorption creates electronic excited states that are trapped by localized defects for extended periods of time. Heating the material enables the trapped states to interact with phonons and decay



Fiber-optic sensor

Optical fibers can be used as sensors to measure strain, temperature, pressure and other quantities by modifying a fiber so that the quantity to be measured modulates the intensity, phase, polarization, wavelength or transit time of light in the fiber. Sensors that vary the intensity of light are the simplest, since only a simple source and detector are required. A particularly



useful feature of intrinsic fiber-optic sensors is that they can, if required, provide distributed sensing over very large distances.

A Beginner's Guide to Understanding Fiber

In today's fast-paced digital world, the demand for high-speed, reliable communication has never been greater. At the heart of



Fiber Optic Sensor

Long-base sensors integrate the measurement over a long measurement base. They are also known as long-gage sensors. Distributed sensors are able to sense at any point along a single fiber line,



Optical Fiber Sensors: Working Principle, Applications, and Limitations

Fiber-optic technology emerged originally for applications in data transmission and telecommunications. However, sensors based on fiber-optics have been developed rapidly because of their excellent



Contact Us

For datasheets, pricing, or custom telecom energy solutions, please visit:



<https://koskolong.co.za>