



Adam Tas Corridor Energy

What does EF stand for in an optical module





Overview

EF stands for "Electro-Focus": automatic focusing on EF lenses is handled by a dedicated electric motor built into the lens. The EF lens mount was launched at the same time as the Canon EOS SLR camera system in 1987. EFin in Optics refers to Encircled Flux, which is a measure of the total optical power enclosed within a certain radius in an optical system, crucial for assessing the performance of imaging devices.



What does EF stand for in an optical module

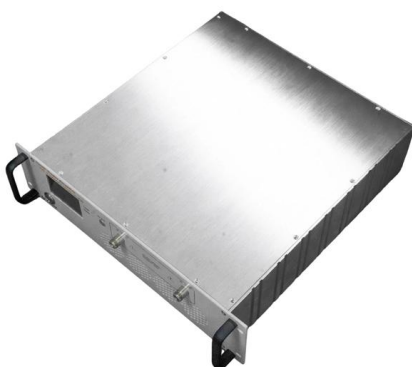


Comprehensive Guide to Optical Transceiver

Introduction Optical modules are critical components in fiber optic communications, enabling the conversion between electrical and optical signals.

Common Symbols & Abbreviations

Technical reference information on common optical system symbols and abbreviations.



Canon Lens Types Explained: EF, EF-S, EF-M, and RF

The term "EF" stands for Electro Focus, which highlights the integration of electronic components that enable automatic focusing. These lenses were first introduced in

Optical module

An optical module is a typically hot-pluggable optical transceiver used in high-bandwidth data communications applications. Optical modules



typically have an electrical interface on the side that

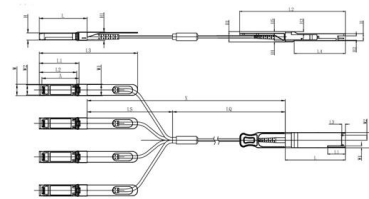


Understanding Optical Modules: Types and

Optical modules come in various types, and their external structures are not exactly the same. However, their basic compositional structure includes the following

Optical Transceivers Guide: SFP, QSFP, CFP Modules

Complete optical transceiver reference: SFP, SFP+, QSFP28, CFP specifications. Distance ranges, wavelengths, applications for data centers.



Unit mm

QSFP28	L	L1	L2	L3	L4	W	W1	W2	H	H1	H2	H3	H4	H5	H6
Max	72.2	-	128	4.35	61.4	18.45	-	6.2	8.6	12.4	5.35	2.5	1.6	2.0	-
Type	72.0	-	4.20	61.2	18.35	-	-	8.5	12.2	5.2	2.3	1.5	1.8	6.55	-
Min	68.8	16.5	124	4.05	61.0	18.25	2.2	5.8	8.4	12.0	5.05	2.1	1.3	1.6	-

SFP28	L	L1	L2	L3	W	W1	W2	H	H1	A
Max	57.6	47.7	44.55	119.9	13.8	14.0	12.3	8.7	10.3	45.25
Type	57.4	47.5	44.35	117.9	13.55	13.5	12.1	8.5	10.1	45
Min	57.2	47.3	44.15	115.9	13.3	13.6	11.9	8.4	9.9	44.65



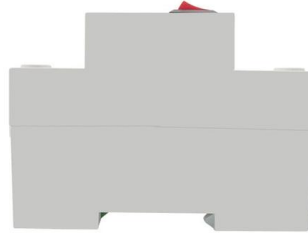
The complete guide to Canon's lens terms

EF stands for Electro-Focus and this applies to almost every Canon lens that's intended for use with the company's full-frame DSLR cameras (and



Canon EF lens mount

The EF lens mount is the standard lens mount on Canon 's EOS family of cameras. EF stands for "Electro-Focus": automatic focusing on EF lenses is handled by a



What is an EF lens?

What is an EF lens?. The technology might not be entirely unique to Canon and their lenses, but it certainly does set them apart from their rival competition

EF Optics Abbreviation Meaning

EFin in Optics refers to Encircled Flux, which is a measure of the total optical power enclosed within a certain radius in an optical system, crucial for assessing the performance of imaging devices.



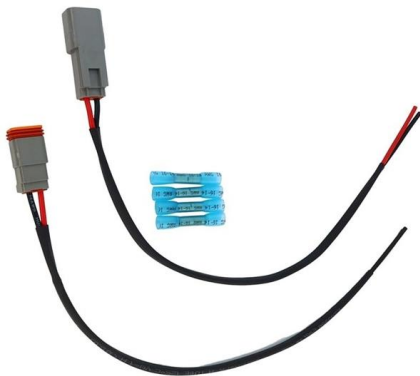
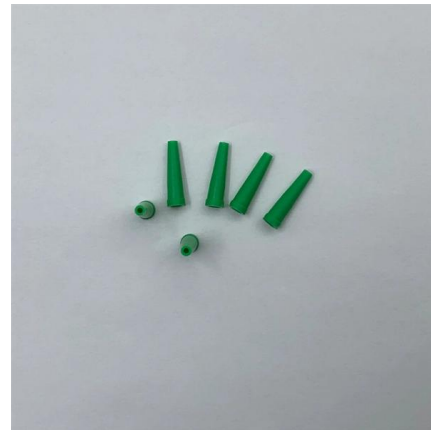
What Does Ef Mean On A Camera Lens?

Understanding Camera Lens Markings: What Does "EF" Mean? When diving into the world of photography, one quickly realizes that the jargon



Laser Types in Optical Transceivers: A Comprehensive

Optical transceivers are critical components in modern fiber-optic communication systems, acting as the bridge between electrical and optical



Canon Lens Abbreviations and What They Mean (An

Lens abbreviations are the set of initials that you can find after the lens's focal point and its aperture in its name. These initials are also seen before

What does EF stand for? (Canon)

Explanation from Canon The original EOS camera system was introduced in 1987. At its heart was the EF lens mount, connecting lenses to the camera body in a fully electronic way for the first time. Apart





Audio Science Review (ASR) Forum

Audio reviews, science and engineering discussions. Please note: you must be a Forum Donor to create threads/post items for sale here. This is done to reduce the probability of scams.



Everything You Need to Know About Optical Modules

Optical modules are electronic devices used in communication systems to transmit optical signals. These modules convert electrical signals into optical



What Does Ef Mean On A Camera Lens?

The "EF" designation on Canon lenses stands for "Electro-Focus," indicating a lens that is part of Canon's innovative EF mount system. This system

Demystifying Optical Transceivers: Your Top FAQs

FAQ Summary of optical modules: answers on types, compatibility, design, troubleshooting, and glossary for 2025 network upgrades and maintenance.



What Is an SFP Optical Module and How to Choose One

What Is an SFP Optical Module? An SFP module (Small Form-factor Pluggable) is a compact device used for transmitting and receiving data over fiber-optic

What is an EF lens?

Canon uses a standard lens mount called EF. EF lenses were introduced in 1987 for Canon SLR cameras, and EF stands for "Electro-Focus" because it has a built-in



Introduction to DML and EML Modulation for Optical

Optical Module Background and Basic Principle In the introduction of product parameters of optical modules, we often mention the modulation mode as

