



Adam Tas Corridor Energy

What does a complete cable tray system include





Overview

The main components of a cable tray system include tray sections, fittings, supports, and accessories. When completely installed, without damage either to conductors or structural system use maintain spacing or to keep cables in place when the tray is bent the minimum bend radius for cables as they exit the bottom of the cable tray.



What does a complete cable tray system include



What are the main components of a cable tray?

The main components of a cable tray system include tray sections, fittings, supports, and accessories. Together, these parts form a complete cable

Ultimate Guide to Cable Tray Selection - Types,

Learn how to choose the best cable tray system for your needs. Explore types, materials, installation tips, and NEC compliance in this expert guide.



IEC Standard for Cable Tray: Complete Technical Guide

IEC Standard for Cable Tray: Complete Technical Guide The International Electrotechnical Commission (IEC) provides detailed guidelines for

The Comprehensive Guide to Cable Tray Systems:

Master cable tray systems with our expert guide covering structural engineering, material



selection, and NEC compliance to ensure safe, efficient,

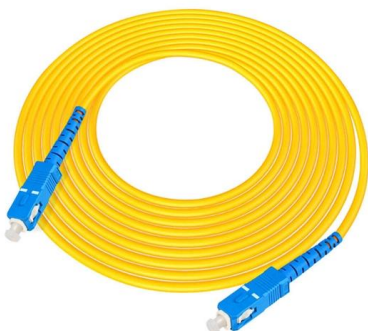


Cable Tray Systems: Requirements and Best Practices

This article explains the main requirements and good practices for cable tray systems, including tray types, materials, loading, supports, bonding, cable selection, and installation details.

Cable Tray Types and Sizes

What is Cable Tray Systems? An electrical cable tray is a type of containment system used to support insulated electrical cables for power distribution, control,



Cable Tray Technical Guide A practical guide to product selection and

Cable Tray Technical Guide A practical guide to product selection and installation This guide for engineers and installers has been developed by ABB as a practical reference regarding cable tray



FactSheet

FactSheet Electrical Safety Hazards of Overloading Cable Trays According to the 2005 National Electrical Code® (NEC), a cable tray system is " unit or assembly of units or sections and

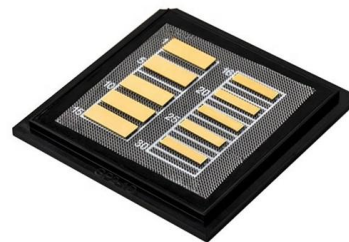


Cable Tray Technical Guide A practical guide to product selection and

A practical guide to product selection and installation This guide for engineers and installers has been developed by ABB as a practical reference regarding cable tray characteristics, installation, and

Introduction of Cable Tray System

What is a Cable Tray System? Per the National Electrical Code, a cable tray system is "a unit or assembly of units or sections and associated



Cable tray manual

INTRODUCTION The B-Line series Cable Tray Manual was produced by our technical staff. We recognize the need for a complete cable tray reference source for electrical engineers and designers.



Cable tray

In the electrical wiring of buildings, a cable tray system is used to support insulated electrical cables used for power distribution, control, and communication. Cable



Cable Tray Systems: A Complete Guide to Types

Discover the essential guide to cable tray systems. Learn about ladder, trough, and wire mesh types, key components, and expert installation tips

Cable Trays: The Essential Guide to Efficient Cable

Master cable tray installation and selection with this comprehensive guide. Discover types, benefits, and maintenance tips for efficient cable management in



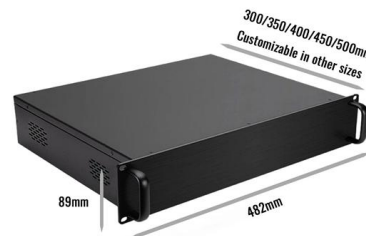


What are Cable Trays? Everything you need to know

Discover everything about cable trays in industrial settings: types, benefits, installation tips, and compliance with NEC and fire resistance standards.

Full cable tray systems specification document

The work covered under this section consists of the furnishing of all necessary labor, supervision, materials, equipment, tests and services to install complete cable tray systems as shown on the



Understanding cable trays

For raceways terminating at a tray, a listed cable tray clamp or adapter fastens the raceway to the cable tray system. Cable trays are available in a wide variety of

Cable Tray Technical Guide A practical guide to product selection and

Cable tray is considered to be a system. It must provide continuous support for cables, and the electrical continuity of the cable tray system must be maintained.



Selecting Cable Trays: A Complete Guide for Cable

Selecting cable trays can feel overwhelming, especially with so many options available. But don't worry--I've got you covered.

Understanding cable tray systems

Cable tray systems play an essential role in organizing and supporting cables, conduits, and wires. In this article, we'll explore the different types of cable tray systems, their advantages, and installation



What are the main components of a cable tray?

What Are the Main Components of a Cable Tray System? The main components of a cable tray system include tray sections, fittings, supports, and





What Is A Cable Tray? 5 Types Of Cable Trays

This article will explore the different types of cable trays, the materials used, and their benefits in a wide range of applications. Understanding these elements is key to optimizing both the performance and



Types of Cable Trays - Advantages, Applications and Sizes

Explore the types of cable trays, their advantages, applications, and standard sizes. Learn how they improve cable management and support various industries.

Cable Tray Types and Sizes

Designed to support and protect all types of wiring--including high-voltage power lines, control cables, telecommunication cables, and fiber optic cables --they



100+ Essential Questions Answered About Cable Trays:

Cable Tray Selection Principles 11. How do you choose the appropriate cable tray based on the usage environment? Choose the material,



Cable Tray Systems for Cable Management Systems

Discover the benefits & importance of cable tray management systems, safety & how they can help streamline your cable tray.



Cable Tray Systems Explained: The Right Solution for

In this guide, we explain what cable trays are, the main types available, how to choose the correct size and duty rating, and what to consider when designing a

Contact Us

For datasheets, pricing, or custom telecom energy solutions, please visit:
<https://koskolong.co.za>