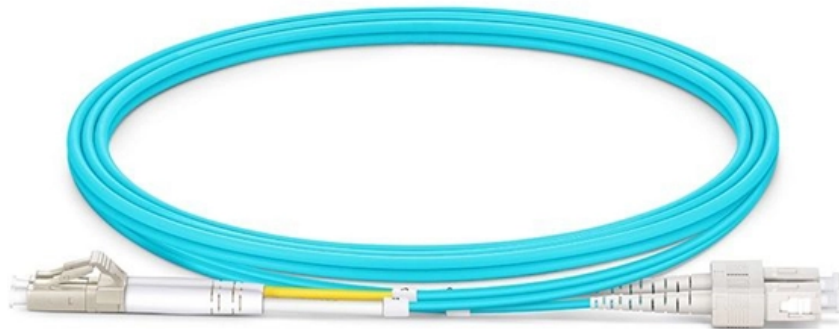




**Adam Tas Corridor Energy**

# **What does w mean in cable tray**





## What does w mean in cable tray

---



### LEGRAND CABLE TRAYS TECHNICAL GUIDE

In accordance with its continuous improvement policy, Legrand reserves the right to change the specifications and illustrations without notice. All illustrations, descriptions and technical information

### Cable Tray Technical Guide A practical guide to product selection and

Cable tray is considered to be a system. It must provide continuous support for cables, and the electrical continuity of the cable tray system must be maintained.



### Wire and Cable

This guide does not address wire and cable evaluated only for suitability as factory-installed component wiring in other Listed equipment. Those products are Recognized by UL under

### Cable Trays & Baskets , Electrical Cable Tray Solutions

Cable Trays & Baskets Electrical trays and cable baskets offer a secure open option for cable and



wire routing. Cable electrical trays are a track that allows cables and wires to be routed throughout a

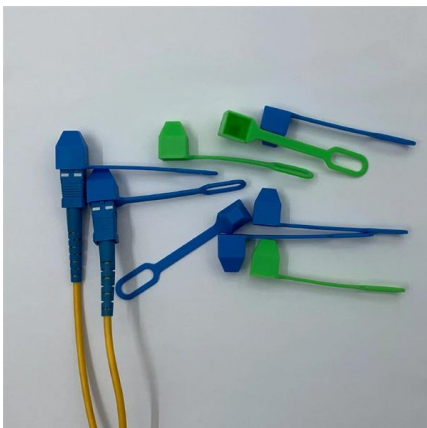


### **B-Line series Cable Tray Design Considerations**

Cable tray must be capable of supporting not just the weight of the cable, but also the weight of any equipment or materials attached to the cable tray. Additionally, dynamic environmental elements

### **SWIFTS CABLE TRAY**

Swifts cable tray and ladder ranges have been designed and manufactured in Scarborough (UK) since the 1960's. Our inhouse galvanising facility and strict quality control guidelines ensure that every



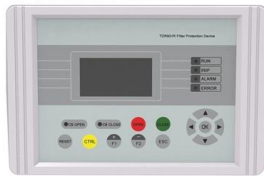
### **Tray Cable Applications & Selection Guide , TC, TC-ER, VNTC, EPR**

Tray cable is a multi-conductor or multi-pair power, control, or instrumentation cable approved for installation in cable trays without additional conduit. It is the standard wiring method for industrial



## GUIDE CABLE TRAYS TECHNICAL

NEMA VE 1-2017 Specifies requirements for metal cable trays and associated fittings designed for use in accordance with the rules of Canadian Electrical Code, Part I and the National Electrical Code®



## What Does W X Y And Z Mean In Electrical?

Therefore, X and Y labels always confuse them because they don't know what these markings mean. Fortunately, anyone that understands color codes and electrical

## Type W Cable under Ship Deck

As long as the conductors are run together, the material the tray is made from doesn't matter. Neither does it matter if the conductors are run near or parallel to any steel, as long as they're



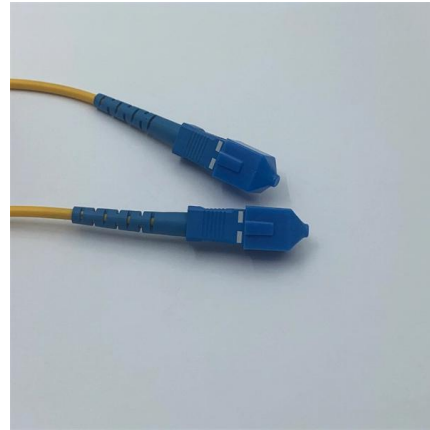
## Type W Cable Specs and Applications

Cable Structure, Insulation, Splicing and Harnesses Find answers to all of your specific questions related to cable structure. See cable management



## B-Line series Cable Tray Design Considerations

Is your cable tray system optimized for safety, dependability, space and cost savings? Cable tray (or cable ladder) systems are a popular alternative to electrical conduit systems, as they have an



## Cable Tray Manual: Based On The 2005 National

Increasing the cable tray side rail depth increases the strength of the cable tray but the greater side rail depth does not permit an increase in cable fill area for power

## IEEE 525-2007\_accepted

IEEE-SA Standards Board Abstract: The design, installation, and protection of wire and cable systems in substations are covered in this guide, with the objective of minimizing cable failures and their





## Cable Tray Design and Sizing Guide

The document discusses several key factors to consider when designing a cable tray system, including: 1) The width and height of the tray, type of tray bottom (ladder, ventilated, or solid), and type of

## LEGRAND CABLE TRAYS TECHNICAL GUIDE

Not all cable trays are equivalent. The mechanical and electrical characteristics, tests, certifications, overall quality management, recommendations mentioned in this technical guide only apply to our



## CATALOG Cable Tray Cable tray systems

Unlike the conduit system, the cable tray system allows the installer to pull tray cables from one termination enclosure to the next before insertion and termination.

## Best Practice Guide to Cable Ladder and Cable Tray Systems

Any vertically orientated component, whether cable ladder, cable tray or support, acts structurally as a column; it is not usual to consider cable ladder or cable tray in this way because they are not



### Understanding the "CT" Marks on single conductors for

Encore Wire's thermoplastic and/or thermoset single conductors and their subsequent ratings for Cable Tray "CT" use in sizes 1/0 and Larger. The



### CABLE TRAY SYSTEMS GUIDE

Cable Tray Systems Guide HUBBELL Hubbell Wiring Device-Kellems and Hubbell Premise Wiring are divisions of Hubbell Incorporated, a U.S. headquartered manufacturer with over 130 years of



### Cable Tray Explained

Gutter Trays: Gutter trays are designed to support cables along walls or ceilings, often used for smaller cable bundles.





## Type W Cable

Find out about the applications of both single-conductor and multi-conductor Type W Cable with Allied Wire & Cable's extensive guide.

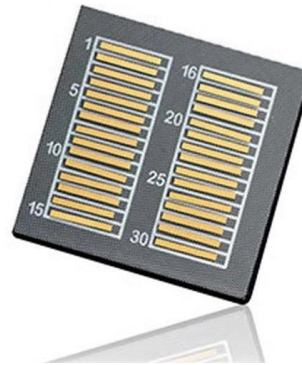


## AF\_UnifiedCat\_Interior\_PRINT.pdf

Cable tray, introduced in the mid 1940's, has proved to be a very efficient cable management solution. It provides system flexibility and expandability with substantial savings in installation labor and material

## Ampacities of Cables Installed in Cable Trays

Scope d dielectric cables installed in cable trays. Ampacity ratings are tabulated for single conductor cables, triplexed assemblies of single conductor cables, and three-con s normally



## LEGRAND CABLE TRAYS TECHNICAL GUIDE

In accordance with its continuous improve-ment policy, Legrand reserves the right to change the specifications and illustrations without notice. All illustrations, descrip-tions and technical information



## Contact Us

---

For datasheets, pricing, or custom telecom energy solutions, please visit:  
<https://koskolong.co.za>