



**Adam Tas Corridor Energy**

# **What is a 25G optical module used for**





## What is a 25G optical module used for

---



### **25G Multimode Optical Module: SFP-25G-SR and SFP-25G-ESR**

25G multimode optical modules are mainly used for short-distance data transmission, with high transmission rate and cost performance.

### **SFP Optical Module 1.25G Single Optical Fiber 20km**

This is a standard SFP optical module. It uses a single mode optical fiber and the speed rate can up to 1.25Gbps, transmission distance up to 20 km.



### **Haile SFP-GE40-SM1310-A 1.25G Gigabit Single Fiber Optical Module**

Product Overview The Haile SFP-GE40-SM1310-A is a high-performance Gigabit single-mode single fiber optical module designed for reliable long-distance data transmission. Operating at 1.25Gbps,

### **OM1 vs OM2 vs OM3 vs OM4 vs OM5 Multimode Fiber**

Compare OM1, OM2, OM3, OM4, and OM5 multimode fiber specs, distances, bandwidth,



and applications. Essential guide for data center fiber



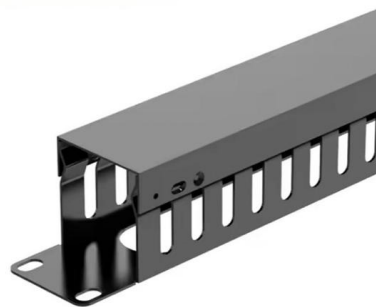
### SFP28 25G SR Optical Modules: High-Performance Network Solution

The SFP28 25G SR optical module, a core component of 25G Ethernet, offers high performance, low power consumption, and high port density. It is widely used in data centers, enterprise networks, and



### SFP+ vs SFP28: What Is the Difference Between 10G and 25G Optics?

As network traffic continues to grow, many organisations are looking beyond traditional 10G connectivity and considering whether 25G is the right next step. That often leads to one of the most



### What Is Inside an SFP Transceiver? How Optical Modules Work in

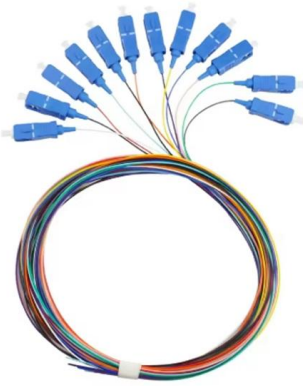
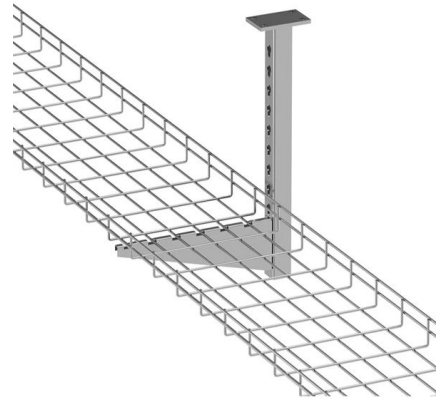
But what exactly happens inside an SFP transceiver? Understanding how these modules work can help network engineers and IT buyers make better decisions when selecting, deploying, or





## SFP vs QSFP: Which Module Does Your Switch Need? (2025 Guide)

What these form-factors actually do (in plain language) SFP (Small Form-factor Pluggable) is a single-lane transceiver. Historically people used SFP for 1G and SFP+ for 10G; SFP28 handles 25G per



## Everything You Need to Know about 25G Optics

The 25G SFP28 optical module is an optical module with a transmission rate of 25Gbps. It is a new Ethernet standard with many

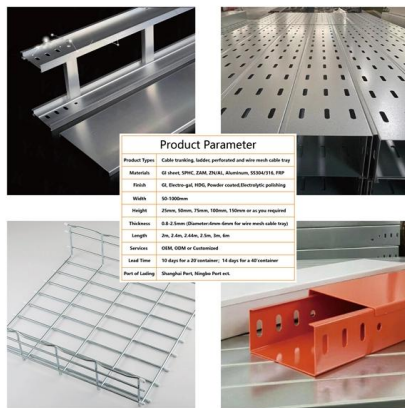
## Optical Transceiver: SFP vs SFP+ vs QSFP28 vs QSFP-DD

This article provides a comprehensive comparison of mainstream optical transceivers, including SFP, SFP+, QSFP+, QSFP28, and QSFP-DD. It explains their technical differences,



## Optical Module & Cable Manufacturing Company

Lanbras manufactures types of Optical Module & Cable: 400g/200g Module, 100g/40g/25g/10g Module, 6g/2.5g/1g/155m Module, Adapter Converter Module, DAC/AOC Cable and GPON Stick/PON Module.



## Demystifying SFP28: The Essential Guide to 25G

SFP28 is a 25G transceiver module for fast, efficient data transfer in modern networks, offering high speed, compatibility, and energy savings.



## Introduction to 400G Optical Modules - KAD

A 400G optical module performs photoelectric conversion: Electrical -> Optical at the transmitter Optical -> Electrical at the receiver With a 400 Gbps

## Cisco 25GBASE SFP28 Modules Data Sheet

The Cisco 25GBASE-ER Module supports a link length of 40 kilometers on standard Single-Mode Fiber (SMF) G.652 at 25G. The module





## QSFP28 Transceiver: Complete 100G Connectivity Guide (2026)

QSFP28 transceiver guide covering module types, pricing, compatibility, and deployment. Learn how to choose, deploy, and troubleshoot 100G QSFP28 optics.

## The Ultimate Guide to Optical Transceivers: Types, Features & Selection

Master the world of optical modules. Learn how transceivers work, compare SFP vs QSFP, and discover engineering tips for troubleshooting and selection.



## GPON OLT Stick, SFP Optical Module for POL Fiber

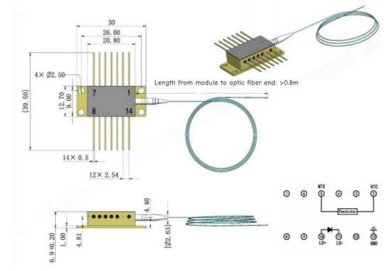
GPON OLT Stick - The Easy Way to Build a Fiber Network The GPON OLT Stick is a revolutionary solution designed to simplify the deployment of a Passive Optical

## SFP+ vs SFP28: What Is the Difference Between 10G and 25G Optics?

At a glance, the two module types look very similar. Both are compact, hot-pluggable optical transceivers designed for single-lane connections, and both are widely used in modern



Outline drawings  
mm



## What is QSFP28? Guide to 100G Ethernet , NetAlly

These modules use multimode fiber and parallel optics to prioritize density and cost-efficiency. Long-Range Campus Interconnects - For distances measured in kilometers, single-mode

## Wholesale Optical Transceivers Module , 100G

Shop high-speed optical transceivers from Unitekfiber. We offer 100% compatible 40G, 100G, and 400G QSFP-DD modules for data centers. Expert technical



## Optical Transceiver Module

Fiber optic module manufacturer, ETU-Link supply full model optical transceivers, including standard 8g/10g/25g/40g/100g sfp+ optical modules and



## Selecting the Perfect 100G Optical Module Packaging:

100G optical module have emerged as essential components in the fast-paced world of data centers and network communications,. With a plethora of



## AOC, DAC, ACC, AEC Modules: The most Complete

Understand AOC, DAC, ACC & AEC modules in one guide. Compare features, benefits & best use cases to choose the right cable for your data center.

## What is a 25G optical module chip? , Weyland

25G Optical Modules play a critical role in high-speed interconnects for data centers, enterprise networks, and telecom networks. They provide a single-lane data rate of 25Gbps, forming the



## What Is an SFP Module? (Comprehensive Guide Including Fiber Optic

Single-mode optical modules: Matched with single-mode fibers, with a core diameter of 9mm, excellent transmission performance, supporting long-distance transmission, used in scenarios such as



## Understanding 5G Communication Optical Transceivers:

Explore the role of optical modules in 5G communication, including their types, features, and deployment in fronthaul, midhaul, and backhaul networks.



## What is an SFP28 Transceiver? 25G SFP28 Explained

A 25G SFP28 transceiver is a compact, hot-pluggable optical or copper networking module designed to support 25 Gigabit Ethernet over a single lane.

## An In-depth Guide to 25G SFP28 Optical Transceiver

The 25G optical transceiver, particularly the 25G SFP28 optical transceiver module, represents a versatile, future-ready solution for scaling bandwidth in data centers,





LoRa handheld portable base station



## **SFP28 Explained: Why 25G is the Sweet Spot for Modern Networks**

The towers use fiber optics to connect back to the main network. This is called "fronthaul," and 25g sfp28 modules are the standard choice because they handle the high traffic of many phones at once.

## **Contact Us**

---

For datasheets, pricing, or custom telecom energy solutions, please visit:  
<https://koskolong.co.za>