



Adam Tas Corridor Energy

What is a CJAP electrical distribution box





Overview

Most residential and commercial electrical systems have at least one distribution box. A distribution box is a device that, as the name suggests, is designed to distribute electrical power.



What is a CJAP electrical distribution box

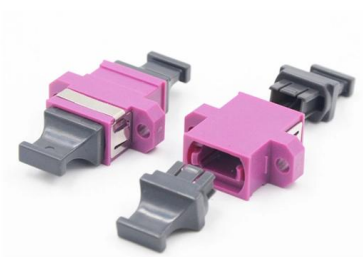
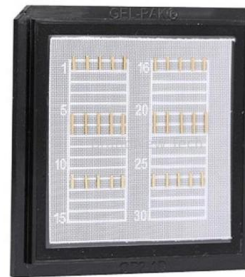


What is an Electrical Distribution Box? A

What is an Electrical Distribution Box? At its core, an electrical distribution box (or distribution board) is a metal or plastic enclosure that houses

Power Distribution Boxes Explained Simply

Discover the essentials of a Power Distribution Box--how it works, key types, benefits, and tips to ensure safe, efficient electrical power management.



Understanding Distribution Boxes: A Comprehensive Guide

A distribution box, also known as a power distribution box or electrical distribution box, is used to distribute electrical power safely to multiple

Distribution Box vs Control Box vs Junction Box: Key

Learn the differences between distribution boxes, control boxes, and junction boxes.



Discover their functions, applications, and how E-abel provides

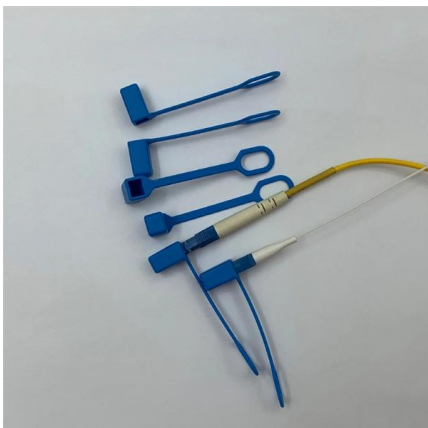


The Ultimate Guide to Distribution Box Types

Discover the key types of distribution boxes with NUOMAK's comprehensive guide. Learn about Main Distribution Boards (MDB), Consumer Units, Transfer

Electrical Distribution Box: Complete Panel Types Guide 2025

Learn what an electrical distribution box is in simple terms. Complete guide to panel types, NEC 408 requirements, and applications for home and commercial use.



Understanding Distribution Boxes: A Comprehensive Guide

Understanding its significance, this article covers what a distribution box is, how it functions, its structure, the various types available, and how it



What is a Distribution Box? - A Comprehensive Guide

A distribution box organizes and controls power flow, ensuring safety and efficiency in electrical systems.

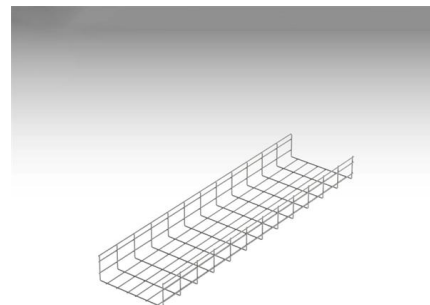


Distribution Box vs Control Box vs Junction Box: Key Differences and

Learn the differences between distribution boxes, control boxes, and junction boxes. Discover their functions, applications, and how E-abel provides customized electrical enclosure

What Is an Electrical Distribution Box? A

Distribution boxes serve a critical role in the safe distribution of electrical power across various circuits within residential, commercial, and



Grid Cable for marine and offshore applications

Understanding Distribution Boxes: Your Guide to Power

Distribution boxes, or electrical junction boxes as they are sometimes called, play a vital role in electrical systems. They act as the central location



Electrical Control Panels & Distribution Boxes: Sizes, Types, and

This guide explores control panels, electrical boxes, breaker panels, bus bars, junction boxes, and custom enclosures to help you understand their sizes, types, and common applications.



Power Distribution Box Essentials: Functions, Types

We all know that electricity is the backbone of modern life. However, the problem may occur in its management. But there's a solution for every

Electrical Control Panels & Distribution Boxes: Sizes,

This guide explores control panels, electrical boxes, breaker panels, bus bars, junction boxes, and custom enclosures to help you understand their





What is a Distribution Box? - A Comprehensive Guide

A electrical distribution box is essential for managing and controlling electrical power flow in any system, preventing overloads and short circuits,

Cable Junction Boxes: 8 Types, Tech Specs & Installation

By: Thor, Senior Electrical Engineer at Weisho Electric Co., Ltd. Thor specializes in R& D and overseas technical support for high



Distribution Boxes Explained: Types, Functions, and

Learn about distribution boxes, their types, functions, and safety features to ensure efficient and secure electrical power distribution in any building.

What Is an Electrical Distribution Box? A Complete Guide

An electrical distribution box is a centralized unit responsible for distributing electrical power across multiple circuits within various environments, including residential,





Difference Between a Distribution Box and a Junction Box: An In

Discover the key difference between a distribution box and a junction box, including their functions, structure, and ideal applications.

The Ultimate Guide to Distribution Box Types

A Consumer Unit, also known as a fuse board or breaker box, is the standard distribution box used in residential and small commercial buildings. Function: It



What is an Electrical Distribution Box? A Comprehensive Guide

What is an Electrical Distribution Box? At its core, an electrical distribution box (or distribution board) is a metal or plastic enclosure that houses various components responsible for

What Is an Electrical Distribution Box? A Complete Guide

Distribution boxes serve a critical role in the safe distribution of electrical power across various circuits within residential, commercial, and



What is a Junction Box (or jbox)? , Electrical Knowledge

A junction box - also known as an ' electrical box ', ' jbox ', 'or' terminal box ' - is a protective box where wires are interconnected. Junction

Complete Guide For Distribution Boxes Types

Distribution boxes, also known as junction boxes, electrical boxes, or panelboards, are essential components in electrical distribution systems. They serve as



Reuters , Breaking International News & Views

Find latest news from every corner of the globe at Reuters , your online source for breaking international news coverage.



Complete Guide For Distribution Boxes Types

Distribution boxes, also known as electrical distribution boards or panels, are pivotal components in electrical systems, ensuring the safe and organized distribution of



What Is a Distribution Box?

Also known as a distribution board, it's responsible for distributing the electrical power throughout the home or building with which it's used. To learn

Distribution Boxes: Types and Functions

Learn what an electrical distribution box (DB/distribution board) is, its main components (MCB/RCCB/RCBO, SPD, busbar) and common types.



Electrical Control Panels & Distribution Boxes: Sizes,

Introduction Electrical control panels and distribution boxes are the backbone of modern electrical systems. From powering homes and industrial



Three Phase Distribution Box Functions and

A three phase distribution box safely distributes and protects power for large equipment in factories, buildings, and high-demand commercial settings.



Contact Us

For datasheets, pricing, or custom telecom energy solutions, please visit:
<https://koskolong.co.za>