



Adam Tas Corridor Energy

What is a hot aisle in a computer room





Overview

The hot aisle /cold aisle data center layout was originated by IBM in 1992 and it is one of the oldest ways to save energy in the data center. Assuming a computer room is configured in such a way that either is an option, hot aisle containment may be seen as the better option because it has some thermal efficiency and ride-through advantages. However, because every computer room is unique, there is no one definitive solution. The HAC system directs the upward airflow to an AC return system such as a drop-ceiling void. The system simply aligns server fronts (air intakes) toward a shared cold aisle, and backs (exhausts) toward a shared hot aisle. Cold Aisle: Rows of racks face each other, forming a corridor where cool air is directed.



What is a hot aisle in a computer room



What is the Purpose of a Hot Aisle & Cold Aisle

The segmentation of data centers and server rooms into alternating cold and hot aisles has been embraced globally over recent years. The cold and hot aisle

Data Centre Cooling: Hot Aisle and Cold Aisle Design

The hot aisle/cold aisle configuration ensures a consistent supply of cool air, reducing the likelihood of equipment failures due to overheating. Better airflow



Cold and hot aisle construction in computer room

Cabinet layout in the computer room (1) The cabinets are arranged face to face to form a cold aisle, and the air outlet is on the floor of the cabinet face.



Data Center Design: Hot Aisle & Cold Aisle - Length

Efficient airflow management in data centers relies heavily on proper Hot Aisle and Cold Aisle



configurations. To maintain thermal performance, equipment

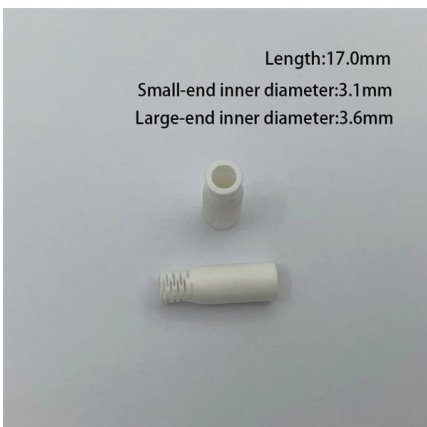


Hot Aisle Containment vs. Cold Aisle Containment:

Implementation of both hot and cold aisle containment does not reduce the volumetric flow rate of bypass airflow in a computer room. When cold

The pros and cons of hot and cold aisle containment

With data centres and computer server rooms becoming larger and more numerous companies are often faced with a decision: what is most suitable for their



Hot Aisle Containment Explained

When it can be implemented at a reasonable cost, hot aisle containment is the preferred data center containment design. Containment is as



Hot Aisle / Cold Aisle Cooling Explained

The hot aisle / cold aisle configuration conserves energy and lowers cooling costs by managing air flow. This is common practice in every data centre and may seem obvious to most



What is a Hot/Cold Aisle in CRAC?

Computer Room Air Conditioning: Chapter 2 Hot and Cold Aisles In this module, we will look into hot and cold aisles in computer room air

Hot Aisle Containment: The Coolest Guide for 2025

Hot aisle containment data centers are engineered to optimize cooling efficiency and minimize energy use by effectively separating hot and cold air. By



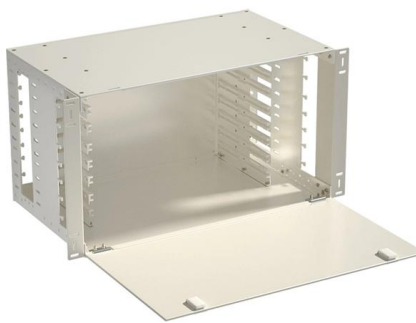
Hot Aisle vs Cold Aisle Containment Explained (Data Center Cooling)

Hot aisle and cold aisle containment are foundational concepts in data center design. When implemented correctly, they improve efficiency, reduce energy consumption, extend



Hot Aisle vs Cold Aisle in Data Centers: Technical

What Are Hot Aisle / Cold Aisle Configurations?
Data centers are ovens if left unmanaged. Hundreds, sometimes thousands of servers pump out



Hot vs Cold Aisle Containment: 40% Cooling Savings

If data centers were action movies, hot and cold aisle containment would be the unsung heroes, saving the day without getting the glory. While

Pre-Terminated Patch Panel

- Multi-application support
- Flexible configuration
- Modular design



Multi-functional Sliding Patch Box, Modular



Modular Sliding Patch Box

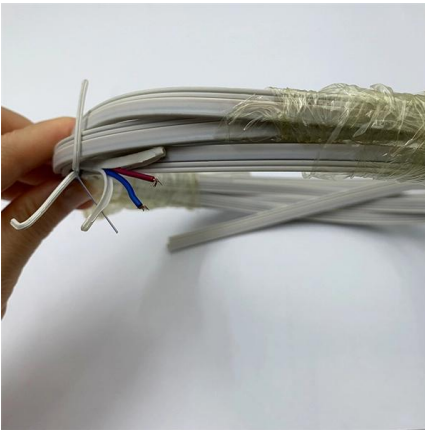


Sliding Patch Box, Modular

Move to a Hot Aisle/Cold Aisle Layout

A Time-tested Technique The hot aisle /cold aisle data center layout was originated by IBM in 1992 and it is one of the oldest ways to save energy in the data center.



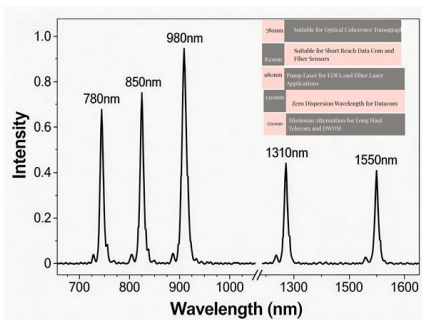


Hot vs. Cold Aisle Containment: What's Better?

Unlike cold aisle contaminants, hot aisles are more forgiving for racks and equipment that live outside the containment architecture, due to the lower temperature

A Guide to Hot and Cold Aisle Containment for Optimizing Server

Hot Aisles: These aisles are created where the backs of the server racks face each other. Hot air exhausted from the servers is directed into these aisles and is then removed from the room, usually



Hot vs. Cold H

Hot aisle or cold aisle containment is a layout design for server racks and other computing data center. The aisle/cold aisle containment configuration is to conserve energy and lower cooling costs by

Explore hot and cold aisle containment for your data center

Hot and cold aisle containment can help you maintain the best air flow, temperature and humidity in the data center to keep servers running efficiently.



Data Center Hot Aisle/Cold Aisle Layout Design

Data Center Hot Aisle/Cold Aisle Layout Design
Looking for ways to keep your Data Center Server Room cool? Consider the hot aisle/cold aisle

What To Know About Hot-Aisle, Cold-Aisle, And Chimney

The concept of containment began with the introduction of hot-aisle, cold-aisle arrangements and the standardization of computer server design to a front-to-back airflow



- IP65/IP55 OUTDOOR CABINET
- OUTDOOR MODULE CABINET
- OUTDOOR 5G BASE STATION CABINET
- WATERPROOF

Hot Aisle Containment vs. Cold Aisle Containment:

With hot aisle containment, the excess volume of conditioned air delivered to the space is typically not pushed through IT equipment but enters the



Hot Aisle Containment in Data Centers , Subzero

Hot aisle containment in data centers can double the cooling capacity & increase data center efficiency by 30% or more. Learn more here!



Data Center Hot and Cold Aisle: A Quick Guide

A data center hot and cold aisle is a strategic layout for organizing server racks to manage airflow and enhance cooling efficiency.

What are hot and cold aisles in the data center?

Using hot and cold aisles in a data center is part of an energy

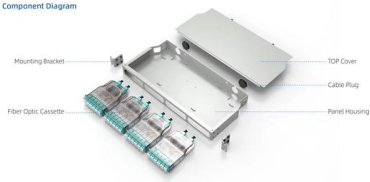


Hot and Cold Aisle Containment: What You Need to

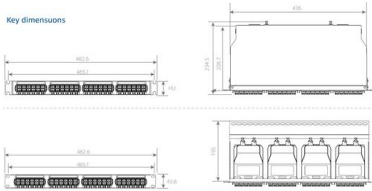
Aisle containment is a physical means of separating hot (exhaust) and cold (supply) air. It can be accomplished via thoughtful room design, cabinet



Component Diagram



Key dimensions



Hot Aisle Containment Explained

Once the hot air is contained and isolated, it is either exhausted from the data center, or returned to the data center's Computer Room Air Conditioning



The Advantages And Disadvantages Of Hot-Aisle, Cold

But there are some disadvantages to cold-aisle containment. Allowing the discharge air from the hot aisle to fill the room results in temperatures

Data Centre Cooling: Hot Aisle and Cold Aisle Design

Hot Aisle: The hot aisle is located adjacent to the cold aisle. In this aisle, the backs of server racks face each other. Hot air generated by the servers in the cold aisle is





Hot and Cold Aisle Containment: What You Need to Know

Hot aisle containment systems isolate the hot aisle using a similar enclosure system to that of a cold aisle with a sealed door for access. This

Aisle Containment

Open Aisle Containment Traditional open aisle data centres use perimeter PAC (precision air conditioning) or CRAC (computer room air conditioning) units to



Contact Us

For datasheets, pricing, or custom telecom energy solutions, please visit:
<https://koskolong.co.za>