



What is a normal network speed for a standalone switch





Overview

They mostly are of configurations such as 10/100 for small networks, 1 Gbps for normal corporate use, and up to 10/40/100 in data centers and large enterprise networks. In the realm of network switches, bandwidth refers to two distinct concepts: Port Bandwidth: This is the physical speed of a network interface, such as 1G, 2. In brief, for switches, line-rate or wire-speed basically means the device has the forwarding (PPS) capacity to support all ports, concurrently, at 100% capacity (even at minimum packet sizes). It is typically measured in megabits per second (Mbps) or gigabits per second (Gbps) and serves as a critical determinant of a network's performance. In this article, the seven main performance metrics will be examined in depth, exploring their calculations in the.



What is a normal network speed for a standalone switch

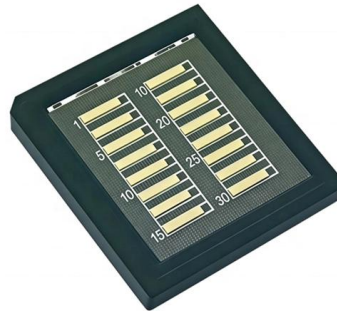


Understanding the Best Network Switch Speeds: A

This guide aims to cover as much as possible the definition of network switch speed, starting from the most basic features to more complicated aspects,

Does A Network Switch Slow Down Speed? Learn The Truth

Discover how network switches impact speed, reduce lag, and boost performance. Find out if they can increase speed, their lifespan, and



What Determines the Transfer Speed on My Home

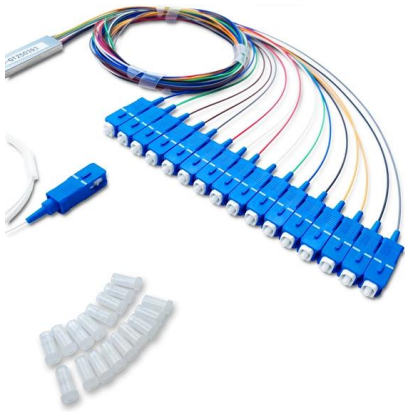
That will be the maximum speed that you can achieve on any network. Question: If I have 10/100 router and a gigabit switch and gigabit computers (four

networking

Switches have a limit of how much traffic the backplane can handle. It is usually lower than the theoretical combined bandwidth (which is the



speed of a single port x 2 [full-duplex] x the number of



How To Analyze Network Switch Performance: 7 Key

Learn how to analyze network switch performance with 7 key metrics. Compare throughput, latency, packet loss & more to choose the right switch for

Optus and Ericsson hit 3.4Gbps on a live 5G standalone network

Optus and Ericsson recorded 3.4Gbps downlink speeds on a live 5G standalone network in Sydney using four-component carrier aggregation.



Switch Capacity vs Forwarding Rate vs Bandwidth

Explore the critical distinctions between switching capacity, forwarding rate, and bandwidth in network switches. Understand how they impact your network.



What is a network switch and how does it work?

Switches connect network segments, providing full-duplex communication, valuable network performance data and efficient use of network bandwidth.

PRODUCT CATEGORY				
Open rack Series	Speed Entry rack	10U Server Open rack	1U Desktop Wall rack	Adjustable Depth Open rack
Wall mount rack Series	Glass door Wall mount rack	Mesh door Wall mount rack	Double section Wall mount rack	Economic door Wall mount rack
Floor standing server rack	Glass door with casters	Mesh door with casters	43U Standard Server rack	Double section Server rack
Outdoor cabinet	A/C conditioner Outdoor cabinet	Outdoor cabinet with panel	Outdoor cabinet with fan cooling	Double Wall Outdoor cabinet
Splitter series	Bare Fiber Splitters	Blackless Fiber Splitters	ABS Splitter	Portlet Splitters
Splitter series	LCR Splitters	Bank Mount Splitters	Mini Plug-in Type Splitter	Tray Splitters
Patch cord series	ST	SC	FC	LC
FTTH product series				

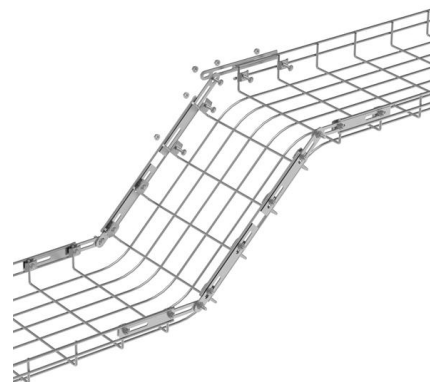


Nagaland News, India News, Northeast News

The Morung Express brings the Latest News, Top Breaking headlines on Politics and Current Affairs in Nagaland India and around the World, Nagaland News, Naga

What Are The Different Speeds For Network Switches?

These include (1) Fast Ethernet switches (FS) - 10/100 Mbps (standard IEEE 802.3u), (2) Gigabit network switches (GS or JGS) - 10/100/1000 Mbps (standard IEEE 802.3-2008) and (3) Ten-gigabit



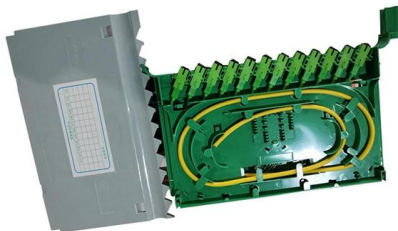
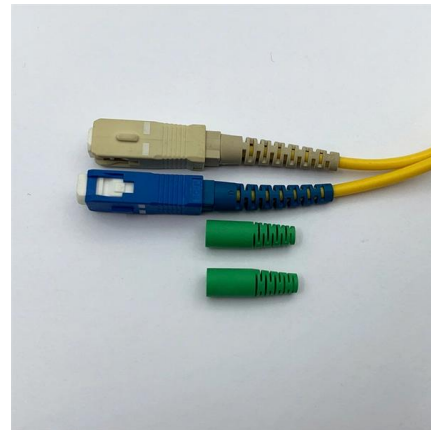
Different Types of Switches in Networking

Understand the different types of switches in networking available today so you can make the right choices to benefit your small business.



What Is a Switch? Computer Networking

A network switch is a central communication device for local area Ethernet networks. Many home broadband routers feature an embedded Ethernet



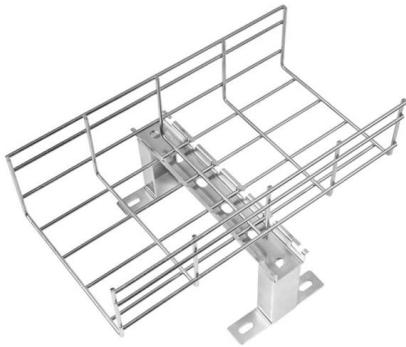
Fast Ethernet vs. Gigabit: Which network switch should I

Fast Ethernet switches are ideal for home or small business use where speed demands are relatively low. If you have higher speed demands for

What does the speed of Network Switch actually mean?

It is not usual for a PC to be transmitting at full speed for an extended period of time, although that may be true for a server. Oversubscription usually





What does the speed of Network Switch actually mean?

1 Network switches usually come in speeds of 10/100/1000 Mbps, and that's all fine and dandy, then I got thinking.. Suppose I have an 8 port 1000 Mbps

What Is The Speed Of A Network Switch

Discover the factors that determine the speed of a network switch and how it impacts your network performance. Learn



Switch performance, line rate vs non blocking vs wire speed

In brief, for switches, line-rate or wire-speed basically means the device has the forwarding (PPS) capacity to support all ports, concurrently, at 100% capacity (even at minimum

How do switches effect network speed? : r/HomeNetworking

Most switches are 1Gbps. So each port is capped at 1Gbps. Switches will have a much higher backplan capacity, well over 1Gbps. This is a number buried in the specs. So if you have an 8 port switch with



What Defines Switch Performance? Can Line Rate and Wire Speed

Terms like line rate, wire speed, and non-blocking are often tossed around in product specs, but they represent fundamentally different aspects of performance that can make or

Network Speed and Switch

If the network speed is limited by the slowest device is there any way around this problem? If i have a central 24 port gigabit switch and connect an 8 port gigabit switch to it with 8



Does the switch share speed? Understanding network

Optimize network performance with network switches In summary, whether a switch shares speed depends on various factors, including the type of network switch, its



Types of Network Switches You Need to Know , CXtec Blog

Read our walkthrough of the different types of network switches so you can decide which is right for your network while building an efficient network infrastructure.



What Defines Switch Performance? Can Line Rate and Wire Speed

When you're evaluating network switches for your business infrastructure, it's easy to get lost in a sea of technical jargon. Terms like line rate, wire speed, and non-blocking are often tossed around in

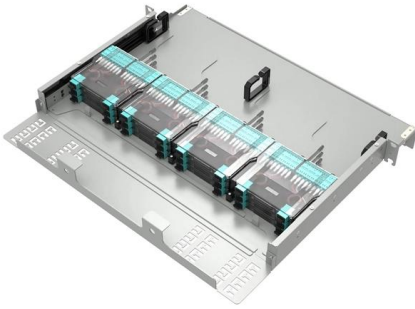
How to Improve Network Speed with a LAN Switch

How to improve network speed by avoiding congestion and reducing collisions. Two experts share tips on segmenting, increasing capacity, VLAN routing, and more.



How To Find Your Network Switch Port Speed Settings

Learn how to easily find and adjust your network switch port speed settings from your PC. Discover step-by-step instructions and tips for optimizing



Understanding the different types of Ethernet Switches

As the network grows, you will need more switches to provide network connectivity to the growing number of devices in the network. When using Standalone switches, each switch is



ITPro Today, Network Computing, IoT World Today combine

ITPro Today, Network Computing and IoT World Today have combined with TechTarget . The page you are looking for may no longer exist.



Best Network Switches: Add Ports, Speed to Your

We tested several network switches to help find the right one for your needs and budget.





Contact Us

For datasheets, pricing, or custom telecom energy solutions, please visit:
<https://koskolong.co.za>