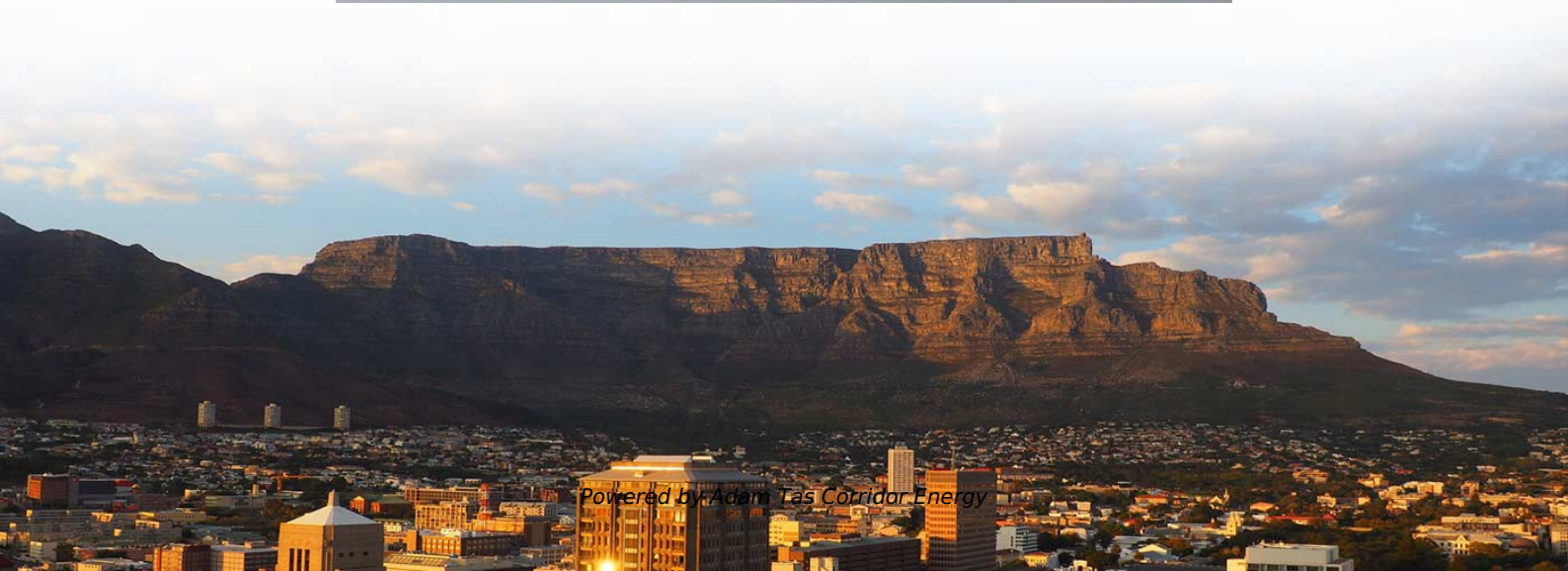
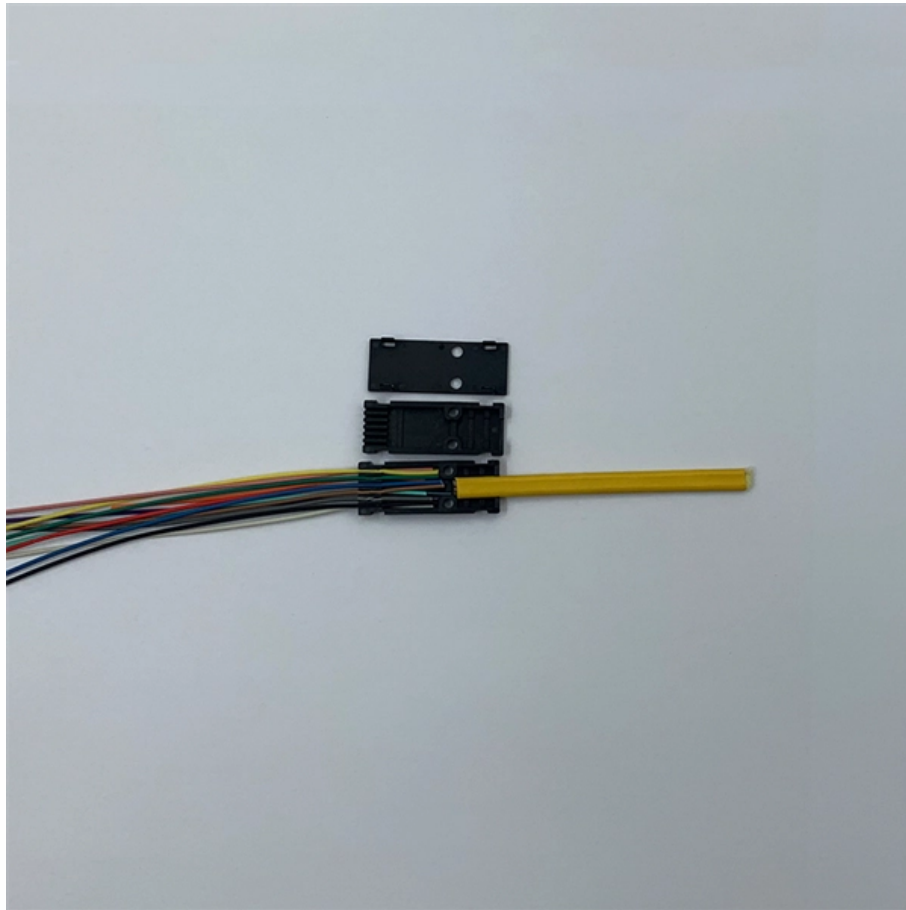




Adam Tas Corridor Energy

What is a power distribution automation terminal





Overview

This distribution automation terminal is designed for power engineering applications. The terminal monitors, controls, and automates processes within a power distribution network. Distribution Automation Terminals (DTU and FTU) by Application (Substation, Pole Mounted Switch, Distribution Transformer, Others), by Types (Distribution Terminal Unit (DTU), Feeder Terminal Unit (FTU)), by North America (United States, Canada, Mexico), by South America (Brazil, Argentina, Rest of. , MQTT, IEC101, Modbus) for wired input and transmits data to remote locations via wired or wireless.



What is a power distribution automation terminal



Optimized Allocation of Distribution Automation Terminals based on

With the continuous improvement of power grid technology in China, the operation state stability of the distribution network has attracted more attention. The rational configuration of the distribution

Intelligent acceptance systems for distribution automation terminals

The investigation into intelligent acceptance systems for distribution automation terminals has spanned over a decade, furnishing indispensable assistance to the power industry. The



Introduction to SCADA Systems in Power Distribution:

Explore how SCADA systems enable real-time monitoring and automation in power distribution. Discover the role of RTUs, MTUs, and

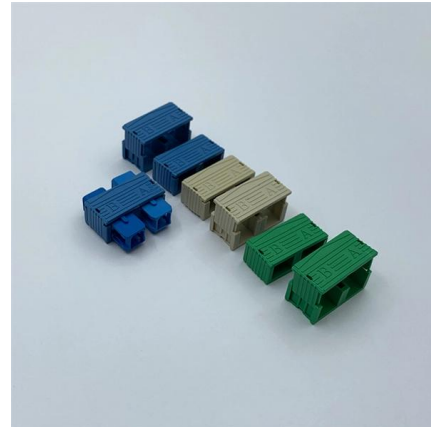


Distribution automation fundamentals , Eaton

Distribution automation is how electric utilities utilize forward-looking hardware and software



tools to optimize power grid efficiency, productivity and reliability. Examples of distribution automation tools



Remote Terminal Units for Distribution Automation

This paper describes indigenous design, development, and commissioning of Remote Terminal Units (RTUs) for computer-aided monitoring and control of 10 MVA power distribution



The essentials of automation applied to distribution

1. Distribution system automation To what extent is it possible to decide the capability of automation applied to the distribution systems? It



Optimal configuration model of distribution network automation terminal

The installation of distribution automation terminal can significantly improve the power supply reliability of the distribution network. In the current research, the candidate position of automation terminal is





Study on the Distribution Automation System Terminal Automatic Test

With the widespread use of DAS, higher requirements for distribution automation terminal on-site testing have been put forward on account of limitations of field working conditions. Based on



(PDF) Research on Application of Distribution Automation Terminal

Distribution automation is an important part of the construction of a strong smart grid. It is a key means to further improve the quality of power supply and improve the reliability of power supply.

What Is A Distribution Automation Terminal?

The distribution automation terminal is the execution unit of the distribution automation system and an important part of the distribution automation system. It mainly monitors and controls



Understanding RTU (Remote Terminal Unit) in Industrial

The Remote Terminal Unit (RTU) serves applications throughout the power distribution sector as well as oil and gas industries and water treatment



Distribution Automation , Introduction, Benefits, and

What is Distribution Automation? Distribution automation (DA) uses technologies like sensors, processors, and communication networks to improve the efficiency of



Feeder & Distribution Automation (FTU / DTU / TTU)

It helps map real grid scenarios into a robust architecture, a realistic checklist and brand-ready component selections. Feeder and distribution automation terminals



Design of Distribution Automation System and Terminal

Distribution automation system conforms to the requirement of national distribution network automation development, which is an important means of the monitoring and fault treatment



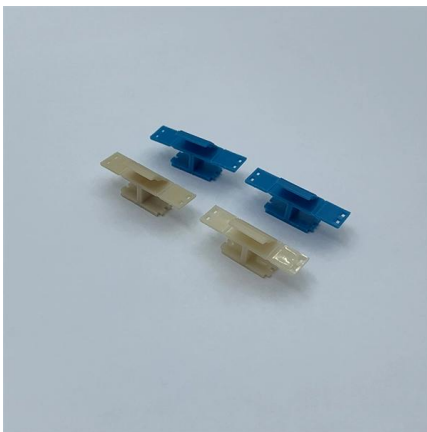


Power Distribution Automation Terminal , Merhein

The Power Distribution Automation Terminal is a ruggedized solution engineered for critical power distribution network applications. Designed to withstand harsh environments, this unit enables

(PDF) Research on Application of Distribution Automation Terminal

This paper discusses the composition of distribution automation terminal equipment and analyses its application in power distribution network.



Deep Dive into Distribution Automation Terminals (DTU)

Discover the booming market for Distribution Automation Terminals (DTUs & FTUs)! This comprehensive analysis reveals key trends, growth drivers,

Distribution System Operation and Automation

This chapter looks at the history of distribution automation (DA) and several common operation functions and examines the impact of automation on these functions. Deregulation and



Differences Between DTU, FTU, TTU, and RTU

In practice, FTU often narrowly refers to automation terminals for switches, while distribution transformers are monitored by DTU or TTU. FTU combines control



Design and Implementation of Integrated Debugging and

Intelligent power distribution terminal has many functions and complicated steps in production and debugging. At present, manual debugging increases the workload in production,



Distribution Automation , Four-Faith Smart Power

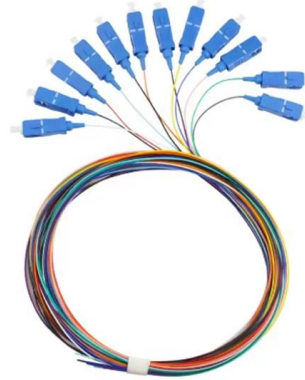
Distribution automation should aim at improving power supply reliability, improving power supply quality, improving grid operation efficiency and





Research and Application of Distribution Automation System

This paper centers on the mountainous distribution network automation strategy based on self-healing technology, analyzes the main components and functions of the distribution automation

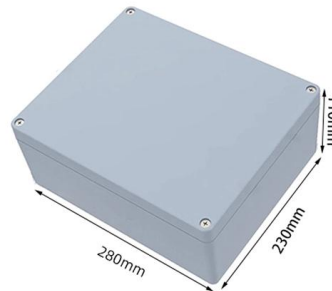


A Distribution Network Automation Terminal Configuration Method

The main purpose of assembling automation terminals in the distribution network is to reduce the power outage time caused by permanent faults, reduce power outa

What Is A Distribution Automation Terminal?

The distribution automation terminal is the execution unit of the distribution automation system and an important part of the distribution automation system.



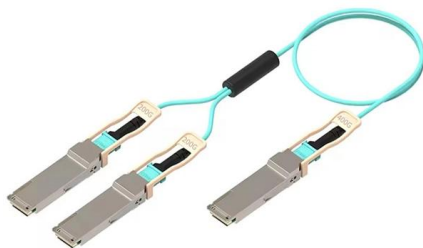
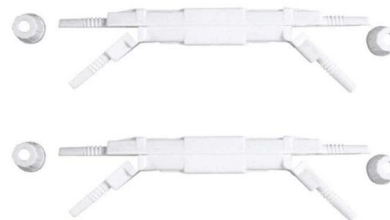
Power Distribution Blocks

Power distribution blocks manage power wiring and branching, as well as provide tap-off points. Available in open or finger-safe styles, they offer high short-circuit



Distribution Automation Handbook

The horizontal communication between feeder terminals in each cubicle provides the possibility for station level automation and gateway connections to upper level systems for complete primary



Research on Intelligent Terminal Unit for Power Distribution Automation

In order to mitigate the cost of manpower and resource in maintenance of power distribution assets, and to deal with the inefficiency caused by the separated protection / automation system and

Process Automation , Honeywell

We assist the industry by deploying flexible, powerful, and safe automation solutions for more effective chemicals businesses. Honeywell's comprehensive solutions



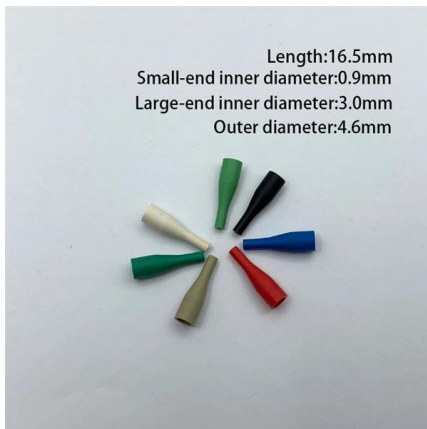


Intelligent acceptance systems for distribution automation terminals

Abstract The investigation into intelligent acceptance systems for distribution automation terminals has spanned over a dec-ade, furnishing indispensable assistance to the power industry. The integration

Power System and Substation Automation Guide

The elements that characterise distribution automation systems are given the definition by the IEEE. According to the IEEE, a Distribution Automation



Self-healing distribution automation terminal based on IEC61850

The distribution automation terminal is the key link to realize intelligent power distribution, which is of great significance for improving the reliability rate of power supply. This paper designs

Contact Us

For datasheets, pricing, or custom telecom energy solutions, please visit:
<https://koskolong.co.za>