



Adam Tas Corridor Energy

What is an SFP optical port on a switch





What is an SFP optical port on a switch

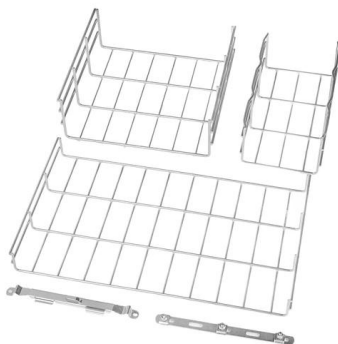
What Is an SFP Port on a Gigabit Switch? Full Guide 2026

Learn what an SFP port is on a Gigabit switch, the types of SFP ports, SFP vs RJ45 differences, long-distance fiber options and real-world use



Security Camera System setup with Fiber Optic Cable

Fiber optic SFP modules - 1 for each SFP Uplink port you intend to use Fiber optic cable within limits of the SFP Ethernet networking cable to



What Is an SFP Module? (Comprehensive Guide Including Fiber Optic)

Compared with the larger Gigabit Interface Converter (GBIC), the SFP format reduces space occupation by approximately 60%. This groundbreaking improvement has significantly increased the port density

8 port Fiber Optic SFP Switch

The Fastcabling 8 Port Fiber Optic SFP switch features 8 * 1Gps SFP ports and 2 gigabit uplink RJ45 ports. It can be used as a central



What Is an SFP Module? -- Complete Guide to SFP, SFP+ & SFP28

An SFP (Small Form-factor Pluggable) is a compact, hot-pluggable transceiver module that allows networking equipment -- including switches, routers, servers, and media converters -- to support



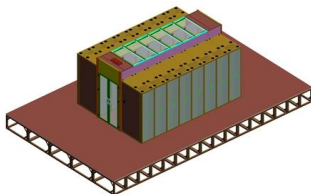
A Straightforward Guide to the SFP Port on a Gigabit Switch

An SFP port on a gigabit switch is a small, pluggable slot that gives you outsized flexibility: swap optics to change cable type or extend reach without replacing the switch.



Understanding SFP Switches: The Essential Guide to Fiber and

SFP ports connect to fiber optic cables and are meant for long-distance, high-speed connections, while RJ45 ports are used for Ethernet connections with copper cables.





D Link 10 Port Gigabit Smart Managed PoE+ Switch, 8x

Shop D Link 10 Port Gigabit Smart Managed PoE+ Switch, 8x PoE+ Ports (65W) + 2x Optical SFP Ports (DGS 1210 10P) Black products at Best Buy. Find low

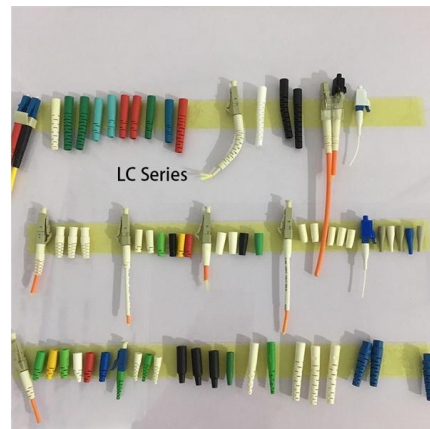


D-Link 10-Port Gigabit Smart Managed Switch (DGS

D-Link 10-Port Gigabit Smart Managed Switch (DGS-1210-10), 8 GbE + 2 Optical SFP Ports, L3 Lite, Surveillance Mode, Follows NDAA/TAA

What is TX Power and RX Power for SFP Module

1. Optical Power Meter A direct and convenient measurement tool that measures the actual optical power at the fiber end face. During testing, connect the patch cord to the transmit or



What Is An SFP Port? The Ultimate Guide To Your Switch'S Most

Don't leave your switch ports empty! Learn what an SFP port is, how it differs from standard RJ45 ethernet, and when to use it for fiber optic speeds and long-distance links.



What is an SFP Port? The Simple Guide to SFP, SFP+,

SFP stands for Small Form-factor Pluggable. It is a standardized port designed to accept a small, hot-swappable module. Think of the SFP port as a



A Straightforward Guide to the SFP Port on a Gigabit Switch

An SFP port on a gigabit switch is a small, pluggable slot that gives you outsized flexibility: swap optics to change cable type or extend reach without replacing the switch. For short building links use SX

How to interconnect the Gigabit RJ45 port with the SFP

Now Gigabit Ethernet has been popularized in a large area, and Gigabit Ethernet switches are also widely used in scenarios such as enterprise





How to use Ubiquiti SFP ports for fiber optic connections



Extend your network with fiber using SFP ports on UniFi gear. Learn how to choose modules, avoid pitfalls, and set up fast, reliable fiber links.

What is a 10G SFP+ Switch and How to Use It?

What's a 10G SFP+ Switch? A 10G SFP+ switch is a network switch equipped with SFP+ ports that support 10Gbps speeds. Devices (such as

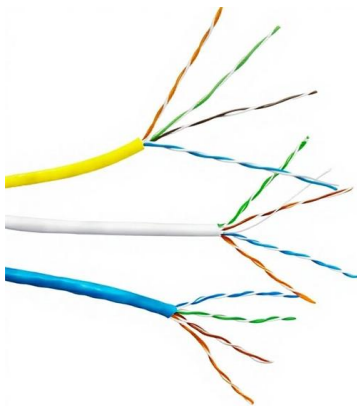


What is a Switch Port? A Complete Guide

What is a switch port? A switch port is a physical switch that evolves with the network and the type of transmission media. Connecting different devices

What Is an SFP Port on a Switch and How Does It Work

An SFP port (Small Form-factor Pluggable port) is a compact, hot-swappable interface used in network switches, routers, firewalls, and servers.



What Is an SFP Port on a Gigabit Switch?

An SFP port (Small Form-Factor Pluggable port) on a Gigabit switch is a dedicated slot designed to support SFP modules, enabling flexible data

SFP+, XFP, QSFP+, DAC Twinax Cable 10Gtek Transceivers Co., Ltd

DAC Twinax Cable Maker. CE, FCC, RoHS, ISO9001 Certified. Professional Manufacturer focusing on SFP+ Cables, QSFP+ Cables, MiniSAS Cables, QSFP Cables, XFP Cables, CX4 Infiniband Cables



What is SFP Port? Everything You Need to Know

An SFP port is a physically small slot in a networking device that accepts an SFP module. This definitive guide tells you everything about it.



Understanding SFP Port: A Guide to Gigabit Ethernet

A: There are two main types of SFP ports: copper SFP ports and fiber SFP ports. Copper SFP ports use copper cables, such as Cat6 Ethernet cables,



Differences Between ST, SC, FC, and LC Fiber

SC is more stable and is widely used in routers and switches, whereas ST is more common in older patch panels. Q2: Which connector is used

What Is An SFP Port? The Ultimate Guide To Your Switch'S Most

Don't leave your switch ports empty! Learn what an SFP port is, how it differs from standard RJ45 ethernet, and when to use it for fiber optic speeds and long-distance links.



Contact Us

For datasheets, pricing, or custom telecom energy solutions, please visit:
<https://koskolong.co.za>