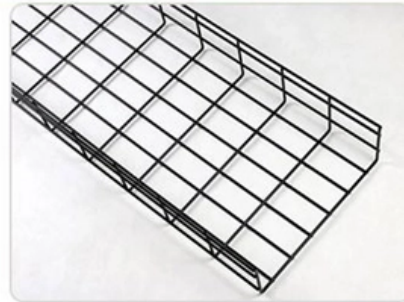




What is the bracket of the cable tray called

Product Photography





Overview

A cable tray bracket is a support mechanism designed to hold and secure cable trays in place. Fittings can, on the one hand, be used for horizontal or vertical changing of the routing direction or, on the other, to change the height or width of the. Q1: What are the four main components of a cable tray system?

A: The four main components are tray sections, fittings, supports, and accessories. Built from 2mm thick ribbed steel and finished with a hot dipped galvanised (HDG) coating, this bracket offers excellent strength.



What is the bracket of the cable tray called



Cable Tray Systems

Durable and reliable cable tray systems providing premium performance in commercial and industrial applications, available in a variety of materials to suit your needs.

Cable Tray Systems: A Complete Guide to Types

Cable Tray Supports: These include trapeze hangers, center-span supports, and wall brackets that anchor the entire system to the building structure



What are the main types of cable tray?

Introduce the main types of cable tray including ladder cable tray, perforated cable tray, solid bottom cable tray and wire mesh cable tray.

Cable Tray Brackets: Uses & Types Explained

A cable tray bracket is a support mechanism designed to hold and secure cable trays in place.



These brackets are integral components of cable tray systems, providing stability and

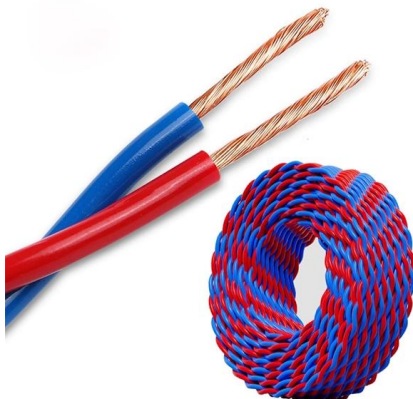


Guide to cable support systems

Universal systems for cable support structures are used for small loads. The systems are suspended from the ceiling with threaded rods, stand-off brackets allow raised floor mounting of cable trays,

Guide to cable support systems

The systems are suspended from the ceiling with threaded rods, stand-off brackets allow raised floor mounting of cable trays, ladders and mesh cable trays. The universal systems comprise ceiling



Cable tray bracket

Types of Cable Tray Brackets A cable tray bracket is a vital structural component in electrical installations, providing secure support for cable trays that carry power, control, and communication



Everything You Need to Know About Cable Trays , Cable Trays

Discover the different types of cable trays, their many benefits when used in electrical wiring and network cabling, installation processes, and essential maintenance tips for keeping your



Best practice guide to cable ladder and cable tray

Cable ladder and cable tray systems The following recommendations are intended to be a practical guide to ensure the safe and proper installation of

Cable Trays and Their Uses: Definition, Types, and

Learn about cable trays for desks, accessories, and how they compare with raceways, conduits, and trunking for efficient cable management.



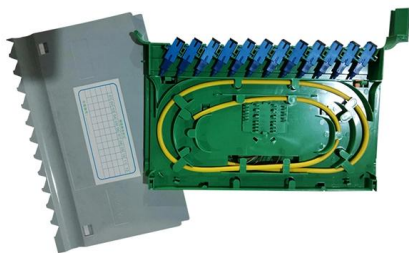
100+ Essential Questions Answered About Cable Trays:

Discover over 100 expert answers about cable trays, covering key topics like material selection, load capacity, installation methods, and maintenance.



Buy Wholesale Frp Cable Tray in Oman , Frp Cable Tray from Oman

Find the best Oman Frp Cable Tray and explore our extensive collection of high-quality Frp Cable Tray from Oman. Buy wholesale Frp Cable Tray in Oman from trusted suppliers.



CABLE TRAY SYSTEMS GUIDE

Commonly called the Load Class, this defines the load-carrying capability of the tray for a specific support span distance. The design and cost of the cable tray is greatly affected by this designation.

Cable Trays Glossary

Channel Cable Tray. A prefabricated metal structure consisting of a one-piece ventilated bottom or solid bottom channel section, or both, not





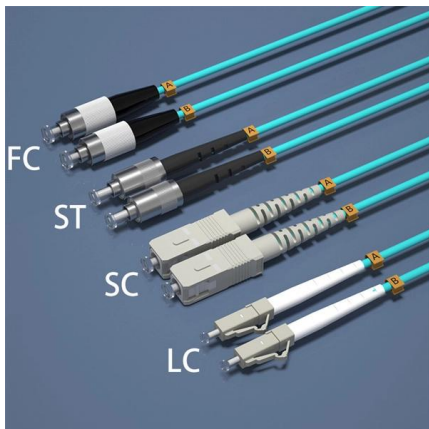
Cable Tray Brackets & Hangers

Trapeze Support Brackets: Pre-assembled for quick installation, these brackets provide robust support for cable trays with various widths and drop lengths, including options like 100mm and 150mm widths



Cable Tray Technical Guide A practical guide to product selection and

Cable tray is considered to be a system. It must provide continuous support for cables, and the electrical continuity of the cable tray system must be maintained.



What are Cable Trays & Different Types of Cable Trays

Learn what cable trays are & explore the various types, benefits, and purposes. Gain insights into how electrical cable trays can revolutionize your

Resources for Cable tray and ladder systems

Submittals for cable ladder and tray Eaton's submittal builder tool for B-Line series cable ladder and tray allows you to easily filter, select and download straight



How do I mount a cable tray to the wall and floor using an end bracket

The end of the cable tray is attached to the wall or the floor with two end brackets (RÄF). The end bracket is fixed to the shelf using the screw set included with the end bracket.



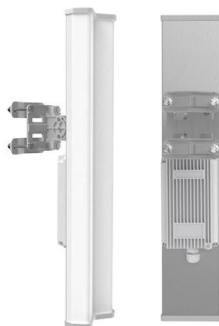
Cable Tray Mounting Brackets , McMaster-Carr

Choose from our selection of cable tray mounting brackets in a wide range of styles and sizes. Same and Next Day Delivery.



What are the main components of a cable tray?

Q2: What fittings are used in a cable tray system? A: Common fittings include elbows, tees, crosses, reducers, and risers, which are used to change





Are there various styles of cable tray support brackets?

Wall-mounted support brackets are the most common type of brackets used for cable tray installations. As the name suggests, these brackets are attached to the wall,

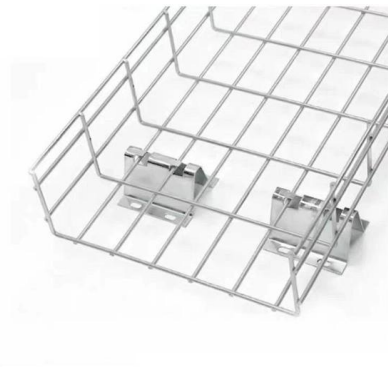


Cable tray

A solid-bottom tray provides the maximum protection to cables, but requires cutting the tray or using fittings to enter or exit cables. A deep, solid enclosure for cables

What is Cable Tray and How it is used in Industrial

What is Cable Tray? In electrical cabling, a cable tray is a metallic structure used to handle insulated electrical power distribution, control, and



How to Fix Common Cable Management Issues using

Discover common cable management problems and how cable tray accessories effectively solve them to ensure safety and performance.



What Is A Cable Tray? 5 Types Of Cable Trays

A cable tray is a structural system used to support and manage electrical cables in various settings, such as industrial, commercial, and residential environments.



Legrand Tray

Legrand cable tray stand-off brackets are used to mount cable trays to walls or other vertical surfaces, creating space between the tray and the mounting surface.

Brackets for Cable Trays

Floor Mount Brackets: Floor mount brackets are used to support cable trays on the ground or floor. They provide stability and prevent cable trays from sagging under





Contact Us

For datasheets, pricing, or custom telecom energy solutions, please visit:
<https://koskolong.co.za>