



Adam Tas Corridor Energy

What is the internal structure of a beam splitter





Overview

In its most common form, a cube, a beam splitter is made from two triangular glass prisms which are glued together at their base using polyester, epoxy, or urethane-based adhesives.)A beam splitter or beamsplitter is an optical device that splits a beam of light into a transmitted and a reflected beam. It is a crucial part of many optical experimental and measurement systems, such as interferometers, also finding widespread application in fibre optic telecommunications.



What is the internal structure of a beam splitter



Beam Splitters - optical power splitter, beamsplitter, thin

What are Beam Splitters? A beam splitter (or beamsplitter, power splitter) is an optical device which can split an incident light beam (e.g. a laser beam) into two

How Beamsplitters Work: Types, Mechanisms, and

This article explains the working principles of beamsplitters, detailing how they divide a beam of light into two separate paths, the different types of



The Buyer's Guide to Beam Splitters , Blue Ridge Optics

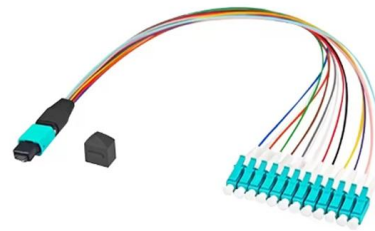
Matching the beam splitter's specifications to the characteristics of the light source ensures optimal performance. This minimizes light losses and aberrations while maintaining the

How to Select a Beamsplitter

What is a Beamsplitter? A beamsplitter is an optical device that divides an incident beam of light into two parts: one part is transmitted



through the splitter, while the



What are Beamsplitters?

Cube beamsplitters are constructed using two typically right angle prisms (Figure 1). The hypotenuse surface of one prism is coated, and the two prisms are cemented

Beam splitter , Description, Example & Application

A beam splitter is an optical device that splits a single beam of light into two or more beams. It is commonly used in scientific and industrial applications.



How Do Optical Beam Splitters Work & Applications

A plate beam splitter uses thin glass combined with a reflective coating as its structure. Its compact design makes it desirable when minimising physical





Understanding Beamsplitters: Types, Principles, and

The assembly works by splitting the incoming light into one to two beams, one or more of which are transmitted through the optical element and one



Waterproof and dustproof, reliable and safe

The outer classic sink design allows the sealing ring of the cabinet and door to be seamlessly compressed without leaving a trace of gaps



What Is a Beam Splitter and How Does It Work?

The mechanism by which a beam splitter operates is based on the principles of partial reflection and partial transmission. When light encounters the specialized surface, a portion is

What is a Beam Splitter: Types And Applications

A beam splitter is a device used to separate or combine light. It is widely used in guiding light in optical systems, enhancing imaging and



What is a Beam Splitter?

Many beam splitters have the form of a cube, where the beam separation occurs at an interface within the cube as shown in the above figure. Such a cube is made of two triangular glass



Physics:Beam splitter

A beam splitter or beamsplitter is an optical device that splits a beam of light into a transmitted and a reflected beam. It is a crucial part of many optical experimental and measurement



How does a beam splitter work? Common types and use cases

At the core of a beam splitter's functionality is its ability to split an incoming light beam into multiple paths. This is typically achieved through processes of refraction, reflection, or diffraction.

Physics:Beam splitter

In its most common form, a cube, a beam splitter is made from two triangular glass prisms which are glued together at their base using polyester, epoxy, or urethane-based adhesives.



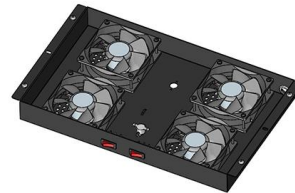


What Are Optical Beamsplitters? , Plate, Cube & Dichroic Types

In Summary Optical beam splitters are versatile devices, typically made of glass, used in separating or combining light beams. These optical components play a major role in the science and tech industry.

What Is a Beam Splitter? Types, Uses, and How It Works

Learn how beam splitters divide light into separate paths, the main types available, and where they're used in optics and scientific instruments.



What is a Beam Splitter, and What are Its Functions and

In the intricate realm of optics, a beam splitter stands as a fundamental and versatile optical component. It plays a pivotal role in

Beam Splitter

A beam splitter is defined as an optical device that effects a linear transformation of fields presented at two input ports, producing output beams that are related to the input fields in a characteristic manner



Flyriver: Understanding the Beam Splitter: Principles, Applications

The beam splitter is a fundamental optical component used to divide a beam of light into two or more separate beams. This seemingly simple device plays a crucial role in a wide variety of scientific and



Beam Splitter Cube: Overview and Applications

Beam splitter cube plays a very important role in splitting and combining beams. This optical element is composed of two right-angle prisms and can be divided into polarization splitter cube and non



How Does a Fiber Optic Splitter Work

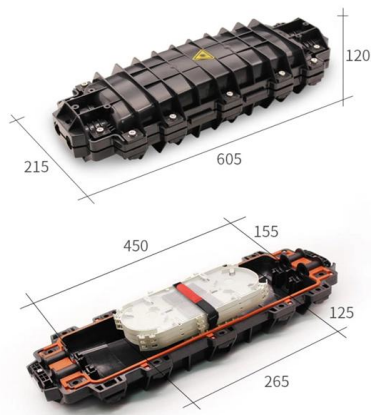
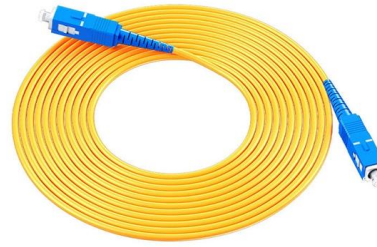
What is a Fiber Optic Splitter? Definition and Passive Operation As a passive component, the fiber optic splitter receives one input signal through a single fiber optic cable to





What Is a Beam Splitter and How Does It Work?

Pellicle Beam Splitter The Pellicle Beam Splitter uses an extremely thin membrane of optical film stretched over a frame. Because the film is only a few micrometers thick, this design



Infrared Spectroscopy: Beam Splitters and Detector Physics Explained

Infrared spectroscopy sits at the heart of identifying and studying molecular structures, but honestly, its precision hinges on how well the instrument manages light. Two components really

Beamsplitter

Beam Splitter Gratings Multiple beamsplitters, also known as array illuminators, are gratings with sophisticated periodic structure that are capable of transforming an incident plane wave into a set of



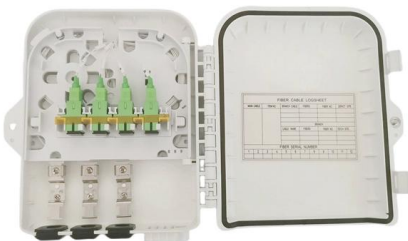
Beam splitter

Beam splitters A beam splitter or beamsplitter is an optical device that splits a beam of light into a transmitted and a reflected beam. It is a crucial part of many optical



Polarizing Beamsplitter

Sénarmont polarizing beam splitters are similar, but the polarizations of the deviated and undeviated beams are interchanged. Wollaston polarizers (Fig. 7b) deviate both output eigenpolarizations with



Beam Splitters - optical power splitter, beamsplitter, thin-film

What are Beam Splitters? A beam splitter (or beamsplitter, power splitter) is an optical device which can split an incident light beam (e.g. a laser beam) into two (or sometimes more) beams, which may or

Optical Splitters Demystified: The Silent Heroes

explains how optical splitters enable FTTH, their types (FBT vs. PLC), key ratios, and how they integrate with LINK-PP optical modules for a seamless





Beam Splitter

The split beams have the same intensity under linear polarization (LP), which is combination of LCP and RCP. Some beam-splitting metasurfaces are composed of arrays of chiral nanoparticles; examples

Contact Us

For datasheets, pricing, or custom telecom energy solutions, please visit:
<https://koskolong.co.za>