



Adam Tas Corridor Energy

What is the normal level of optical cable loss





Overview

Q: What is acceptable loss in fiber optics?

A: For singlemode fiber, loss should be under 0. Q: How do I know if fiber loss is too high?

A: Compare your results with standard loss limits. The estimate, called a "loss budget" is calculated using typical component losses for. This can be due to various factors, including attenuation, connectors, and splices. This testing will ensure that the data necessary to properly evaluate any future system malfunctions will be functioning.



What is the normal level of optical cable loss

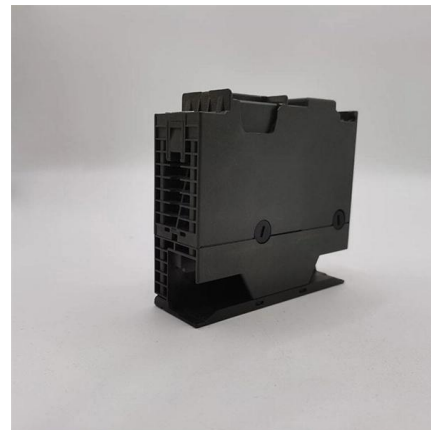


Optical power loss (attenuation) in fiber access

Light traveling in an optical fiber loses power over distance. The loss of power depends on the wavelength of the light and on the propagating material. For silica

fiber loss limits

Fiber loss, or attenuation, refers to the reduction in optical power as light travels through a fiber optic cable. While some loss is expected, excessive or



Understanding Fiber Loss: What Is It and How to

This post introduces the main fiber loss types, the calculation process of link loss including fiber attenuation, connector loss, and splice loss, calculating

Guidelines Corning Recommended Fiber Optic Test

3. Tier 1 and Tier 2 Testing c systems. The two tiers of testing are Tier 1 required. This level of



testing consists of link attenuation testing, link length, and a polarity check. The fiber optic link attenuation is



Acceptable Light Levels for Fibers and the Optical Power Budget

The maximum length of fiber optic cables is limited by the transmitter's output power and receiver's sensitivity. Calculating the Optical Power Budget Calculating the optical power budget is important in

Fiber Loss Standard

The so-called loss of optical fiber loss refers to the attenuation per unit length of the optical fiber, and the unit is dB/km. In the case of commonly used



What Is ORL in Fiber Optics? A Guide to Optical Return Loss

ORL Thresholds and What They Mean Optical Return Loss (ORL) is a critical metric in fiber optics network, directly influencing signal



Fiber-Optic Cable Signal Loss, Attenuation, and Dispersion , Juniper

Signal Loss in Multimode and Single-Mode Fiber-Optic Cable Multimode fiber is large enough in diameter to allow rays of light to reflect internally (bounce off the walls of the fiber). Interfaces with



Understanding Fiber-Optic Cable Signal Loss, Attenuation, and

To determine the power budget and power margin needed for fiber-optic connections, you need to understand how signal loss, attenuation, and dispersion affect transmission. The uses



Guidelines On What Loss To Expect When Testing

Short fiber optic premises cabling networks are generally tested in three ways, connector inspection/cleaning with a microscope, insertion loss testing with a light



What is the normal range of fiber optic light decay loss?

What is the normal range of fiber optic light decay loss? - Walsun. For normal fiber broadband, the ideal range of light attenuation is -20dBm to -25dBm. For speeds up to 200M, the



Fiber Optic Testing FAQs

More on power measurements. What are the measurement units for power? Optical power is measured in linear units of milliwatts (mW), microwatts (μ W - really the greek letter "mu"W), nanowatts (nW)



The importance of measuring fiber loss and distances

Fiber optic networking can be a daunting undertaking, but it really is not as difficult as it seems. Understanding factors such as fiber modes, launch power, receive



Fibre Optic Cabling Loss Limits Explained - Trend

Learn about fibre optic cabling loss limits & how to calculate them. Gain insights from experts on acceptable loss for cabling projects & explore the





Application



Normal Fiber Loss Below dB_NEWS_OPTICAL FIBER CABLE

In the field of optical communication, fiber loss refers to the reduction in signal strength as it travels through an optical fiber. This loss can occur due to various factors such as absorption, scattering,



How to Calculate Fiber Optic Loss: Key Factors and

Learn how to accurately calculate fiber optic loss to ensure optimal network performance. Explore types of loss, industry standards, and step-by-step

Signal Loss: A Guide to Causes and Mitigation

At its core, signal loss refers to the reduction in strength of a signal as it traverses through a medium, be it guided like copper or fiber-optic cables, or



Optical Fiber Loss: Causes and Calculations

Introduction to Optical Fiber Loss Optical fiber loss is a fundamental concept in fiber optic communications, representing the attenuation of light signals as they travel

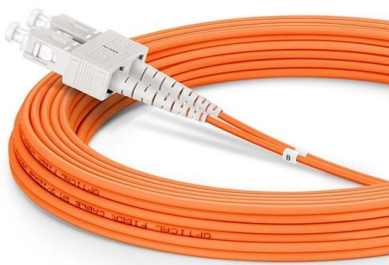


Insertion Loss Definition, Formula, Causes,

What is Insertion Loss? Insertion loss is the amount of energy that a signal loses as it travels along a cable link. It is a natural phenomenon that occurs

What is the normal range of fiber optic light decay loss?

For normal fiber broadband, the ideal range of light attenuation is -20dBm to -25dBm. For speeds up to 200M, the light attenuation must be less than -25dBm. With light attenuation at



Fiber Optic Series: Understanding dB and dBm values

When conducting tests on fiber optic networks, the results are typically presented on a meter readout in dB. In this context, optical loss is



Fibre Optic Cabling Loss Limits Explained - Trend Networks

Learn about fibre optic cabling loss limits & how to calculate them. Gain insights from experts on acceptable loss for cabling projects & explore the standards.



Normal Range of Fiber Loss What is it_NEWS_OPTICAL FIBER CABLE

Fiber loss refers to the reduction in signal strength that occurs as light travels through an optical fiber. It is an important parameter to consider when designing and installing fiber optic networks. The normal

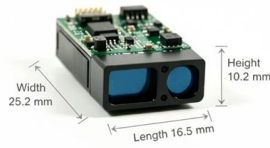
Optical Loss & Testing Overview , Kingfisher International

Application note: Practical overview of optical loss testing theory and practice for fiber optic communication systems.



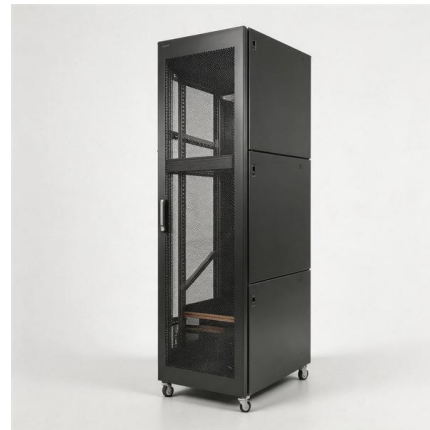
Determining optical fiber link loss

1) Determine the optical fiber loss at the testing wavelength--the product of a loss factor times cable length. The optical loss factor is dependent on wavelength-



Understanding Fiber-Optic Cable Signal Loss, Attenuation, and

To determine the power budget and power margin needed for fiber-optic connections, you need to understand how signal loss, attenuation, and dispersion affect transmission.

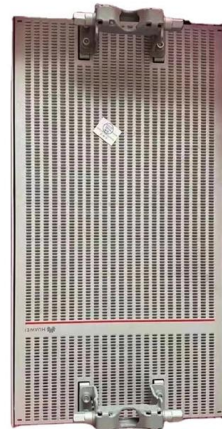


Reflectance and Optical Return Loss (ORL) Measurement and Testing

Reflectance and Optical Return Loss (ORL) Measurement and Testing - OptiFiber Beginning with software release 1.8, OptiFiber is able to measure optical return loss. Optical return loss for individual

Fiber Optic Loss Explained: Measurement, Impact, and

What Is a Good Level of Fiber Optic Loss in Practice? Fiber optic loss, also known as optical attenuation, refers to the reduction of optical signal



WORLD WIDE WEB JOURNAL Home

will open to start the export process. The process may take but once it finishes a file will be downloadable from your browser. You may continue to browse the DL while the export process is in

Contact Us

For datasheets, pricing, or custom telecom energy solutions, please visit:
<https://koskolong.co.za>