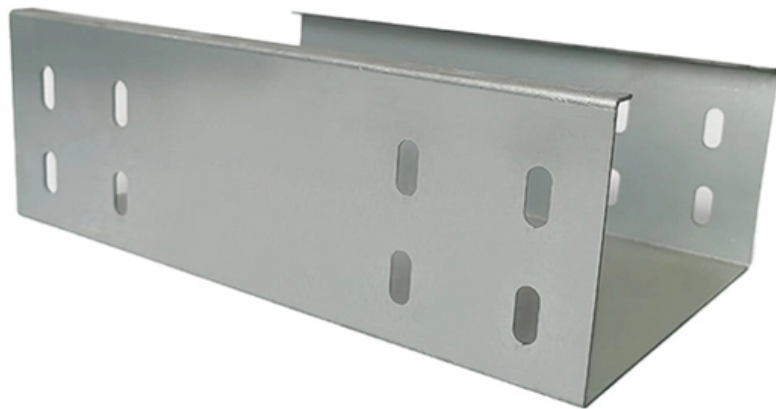




Adam Tas Corridor Energy

What material is the integrated fiber optic welding tray made of





Overview

The Integrated Routing (IR) single element tray is manufactured from ABS and finished to a high specification to eliminate the risk of snagging or microbends. All retaining tabs on the tray have radius edges and rounded corners where fibre may pass. This 12 core Fiber Optic Splice Tray (ODF module) is an integration melting module 12 core fiber optic splice tray. ODF optical fiber distribution frame is standard 19 inch chassis, capacity from 12 core to 96core, high density, all modular design. This unit box make fiber splicing, fiber cable storage, cable distribution in one set, each fused distribution module can be individually extracted, satisfy the need.



What material is the integrated fiber optic welding tray made of

Fiber Laser Welding Explained: Applications & Advances



Fiber optic laser welding uses a concentrated beam of light to melt and fuse materials. This technology is increasingly popular in industries like

Fiber Laser Welding: A Comprehensive Guide - OMTech

Welding is an age-old process that uses localized heat to fuse together metals. In recent times, welders have been using fiber lasers to generate heat, which has



SC ODF 96 Port Patch Panel Fiber Optic Distribution Frame Welding

Buy SC ODF 96 Port Patch Panel Fiber Optic Distribution Frame Welding Tray 12 Fibers from quality Fiber Optic Patch Panel China factory.



Fiber Fusion Splice Tray DataSheet , FS

Fiber Fusion Splice Tray Fiber optic splice trays are designed to provide a location to store and to



protect the fiber cables and the splices. Each tray provides space for mounting fiber splice protectors



Optical / fiber optic 12 fiber splice tray

Optical / fiber optic 12-fiber splicing tray for holding spliced fibers of fiber optic cable. The welding points of the fibers are protected by thermofits (fiber protectors) and



Fiber Optic Closure 96 Core/Cable Joint Box /Cable

Product Description Fiber Optic Closure 96 Core/Cable Joint Box /Cable Connecting Fittings with Fiber Splice Tray Description: Innovative design is an erect and



12port Fiber Optic Distribution Frame Welding

Material: ABS (except cover is aluminium) Color: Blue. Capacity: 12 fibers. Type: Telescopic. Suitable adapter: FC,SC,E2000.





Fiber Splice Tray 48 Cores

The splicing panel is assembled in the optical cable junction box. Part of the optical fiber is fused with the tail fiber for connection scheduling, and the other part is



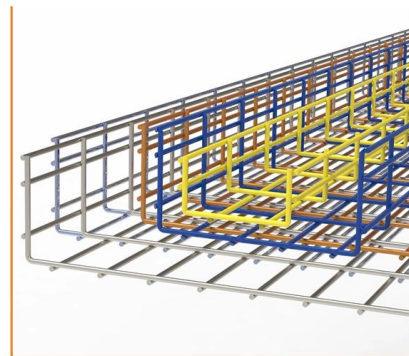
- ✓ 50KW/100KWH
- ✓ HIGHER POWER OUTPUT IN OFF-GRID MODE
- ✓ CONVENIENT OPERATION & MAINTENANCE
- ✓ PRE-WIRED

Fiber Laser Welding for Precision Machining

Discover how fiber laser welding enhances precision machining with high-speed, low-distortion metal joining. Explore capabilities, materials, and use cases.

Integrated Routing Fibre Optic Splice Tray TRAY-SE-IR

The Integrated Routing (IR) single element tray is manufactured from ABS and finished to a high specification to eliminate the risk of snagging or microbends. All



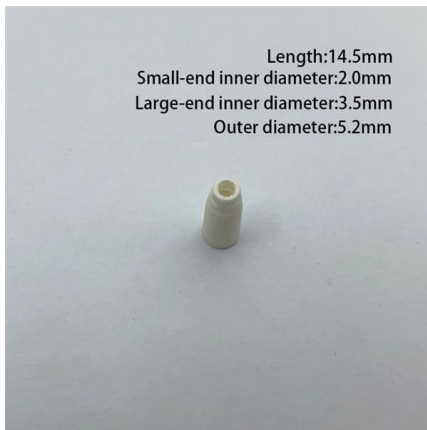
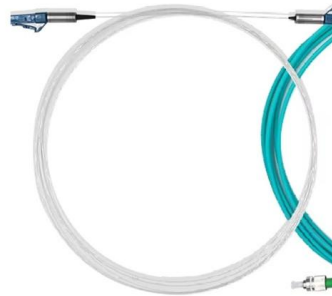
OPTICAL FIBER WELDING TRAY

For example, the trays are divided into optical splitter trays, spare core trays, rental service core storage trays, etc. Yellow trays, blue trays, red trays, etc., may be selected to represent the above meanings,



Fiber Optic Splice Tray

24 Core Fiber Optic Splice Tray We are manufacturer of the 24 core fiber optic splice trays, they are used in fiber optic management applications, these fiber trays are made of high quality industrial



Fiber optic welding course.

The conducted trainings are intended not only for experienced installers, but also for all those willing to acquire knowledge and skills of a future optical fiber welder. Welding optical fibers is not a

Iuron Optical Fiber Patch Panel 12 Core Splice Tray V3 Empty

The IU-CEN-ODF-12-TRAY-V3 is a 12-core fiber optic splice tray designed for efficient fiber management, storage, and fusion protection. This tray facilitates easy installation and movement,





GAOTek 12 Core Fiber Optic Splice Tray (ODF module)

Overview GAOTek 12 core Fiber Optic Splice Tray (ODF module) is

Fiber Laser

Laser welding is the most reliable solution for high-speed, high-quality joining across a wide range of material combinations and thicknesses in nearly every industry. Laser welding simply requires a



US6608959B2

Fiber optic cables have been developed as a medium to transfer information within a communication system. the fibers are linked to optical transmitters and optical receivers.

WO2020063662A1

An optical fiber welding tray, comprising an optical fiber welding tray body (100), and a marker (200) which is detachably connected on the optical fiber welding tray body



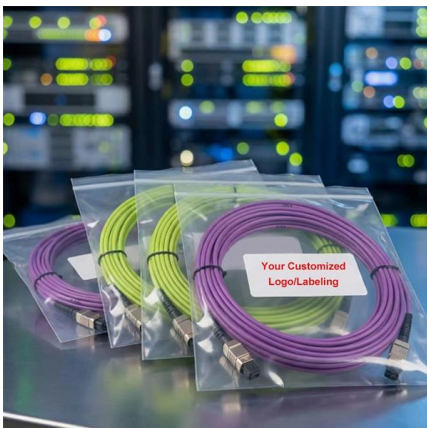
Fiber-optic cable

A fiber-optic cable, also known as an optical-fiber cable, is an assembly similar to an electrical cable but containing one or more optical fibers that are used to carry



The FOA Reference For Fiber Optics

Fiber optic joints or terminations are made two ways: 1) splices which create a permanent joint between the two fibers or 2) connectors that mate two fibers to



fiber optic welding machine-Feiboer Fiber Optic Cable

An optical fiber splicer is a device that uses an electric arc to fuse the ends of two optical fibers together to form a long optical fiber. The resulting joint,



Trade Tariff: look up commodity codes, duty and VAT rates

Search for import and export commodity codes and for tax, duty and licences that apply to your goods.



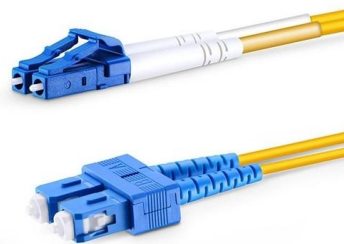
In the article we discuss laying, installing, welding optical

These include work related to cable laying, welding and installation, as well as post-installation measurements. In the first part of the article about optical



SC ODF 96 Port Patch Panel Fiber Optic Distribution Frame Welding

Latest SC ODF 96 Port Patch Panel Fiber Optic Distribution Frame Welding Tray 12 Fibers from Quality Fiber Optic Patch Panel, YINGDA TECHNOLOGY LIMITED - a Wholesale Supplier from China.



SC ODF 96 Port Patch Panel Fiber Optic Distribution Frame Welding

SC ODF 96 Port Patch Panel Fiber Optic Distribution Frame Welding Tray 12 Fibers



Boost Manufacturing with Fiber Laser Welding System

A fibre laser welding system is a state-of-the-art industrial instrument that fuses metals with unparalleled speed and precision using a focused beam of fiber-optic laser light. It provides high



GAOTek 24 Core Fiber Optic Splice Tray

The splice tray enhances fiber splicing capabilities and provides a dedicated location for splicing fiber optic cables. It can be integrated into fiber distribution frames,

Fiber Laser Welding Guide: Principles, Advantages & Applications

I. What is Fiber Laser Welding? At its core, fiber laser welding is an advanced fusion welding process that utilizes a highly concentrated beam of coherent light--generated through an





High Strength Integrated Welding Modular Fiber Optic

12 Cores Fiber Optic Integrated Welding Modular Tray Cassette Plate Plastic Fiber optic welding splice tray is placed in all kinds of communication and electric

Contact Us

For datasheets, pricing, or custom telecom energy solutions, please visit:
<https://koskolong.co.za>