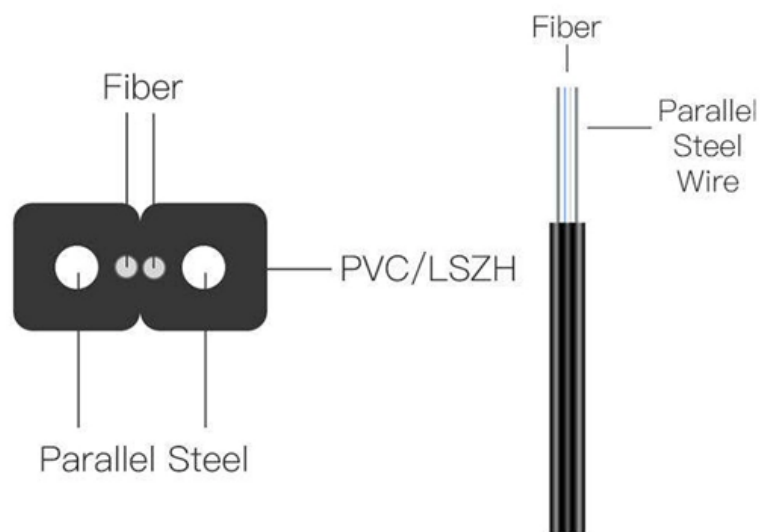




What optical modules do Huawei switches use





What optical modules do Huawei switches use



Cisco PWR-C6-125WAC 125W AC Power Supply for Catalyst 9200L

The Cisco PWR-C6-125WAC is a high-reliability AC power supply module designed specifically for the Cisco Catalyst 9200L Series switches. As a critical component of the Catalyst 9000 ecosystem, this

FAQs About Optical Modules

Description: Huawei switches must use Huawei-certified optical modules. Non-Huawei-certified optical modules cannot ensure transmission reliability and may affect service stability.



WORLD WIDE WEB JOURNAL Home

will open to start the export process. The process may take but once it finishes a file will be downloadable from your browser. You may continue to browse the DL while the export process is in

Introduction of Optical Modules on Huawei Switches

When Huawei switches are connected to other products such as routers, comply with the



preceding optical module interoperation rules. The following describes the



OPTICAL MODULES FOR HUAWEI S SERIES SWITCHES

A switch must use optical or copper modules that have been certified for use on Huawei switches. Non-certified optical or copper modules cannot ensure transmission reliability and may affect service

The Ultimate Guide to SFP Modules (2026): Types,

What is an SFP? SFP (Small Form-factor Pluggable) is a compact, hot-pluggable network interface module used to connect network devices (switches, routers,



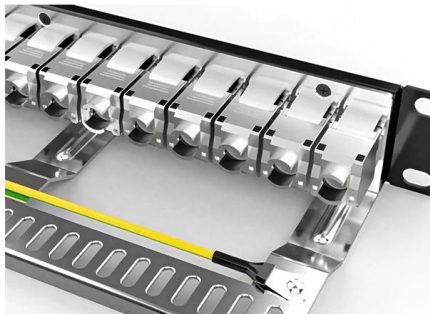
What Is an Optical Module and Its FAQs (V200)

CloudEngine series switches must use optical modules that are certified for Huawei data center switches. Optical modules that are not certified for Huawei data center switches cannot ensure



01-04 PLUGGABLE MODULES FOR INTERFACES

A switch must use optical or copper modules that have been certified for use on Huawei S switches. Non-certified optical or copper modules cannot ensure transmission reliability and may affect service



Huawei Ethernet Switch & Network Switches Solutions

Thunder link offers various models of Huawei Ethernet switches and network switches, including the S5720, S6720, S6730, CE6800 and CE12800, designed

Cisco SFP vs GBIC vs XFP vs SFP+: A Practical

All NS Comm optics, patch cords, and modules are multi-brand compatible, tested for Cisco, Huawei, H3C, Arista, and Alcatel-Lucent switches.



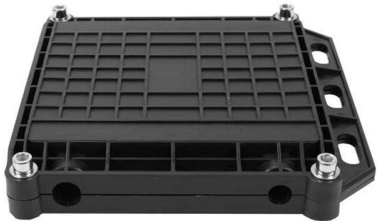
Risks of Using Non-Huawei-Certified Switch Optical Modules

Unnormalized temperature monitoring causes incorrect alarms. The temperature monitoring systems of some non-Huawei-certified switch optical modules do not comply with industry



8 Pluggable Modules for Interfaces

A switch must use optical or copper modules that have been certified for use on Huawei S switches. Non-certified optical or copper modules cannot ensure transmission reliability and may affect service



What Is an All-Optical Ethernet Switch? Why Do We Need It

All-optical Ethernet switches are a type of switch that provides optical uplink and downlink ports, making them an ideal choice for building an all-optical campus network. They can function as

Cisco C9200L-STACK-KIT= Switch Stacking Module

High-performance stacking kit for Cisco Catalyst 9200L switches. 80Gbps bandwidth, supports 8-unit stacks, simplifies management with single IP control.





How to Choose the Right Optical Transceiver in 2025

Learn how to select the right optical transceiver for your switch or router. Compare SFP, SFP+, QSFP28, Cisco SFPs, and Huawei modules with



NSComm100G Optical Transceiver Modules: A Practical Guide

Most 100 G Ethernet optics you'll encounter in data centers and enterprise backbones use this housing. In short: if you want a 100 Gbps Module that "just works" across mainstream switches,



Optical Modules for Huawei S Series Switches

A switch must use optical or copper modules that have been certified for use on Huawei switches. Non-certified optical or copper modules cannot ensure transmission reliability and may affect service

Active Optical Cables (AOC) Explained: Advantages,

Learn AOC advantages and limitations, and how they compare to DAC and optical modules. Includes use cases, deployment tips and FAQs for



Optical Module Solutions for Huawei S5700/S5720 Series Switches

This article summarizes several solutions for using optical modules with switches and common problems encountered during usage, along with specific solutions.



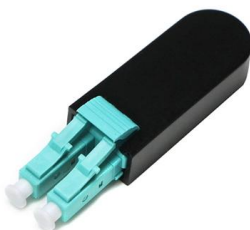
Types of Optical Modules

DWDM and CWDM modules are used for long-distance transmission. The transmit power of a long-distance optical module is often larger than its overload power. Therefore, when using such optical



LonRise Launches High-Performance OSFP-800G-DR8 Transceiver

LonRise ensures that every module undergoes rigorous compatibility testing to guarantee peak performance in mission-critical environments. 2. What The OSFP-800G-DR8 is an "Octal Small





The Optical Modules Supported by Switches Price and Datasheet at

The following figure shows the optical modules supported by the Switch. You can also use the hardware query tool to query the components including optical modules supported by



Introduction of Optical Modules on Huawei Switches

A 40GBASE-PAM4 optical module can interoperate with a 40GBASE-ePAM4 optical module. A 100GBASE-CLR4 optical module can interoperate with a 100GBASE

Cisco PWR-C6-600WAC 600W AC Power Supply for Catalyst 9200

600W hot-swap AC power supply for Cisco Catalyst 9200/9200L switches. Ensures stable power, enterprise-grade efficiency, and non-stop operation with 1-year warranty.



Troubleshooting for Optical Modules on Huawei Switch

When this optical module uses OM3 multimode optical fibers, its transmission distance is 0.3 km. The optical modules used on both ends must have the same



How to Identify Huawei-Certified Switch Optical Modules

A switch must use optical or copper modules that have been certified for use on Huawei S switches. Non-certified optical or copper modules cannot ensure transmission reliability and may



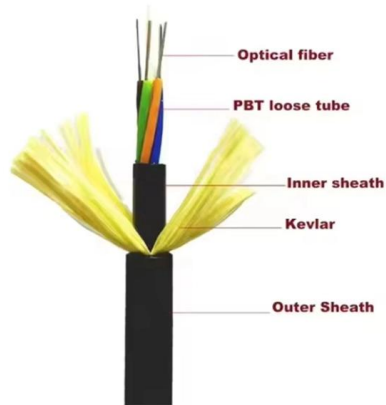
Network Switches , Huawei Enterprise

Huawei Ethernet Switches Turbocharge your enterprise network with high-performance, high-availability for resilient services and simplified management.

Advanced Connectivity: The Evolution of 800G QSFP-DD DR8 MPO

Discover the details of Advanced Connectivity: The Evolution of 800G QSFP-DD DR8 MPO Transceiver Modules in AI Data Centers at LonRise Equipment Co. Ltd., a leading supplier in





Important Notes About Using Optical Modules Certified for Huawei

A switch must use optical or copper modules that have been certified for use on Huawei S switches. Non-certified optical or copper modules cannot ensure transmission reliability and may

Contact Us

For datasheets, pricing, or custom telecom energy solutions, please visit:
<https://koskolong.co.za>