



**Adam Tas Corridor Energy**

# **What percentage of cable trays is considered acceptable**





## What percentage of cable trays is considered acceptable

---



### Essential Cable Tray Standards: Your Guide to Compliance & Safety

Design Considerations When designing a cable tray system, it's essential to consider factors such as load capacity, material selection, and environmental conditions. For instance, selecting stainless

### Cable Tray Fill Calculator

The Cable Tray Fill Calculator calculates allowable fill percentage and maximum numbers of cables, considering tray dimensions, cable sizes, spacing, and standards.



### Cable Tray Load Calculation and Sizing: Your Easy Guide

Worried about cable tray capacity? Learn simple cable tray load calculation steps. This guide helps you pick the right tray every time, keeping



### NEC Standards for Cable Trays: Grounding, Fill Capacity

These trays are ideal for use in commercial offices, industrial facilities, data centers, and



smart building infrastructure, where reliability, accessibility, and efficient cable management are



## Clearance percentages for electrical trunking and cable trays

The standard clearance percentage for electrical trunking or cable trays depends on the relevant standards and best practices. Here are some general guidelines: 1.



## A Guide to Installing and Supporting Electrical Cable Trays

A professional guide to installing electrical cable tray systems per NEC Article 392. Covers support, securing cables, and fill calculations.



## Cable Tray Questions , Cable Tray Institute

NEC section 318-5 (e) indicates that multiconductor cables rated 600 volts or less are permitted in the same cable tray, however, separation of power and control cables is necessary as indicated in other





## Free Cable Tray Fill Calculator , NEC & IEC Compliant Sizing , Shielden

According to NEC Article 392.22, the fill area in ladder or ventilated trough cable trays generally must not exceed: 40% of the cross-sectional area for single-conductor or multi-conductor power cables



## Ultimate Guide to Cable Tray Selection - Types,

Learn how to choose the best cable tray system for your needs. Explore types, materials, installation tips, and NEC compliance in this expert guide.

## Cable Tray Fill Rules (NEC 392)

Cable tray types, NEC fill limits, single-conductor vs multiconductor differences, ampacity derating, and when to use cable tray vs conduit.



## Cable Tray Fill Rules (NEC 392)

This guide covers the cable tray types and their appropriate applications, the fill rules for each configuration, ampacity derating requirements,



## Cable Tray Installation Rules (NEC 392) - Electrical Trader

Senior Electrical Engineer Nadeem Sial explains: "The NEC 40% fill rule (NEC Article 392) states that for trays containing multiconductor power, lighting, or signal cables, the sum of the



### 5-INCH COLOR TOUCHSCREEN

Intuitive operation, easily accessible with just one touch

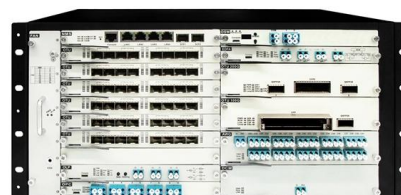


## 100+ Essential Questions Answered About Cable Trays:

Discover over 100 expert answers about cable trays, covering key topics like material selection, load capacity, installation methods, and maintenance.

## Flextray load and fill recommendations

The NEC rule requires that the cable cross-sectional areas together may not exceed 50% of the tray area (width x depth = fill). Cables will nearly completely fill the cable tray when reaching the 50%





## Cable Tray in Lab

The use of a cable tray barrier between power cables and non-cable tray rated instrumentation cables is not allowed. If electrical outlets are required in a conduit run associated with a cable tray, the conduit

## NEC Article 392 Guide: Ensuring Compliance for Cable

Master NEC Article 392 with our comprehensive guide. Learn essential cable tray requirements for installation, grounding, and fill capacity to



## Right Sizing Your Pathways--From Tray to Conduit

Right Sizing Your Pathways--From Tray to Conduit When it comes to pathways for communications cabling to get from one place to another, industry

## Cable Tray Technical Guide A practical guide to product selection and

Cable Tray Technical Guide A practical guide to product selection and installation This guide for engineers and installers has been developed by ABB as a practical reference regarding cable tray



### How full Cable Tray is full , Eng-Tips

How full Cable Tray is full ? The fundamental rules are mechanical forces defining Cable Tray Support and percentage of the cable fill (40-50% by NEC). Here in Canada is very important to



### NEC Standards for Cable Trays: Grounding, Fill Capacity

This article provides a comprehensive framework that governs various aspects of cable tray installations, including the types of cables that are deemed acceptable for use, requirements for



### Cable Tray Size Calculation for Project Engineers

Cable trays are essential for organizing and supporting electrical and communication cables, as well as assuring safe installations. Choosing the





## Cable Tray Fill Calculator , NEC 40% Rule , CalcShed

Free cable tray fill calculator to estimate tray fill percentage by tray width/depth and cable diameter/count. Includes a planning pass/high indicator.



## Cable Tray Technical Guide A practical guide to product selection and

In designing supports for a cable tray system, consideration should be given to the loads associated with future cable additions and any additional loading that may be applied to the cable tray system (e.g.,

## Cable Tray Fill Percentage Calculator

This article provides a detailed guide on cable tray fill percentage calculation, ensuring safe, efficient, and compliant electrical installations.



## Explaining NEC Article 392 on Cable Trays

NEC Article 392 explains cable trays, their components, appropriate wiring methods for cable trays, and instances where they are and are not



## GUIDE CABLE TRAYS TECHNICAL

In accordance with its continuous improvement policy, Legrand reserves the right to change the specifications and illustrations without notice. All illustrations, descriptions and technical information



## Types of Cable Typically Used in Cable Tray

Types of Cable Typically Used in Cable Tray The purpose of a cable tray system is to support, route, and protect cable as part of the cable management system.

## Contact Us

---

For datasheets, pricing, or custom telecom energy solutions, please visit:  
<https://koskolong.co.za>