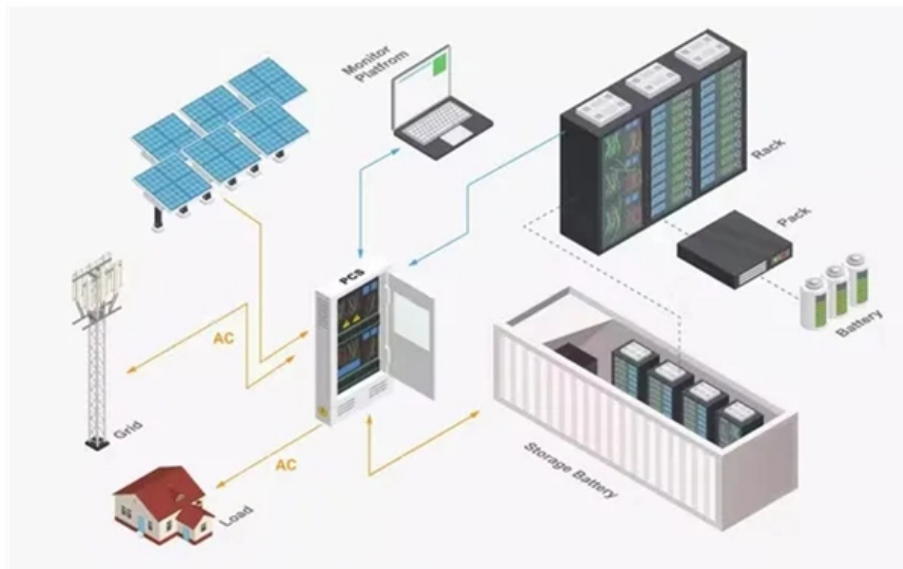




**Adam Tas Corridor Energy**

# What's inside a complete electrical distribution box





## Overview

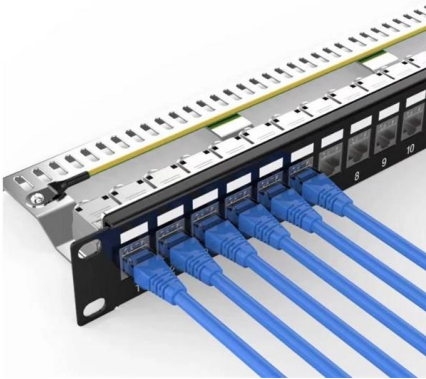
---

Inside, you'll find parts like circuit breakers and fuses that protect the system from problems like overloads and short circuits. The distribution box (DB box) helps safely and efficiently distribute electrical power. It's where power from the main supply splits into different circuits that feed lights, appliances, and equipment throughout the building. We also highlight how reliable manufacturers like NUOMAK support stable, compliant, and cost-effective power distribution.



## What s inside a complete electrical distribution box

---

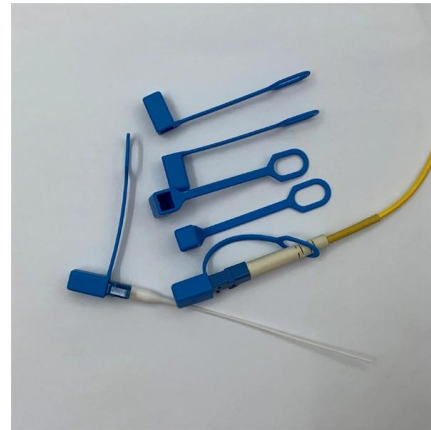


### What Is a Distribution Box?

Distribution boxes are commonly used in residential and commercial electrical systems. Also known as a distribution board, it's responsible for

### Distribution Boxes: Types and Functions

Inside a distribution box are components like circuit breakers, earth leakage units, doorbells, and timers. The building's electrical power enters

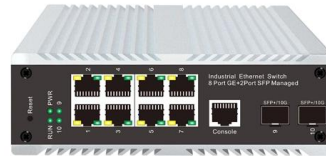


### The Complete Guide to Distribution Box: Installation, Types & More

Understanding the key components of a distribution box helps you make informed decisions about installation and maintenance. Each element plays a specific role in ensuring safe

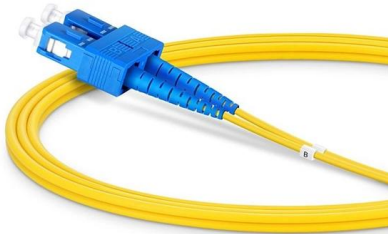
### What Is an Electrical Distribution Box and Why Is It

An electrical distribution box distributes power safely, prevents overloads, and protects circuits, ensuring efficient and reliable electrical systems.



## Explore Power Distribution Box Types and Functions

Distribution boxes vary in shape and structure due to different usage scenarios and requirements, but the basic components include fuses, circuit



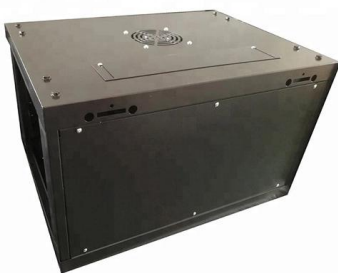
## Understanding Distribution Boxes: Your Guide to Power

What are Distribution Boxes and Their Importance? What are Distribution Boxes and Their Importance? Distribution boxes, or electrical junction



## Explore Power Distribution Box Types and Functions

Power distribution boxes are used in commercial and residential buildings and are part of the electrical system, also known as switchboards.





## How Does a Power Distribution Box Work

Learn how a power distribution box works step by step--from incoming power to circuit protection and smart monitoring--for safe, efficient electricity delivery.



## What Is an Electrical Distribution Box? A Complete Guide

It typically contains essential components such as circuit breakers, surge protectors, and grounding bus bars, ensuring safety and operational



## Understanding Distribution Boxes:A Comprehensive Guide

Understanding its significance, this article covers what a distribution box is, how it functions, its structure, the various types available, and how it



## What is an Electrical Distribution Box? A Comprehensive Guide

An electrical distribution box is often called the control hub of a building's electrical system, and for good reason. It's where power from the main supply splits into different circuits that



## A Step-by-Step Guide to Wiring an Electrical Panel Box

In the world of electrical installations, an electrical panel box is a crucial component that helps distribute electricity safely throughout a building. A wiring diagram is a



## Distribution Box: Types and Functions , Axis-Electricals

A distribution box ensures that electrical supply is distributed in the building, also known as a distribution board, panel board, breaker panel, or electric panel. It is

## Ultimate Guide To Distribution Boxes Db Boxes Types

This ultimate guide explains what a distribution box does, its internal components, common types, real-world applications, and how to select the right DB Box for



## Power Distribution Boxes Explained Simply

How Does a Power Distribution Box Work? A power distribution box acts like a traffic controller for electricity. It receives power from the main supply



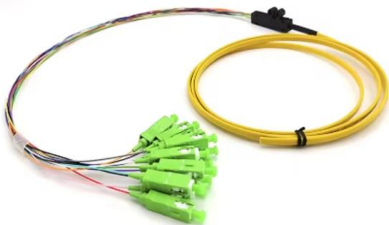
## About the Internal Structure and Basic Components of the Distribution

The electric distribution box is a low-voltage power distribution device that assembles switchgear, measuring instruments, protective appliances and auxiliary equipment in a closed or semi-closed



## Electrical Panel Box: Anatomy & How It Works , Penna

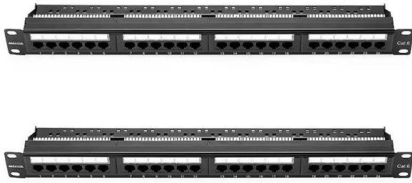
An electrical panel box or breaker box controls the entire electricity in your home, so it's important to know its components and how it works.



## Power Distribution Boxes Explained Simply

Learn what a power distribution box is, how it works, key components, types, and why it's vital for safe and efficient electrical systems.





## What is the Internal Structure of The Distribution Box

Learn about the internal structure of a distribution box, its components, functions, and key types. Understand its role in electrical systems and safety.

## DB BOX(Electrical Distribution Box): Everything You

Learn everything you need to know about the Electrical Distribution Box (DB Box). Explore types, materials, installation tips, etc.



## About the Internal Structure and Basic Components of the Distribution Box

Electric power distribution box and distribution cabinet, distribution panel, distribution panel, etc., are complete sets of equipment for centralized installation of switches, meters and other equipment. The

## What is the Function of a Distribution Box in Electrical Systems

The distribution box plays a crucial function in the distribution box of electrical systems. It helps electricity move safely to different circuits, ensuring that power is utilized efficiently. This box protects



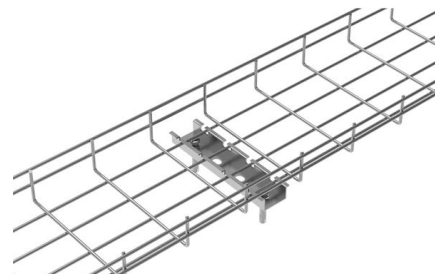
### Single Phase Distribution Box Definition and Main Parts

Definition A single phase distribution box is a main unit that controls electricity in your house or small business. This box helps you organize and manage the power going to different rooms and devices.



### Distribution Box Installation: A Complete Guide to Safe

The distribution box, often referred to as a breaker box, fuse box, or electrical panel, is a critical component of any electrical system. It acts as the central hub for



### Distribution Box Guide: Types, Components & Solutions

It acts as a protective enclosure that houses several key components, such as circuit breakers, fuses, and bus bars. These components work together





## Complete Guide For Distribution Boxes Types

Distribution boxes, also known as electrical distribution boards or panels, are pivotal components in electrical systems, ensuring the safe and organized distribution of

LoRawan outdoor base station



## Contact Us

---

For datasheets, pricing, or custom telecom energy solutions, please visit:  
<https://koskolong.co.za>