



Adam Tas Corridor Energy

What s needed to configure the core switch

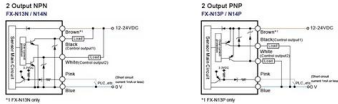




What s needed to configure the core switch

Core Switch vs. Distribution Switch vs. Access Switch

Owing to the importance of core switches, the quality and performance of the core network switches must be tested. To ensure that the switches can perform tasks



What is a Core Switch?

What is a Core Switch? A Deep Dive A core switch is the backbone of a network, providing high-speed switching for data packets between different network segments; essentially, it's



Core network components , Microsoft Learn

Core technologies and utilities for connecting your Windows-based computer with dissimilar systems for the purpose of sharing information. A

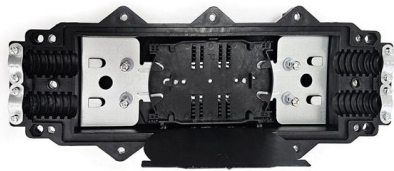


Introduction to Core Switch Configuration

A switch that functions as part of a router and operates at the third layer of the OSI network



standard model, the network layer. The most important purpose of the layer 3 switch is to speed up the data



How to Configure a Cisco Switch in 10 Steps

In this step-by-step guide, we walk you through configuring Cisco switches and look at some FAQs. Configuring a Cisco switch is a fundamental

Configuring the Core Switch

Configuring the Core Switch Context In this scenario, IP addresses of the interfaces connecting the core switch to the BRASs and firewalls and OSPF need to be configured on the core



Configuring the Core Switch

In this scenario, IP addresses of the interfaces connecting the core switch to the BRASs and firewalls and OSPF need to be configured on the core switch, so as to implement connectivity



Creating a Base Configuration for a Cisco IOS Switch: A Step-by-Step

Learn how to set up a base configuration for network switches. Secure, optimize, and enable remote access with our step-by-step guide.

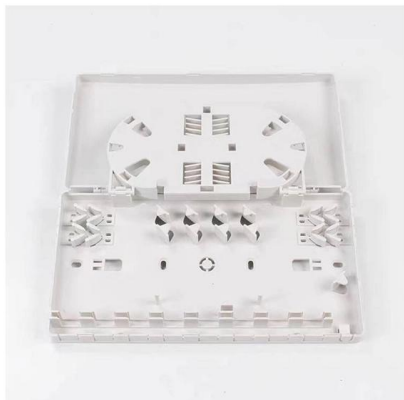
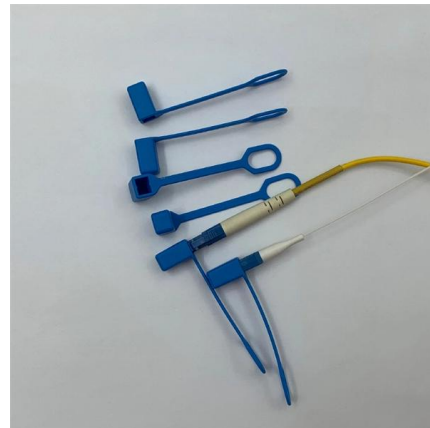


What Is a Core Switch in Networking?

Unlike access switches, which connect directly to end-user devices, the core switch focuses on aggregating and routing traffic between other

Understanding Core Switch: What It Is and How to

In the realm of system networking, three key types of switches are frequently mentioned: access switches, aggregation switches, and core switches.



ITPro Today, Network Computing, IoT World Today combine

ITPro Today, Network Computing and IoT World Today have combined with TechTarget . The page you are looking for may no longer exist.



Understanding the Core Switch: Key Differences and Uses

Explore the core switch's role as the backbone of your network. Discover key differences, uses, and insights into layer 3 core switch technology.



How to Configure a Cisco Switch , Step-by-Step Beginner's Guide

In this video, I'll show you how to configure a Cisco switch from scratch! Whether you're new to networking or need a refresher, this beginner-friendly tutorial walks you through the initial setup

Introduction to Core Switch Configuration

In this switching, transmission is determined not only by MAC address (layer 2 bridge) or source/destination address (layer 3 routing), but also by TCP/UDP (layer 4) using port Numbers that



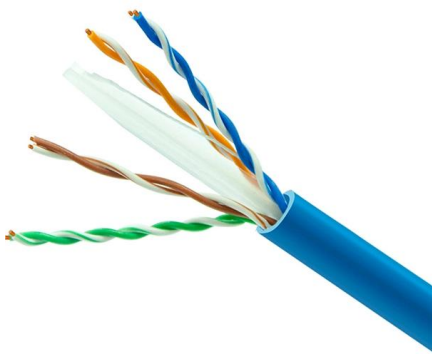
What is Core Switch and How to Choose-QSFPTEK

In this article, we will provide an overview of the core switch, its significance, and offer guidance on how to choose the right core switch for your



What Is a Core Switch?

Explore what a core switch does, why it's essential for enterprise networks, and how to choose the right model. Includes real-world applications and Cisco/Huawei/Aruba model comparison.



How to Configure a Cisco Switch: Basic CLI Setup Guide

Struggling with Cisco switch configuration? Learn console access, hostname, IP, VLANs, PoE, SSH, and saving configs -- all in one clear, step-by-step guide based on official Cisco practices

8 Steps to Configure Your Network Switch

Learn how to setup a network switch with ease. Switches allow you to send and receive information efficiently and securely. Get setup today!





Cisco configure VLAN on Core Switch

Cisco configure VLAN on Core Switch
InformationTechnologies Cambodia 1.19K subscribers
Subscribe

How to Configure Core Switch?

In this article, we will examine how to make basic settings on HP brand switches and backbone switches. Switch-PC connection can be done in 3 different ways.



What Is a Core Switch? Network Backbone Architecture Guide

Discover what a core switch does in a 3-tier network model. Learn about ASIC routing, collapsed core vs dedicated core topologies, and SMB sizing guides.

how to configure cisco core switch HSRP active active

In this video we will learn how to configure cisco core switch active active using HSRP step by step. In this LAB we practice on creating vlan, distribute vlan to other switch in our network



Why did xAI hand over a 220,000-GPU cluster to Anthropic? The

Jukan (@jukan05). 200 replies. Why did xAI hand over a 220,000-GPU cluster to Anthropic? The technical backdrop to xAI's decision to hand Colossus 1 over to Anthropic in its



How to Configure a Cisco Switch (step by step)

If you're looking to configure a switch for the first time, this post is for you. Learn step-by-step configuration commands for Cisco IOS Switches.



SME Network Solution Typical Configuration Examples

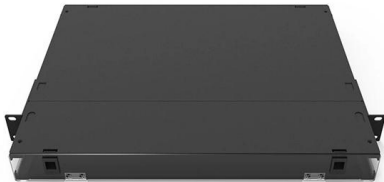
"Gateway + Core Switch + Aggregation Switch + Access Switch + WAC + AP" Networking: Local Entire Network Deployment (EasyWeb) "Gateway + Core Switch + Aggregation Switch + Access Switch +





What Is a Core Switch?

A core switch is the backbone of a large-scale network, designed to handle massive volumes of traffic with ultra-low latency and maximum reliability. Sitting at the top of the hierarchical model, core



What Is a Core Switch in a Network?

Define the core switch--the central, high-speed backbone required for aggregating and routing massive volumes of enterprise network traffic.

Contact Us

For datasheets, pricing, or custom telecom energy solutions, please visit:
<https://koskolong.co.za>