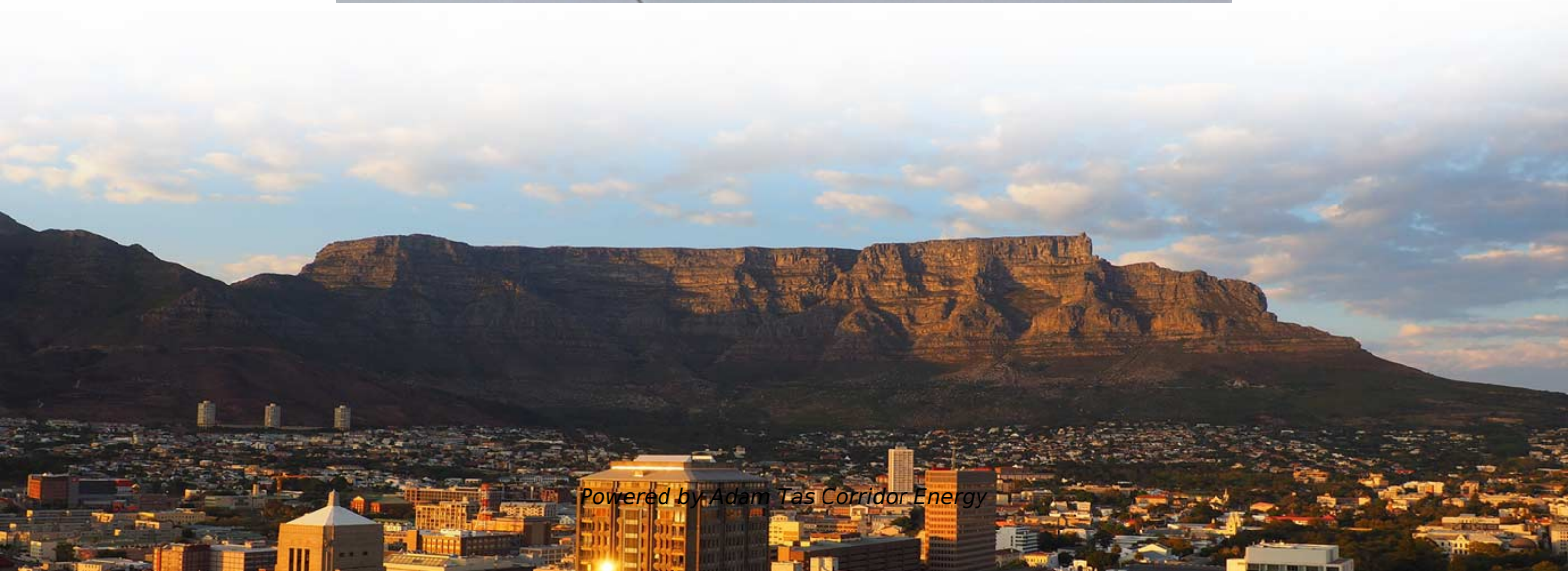




Adam Tas Corridor Energy

When cable trays are installed horizontally





Overview

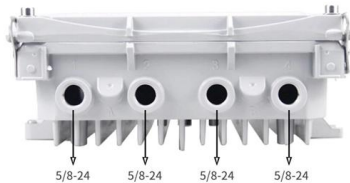
Spacing Standards: Electrical (power) and instrumentation (signal/control) cable trays should maintain a minimum vertical and horizontal distance. The spacing between trays, whether horizontal or vertical, depends on various factors like cable type, environment, and tray material. Proper installation can significantly reduce electromagnetic interference, prevent fire hazards, and improve overall efficiency. Cable trays play a vital role in supporting electrical cables and wires in commercial, industrial, and utility installations. When the cable tray is installed outdoors, the cable tray should be equipped with a.



When cable trays are installed horizontally

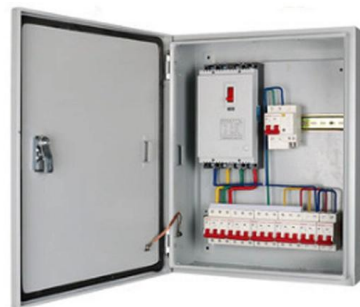
Safely Installing, Maintaining and Inspecting Cable Trays

Cable trays support cables across open spans in the same way that roadway bridges support traffic. Cable trays can provide a safe component of a power, low voltage control, data or



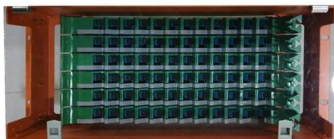
100+ Essential Questions Answered About Cable Trays:

Discover over 100 expert answers about cable trays, covering key topics like material selection, load capacity, installation methods, and maintenance.



CABLE TRAYS GENERAL INFORMATION AND

Using cable trays as walkways can cause personal injury and also damage cable tray and installed cables. Performances of cable tray systems are dependent on

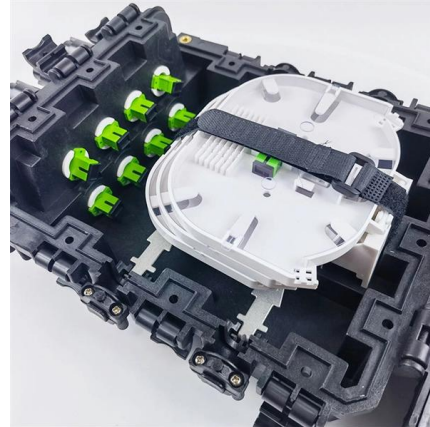


A Guide to Installing and Supporting Electrical Cable Trays

A professional guide to installing electrical cable tray systems per NEC Article 392. Covers



support, securing cables, and fill calculations.



Standard for installation of cable trays-Shandong Hongfeng Electric

The cable tray vendors should be installed firmly and horizontally and vertically. The left and right deviation of the support walking horizontally along the cable rack should be below

Precautions for Cable Tray Installation

When laid horizontally, at both ends of the cable, at bends, and at both ends of cable joints. We have summarized the precautions for cable tray installation to help



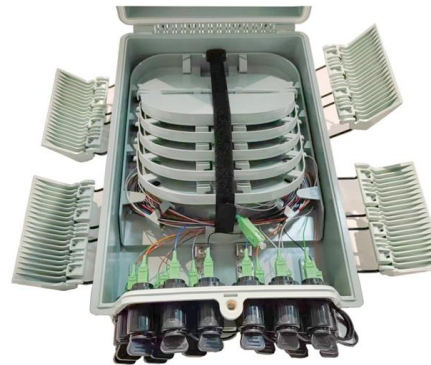
A Guide to Installing and Supporting Electrical Cable Trays

This guide covers the critical steps, from selecting the right electrical cable tray and performing accurate cable fill calculations to managing a safe cable pull through



Cable tray installation requirements- ZM Technology Co., Ltd.

As a supporting project of the wiring project, the cable tray has no special normative guidance, and the specifications and forms of various manufacturers lack universality.



Cable Tray Systems: Requirements and Best Practices

Comprehensive guide to cable tray systems requirements: tray types, materials, loading, supports, bonding, routing, and best practices for safe electrical cable management.

Guide to cable support systems

A cable support system consists of cable support lengths and system components, such as cable support fittings, support elements, mounting elements and system accessories. The cable support



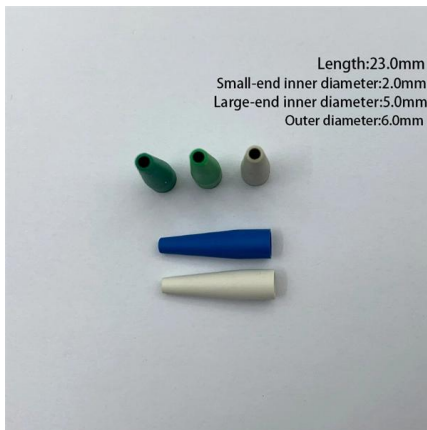
Cable Trays Installed Vertical In A Different Manner , Eng-Tips

But since the cable ties are not needed to maintain cable position, they don't tend to get over tightened by gorilla installers. If you just turn a horizontal tray on its side, the ties are all that



Master Cable Tray Installation: A Professional Step-by

Learn how to install cable trays for large-scale projects with our professional, step-by-step guide covering industry standards, safety protocols,



Cable tray manual

Nearly every aspect of cable tray design and installation has been explored for the use of the reader. If a topic has not been covered sufficiently to answer a specific question or if additional information is

How to Install Cable Tray: A Comprehensive Guide to Different Cable

Welcome to our step-by-step guide on installing cable trays! In this video, we'll explore the different types of cable trays available and provide detailed instructions for their installation.





Cable Tray and Conduit Installation Method Statement

Step-by-step cable tray and conduit installation method with safety, quality and inspection procedures as per IEEE standards.

Cable Tray Technical Guide A practical guide to product selection and

Cable tray length is selected based on the load to be supported, the distance between the supports (also referred to as the span), and handling and installation constraints.



Best Practice Guide to Cable Ladder and Cable Tray Systems

On many occasions cable ladder or cable tray is installed in circumstances where it will only ever carry a light cable load, possibly just one or two cables, and its main role is to physically secure and protect

Safety Distance Between Cable Trays: What You Need

What Is the Safety Distance Between Cable Trays and Ventilation Systems? Cable trays and ventilation systems must be installed with sufficient



Cable Tray Questions , Cable Tray Institute

What is your opinion regarding the maximum fill area for solid bottom channel, given that multiconductor or signal cables only are installed? Answer: The CTI has submitted a proposal to amend the



Method Statement installation of Cable Trays and Ladders

This method statement covers the site installation of the cable tray & ladders and the requirements of checks to be carried out.



Mesh door/glass door optional



Sp-601 glass door

Sp-602 mesh door

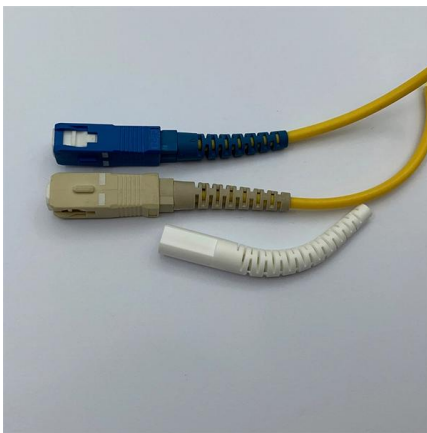
Core Principles for Electrical and Instrumentation Cable

Spacing Standards: Electrical (power) and instrumentation (signal/control) cable trays should maintain a minimum vertical and horizontal distance. Industry



Cable Tray Spacing Standards for Installation and Safety

Discover the essential cable tray spacing requirements for safe and efficient installation. Learn key standards, horizontal and vertical spacing, and more.



Best Practice Guide to Cable Ladder and Cable Tray Systems

Cable ladder systems and cable tray systems are designed for use as supports for cables and not as enclosures giving full mechanical protection. They are not intended to be used as ladders, walk ways

Vertical & Overhead Installation of Cable Trays and Wire Mesh

Yes, wire mesh baskets and cable trays can be installed vertically or overhead, and they absolutely should be in many cabling projects. Whether routing Cat 6 cables in a tight riser space or



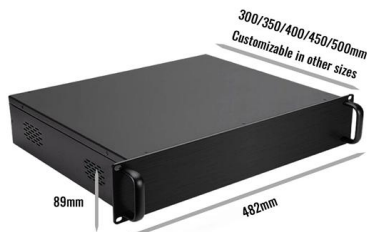
IEC Standard for Cable Tray: Complete Technical Guide

Trays should be installed with correct support spacing, using compatible accessories. Overloading must be avoided, and all bends or junctions



Best Practices for Installing Cables in Trays

Learn the best practices for installing cables in trays. This guide covers essential steps, technical requirements, and key details



Cable tray manual

Where cable tray wiring systems with current carrying conductors are installed in a dust environment, ladder type cable trays should be used since there is less surface area for dust buildup than in

Contact Us

For datasheets, pricing, or custom telecom energy solutions, please visit:
<https://koskolong.co.za>