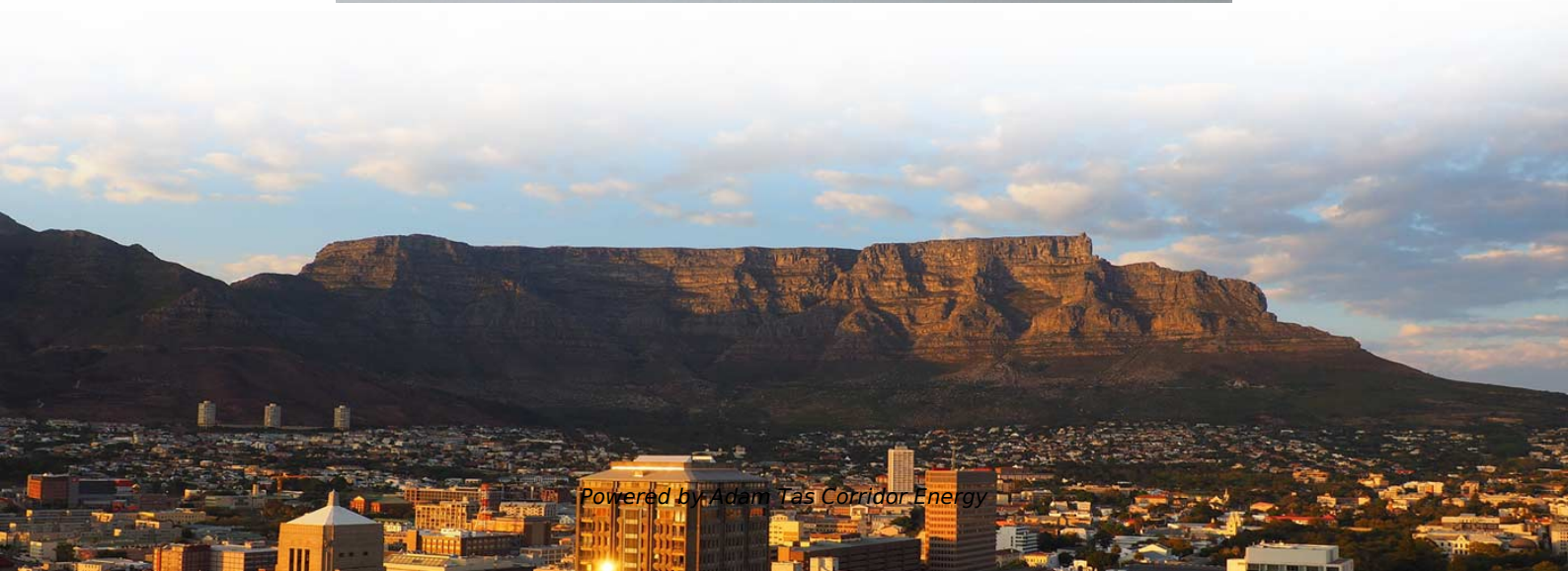




Adam Tas Corridor Energy

Where are distribution boxes most commonly used





Overview

They're commonly used for street lighting, outdoor events, and temporary power distribution. Proper installation of a distribution box requires careful planning and adherence to. It houses protective devices such as circuit breakers or fuses, ensuring both equipment protection and user safety. Think of them as traffic controllers for power—they direct energy where it needs to go while protecting against overloads or.



Where are distribution boxes most commonly used



Understanding Distribution Boxes: A Comprehensive Guide

A distribution boxes is an essential device that manages the safe and efficient flow of electrical power throughout different areas of a building or facility.

Understanding Power Distribution Boxes: Types, Features, and

Power distribution boxes are vital components in electrical systems, providing safe and efficient electricity distribution across various applications. With numerous types available, including



The Complete Guide to Distribution Box: Installation, Types & More

They're commonly used for street lighting, outdoor events, and temporary power distribution. These boxes must meet strict ingress protection standards to prevent water and dust



Understanding Distribution Boxes: A Comprehensive Guide

Distribution box What Is a Distribution Box Used For A distribution box is used to receive electrical



power from a main supply and distribute it to multiple branch circuits in a safe and

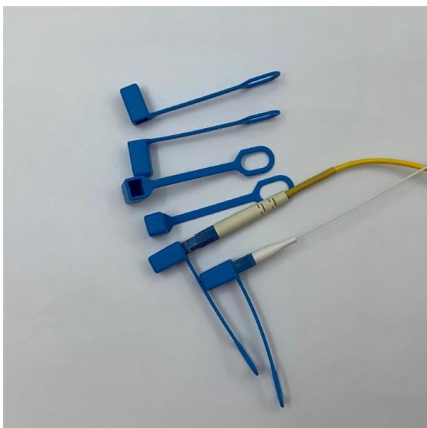
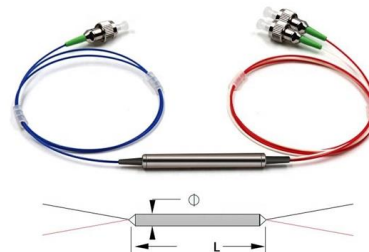


Power Distribution Boxes Explained Simply

Learn what a power distribution box is, how it works, key components, types, and why it's vital for safe and efficient electrical systems.

A Definitive Guide To Distribution Boxes

The distribution box acts as the center of power distribution, distributing electricity to all connected devices. A distribution box, also known as a distribution board, panel board, breaker



Distribution Boxes Types - The Complete Guide

A commonly used distribution box contains doorbells, earth leakage devices, timers, or contact breakers. However, the distribution boxes have



Distribution Box Guide: Types, Components & Solutions

Understand distribution boxes (DB boxes) in 5 minutes. Learn about types, components, functions, and uses. Find the perfect DB box for your needs.



Explore Power Distribution Box Types and Functions

Power distribution boxes are used in commercial and residential buildings and are part of the electrical system, also known as switchboards.

1. An Ultimate Guide for Metal Distribution Boxes

2) Plastic Distribution Boxes Made from PVC or fiberglass, these boxes are lightweight and non-conductive. Commonly used in residential and commercial



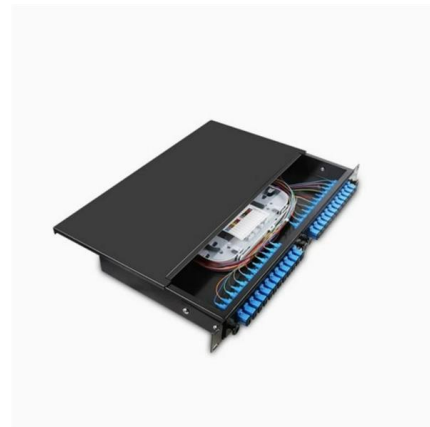
Comprehensive Understanding of Distribution Box

A distribution box helps manage electricity in homes or workplaces. It makes sure power flows safely and efficiently to devices. Let's look at its main jobs. Power distribution and circuit management The



Distribution Box Industry Comparison of Types and Uses

Compare types and uses of distribution boxes in the distribution box industry, covering residential, commercial, and industrial applications.



Ultimate Guide To Distribution Boxes Db Boxes Types

This ultimate guide explains what a distribution box does, its internal components, common types, real-world applications, and how to select the right DB Box for

Distribution Box Guide: Types, Components & Solutions

Distribution box 1-phase: Commonly used in residential applications, these are designed for lower power loads and typically feature fewer circuit





Distribution Boxes: Types and Functions

A distribution box (distribution board/DB box) distributes incoming power to multiple circuits and typically houses protective devices such as

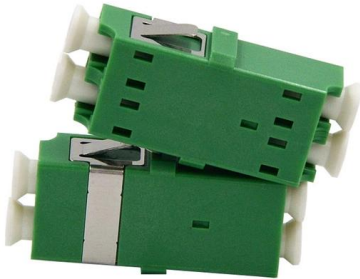
Distribution Boxes Explained: Types, Functions, and

Distribution boxes can be found in a range of sizes and shapes, designed to match the complexity and power needs of the building. Common



The Importance of Distribution Boxes in Electrical Systems

Learn more about how distribution boxes play a critical role in the safe and efficient operation of electrical systems.



Understanding Distribution Boxes: Your Guide to Power

Weatherproof Distribution Boxes These serve specific outdoor purposes, with rain, dust, and extreme temperatures sealed shut, protecting any



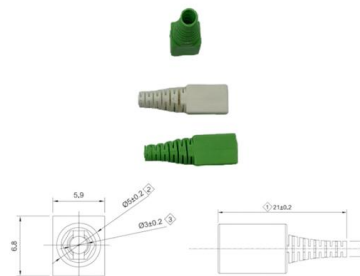
12 types of distribution boxes and how to choose them

In this guide, we'll break down the 12 main types of distribution boxes in a way that's easy to understand. We'll chat about what each one does, where it shines, and then dive into how to choose the perfect



What Is an Electrical Distribution Box? A Complete Guide

An electrical distribution box routes power, prevents overloads, and keeps wiring organised--essential for safe, efficient home and



What Are the Main Materials Used in Distribution Boxes

Mechanical Strength Installation and Cost FAQ
What is the most common material for distribution boxes? What makes polycarbonate a good choice for distribution





What Is a Distribution Box?

Distribution boxes are commonly used in residential and commercial electrical systems. Also known as a distribution board, it's responsible for

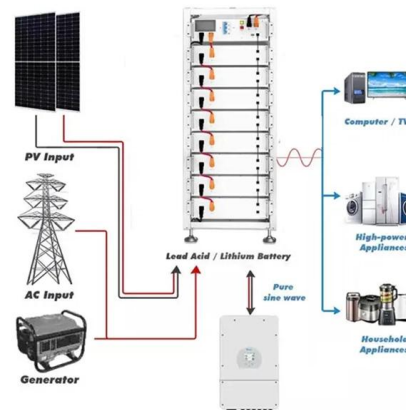


10 Distribution Board Types Explained [May 2026]

Key Takeaways A distribution board safely distributes electrical power from a main source to various circuits and areas within a building. There are 10

Power Distribution Box Essentials: Functions, Types

7) Considerations for choosing a power distribution box The context, security needs, and purpose all play a vital role in deciding a power distribution



Distribution Box: Types and Functions , Axis-Electricals

Type of Distribution Boxes Main Breaker Pane: The most commonly used type is the main breaker panel and is important to have in any property as it:



Contact Us

For datasheets, pricing, or custom telecom energy solutions, please visit:
<https://koskolong.co.za>