



Adam Tas Corridor Energy

Where are the fiber optic interface lights on the switch





Where are the fiber optic interface lights on the switch

Mesh door/glass door optional



Sp-601 glass door

Sp-602 mesh door

Understanding the LEDs

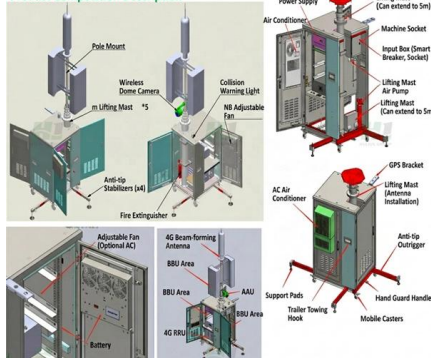
There is a blue beacon on the front and rear panel of the switch. The blue beacon on the front panel is a button labeled UID, and on the back panel it is a LED labeled BEACON.

Fiber port of switch does NOT working

Fiber cable is multi mode, LC-LC type (OM4 Duplex multimode, aqua color) and module is also multimode (Cisco GLC-SX-MMD). I also tried fiber patch cord (1,2 - 2,1 or 1,2 - 1,2), but still



Product Composition Description



View the Optical Module Status on a Switch through the

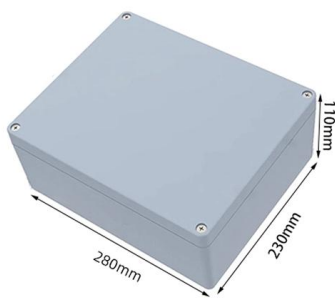
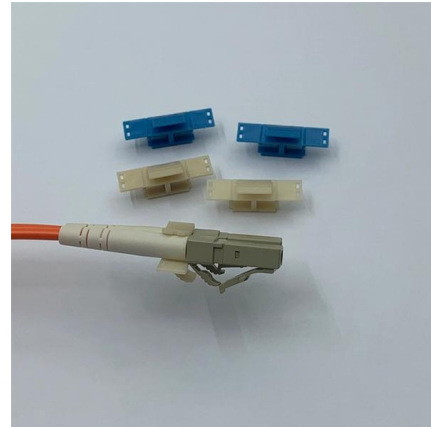
Once the transceiver and fiber optic cable are plugged in properly in the switch optical module, you should be able to view the current information for

How Are Network Switch Connect To Fiber

Learn how network switches connect to fiber optics for fast and reliable data transmission.



Understand the benefits and considerations of this

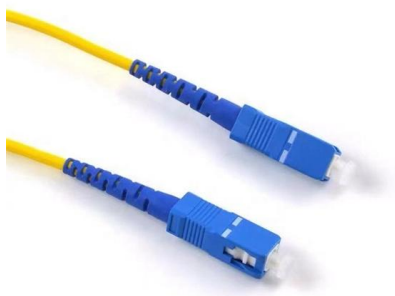


SCALANCE X-100 media converter

The device contains optical radiation sources which comply with the limits of Class 1 according to IEC 60825-1. Fiber-optic cables connected to these optical radiation sources may therefore be routed

How to check fiber ports in cisco switch?

Use the "show interface" command on the switch's command line interface (CLI) to display the status and statistics of the fiber ports. This command will provide



Troubleshooting Fiber Cables : r/networking

There is a single mode optical fiber cable in our datacenter going from a Cisco N5K to another N5K across different racks. The link appears to be dead and I'm hoping to fix it, but I have little to no



Interpreting LED activity

Figure 1 shows the LEDs on port side of the switch. The port status LEDs for the FC ports are arranged left and right to correspond to the upper and lower ports respectively in each pair.



Optical networks

An optical transport network is a high-speed communication system that sends light signals over fiber-optic cables to move large amounts of data across long

View the Optical Module Status on a Switch through the Command

Once the transceiver and fiber optic cable are plugged in properly in the switch optical module, you should be able to view the current information for the optical connection, which helps



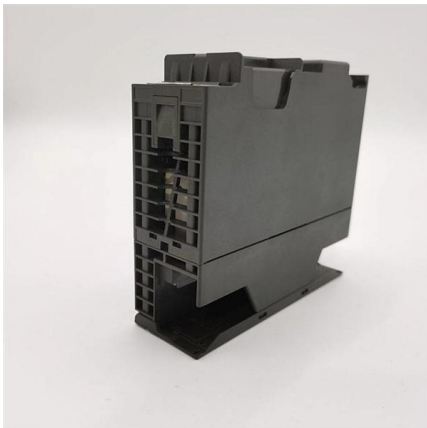
8 Fiber Port & 2 UTP lan port Fiber optic ethernet switch

Multi-gigabit optical aggregation series is my company based independent software research and development from a fiber aggregation switches, which have 8 *



Optical Transceiver Manufacturer, How To Check Optical

We will introduce how to query the information of optical module on Cisco switch. First, we need to connect to the network, and then log on to the management



Level Measurement Technologies

Hawk Measurement develops & manufactures level measurement, blocked chute detection, sonar interface sensing and fiber optic sensing solutions for industries

Troubleshoot Fiber Links on Catalyst 9000 Series Switches

Introduction This document describes how to troubleshoot fiber optic interfaces by addressing some of the fiber optic module and cabling specifications. Prerequisites Requirements



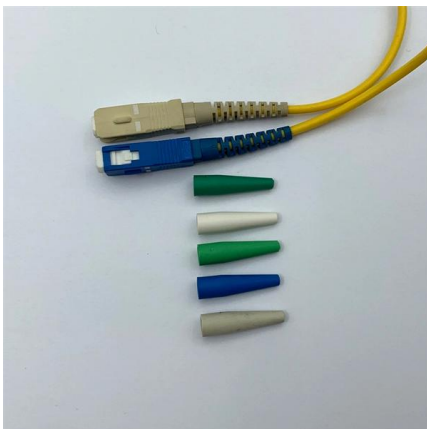


How To View Port Status And Optical Module Information On Cisco

Additionally, identifying module information helps detect coding compatibility between the module and the switch. The following introduces the specific operations to view the working status

Passive optical network

Passive optical network A fiber optic cable assembly with SC APC connectors, as commonly used to link optical network terminals to passive optical networks A



Optical fiber connector

An optical fiber connector is a device used to link optical fibers, facilitating the efficient transmission of light signals. An optical fiber connector enables quicker

How to check fiber cable in cisco switch?

Light Source Testing: Pair the optical power meter with a light source to test the entire length of the fiber optic cable for attenuation or signal loss. 3. Consult Cisco



Fiber-optic cable

A fiber-optic cable, also known as an optical-fiber cable, is an assembly similar to an electrical cable but containing one or more optical fibers that are used to carry



Single-mode optical fiber

In fiber-optic communication, a single-mode optical fiber, also known as fundamental- or mono-mode, is an optical fiber designed to carry only a single mode of light



ODVA fiber optic connectors: 2026 Buying Guide

Evaluate ODVA fiber optic connectors for FTTA, 5G-Advanced, and industrial edge networks. Analyze IP67/IP68 ratings, deployment trade-offs, and procurement criteria.





Understanding SFP Port: A Guide to Gigabit Ethernet

Q: What is an SFP Port? A: An SFP port is an interface used in networking devices, such as switches and routers, to connect to other devices



Fiber-optic Switches - technologies, performance

A fiber-optic switch is a device used in fiber optics to route light from one or more input fibers to one or more output fibers. It can act as a simple on/off switch or a

Interpreting Port-Side LEDs

The LEDs have three possible states: no light, a steady light, and a flashing light. Flashing lights may be slow, fast, or flickering. The lights are green or amber. Sometimes, the LEDs may flash any of the



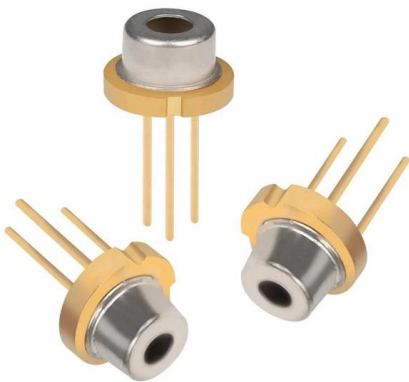
Visual Fault Locator Rechargeable Fiber Optic Green Light Pen 30MW

Wireless Smart Home Touch Wall Lamp Light Switch With Remote Control £10.30FREE Delivery
615 Digital Multimeter £18.98FREE Delivery PH
Electrode Probe 0-14 BNC Interface for Lab School



Solved: Testing fibre cables from a switch

There's nothing to test the fiber directly, other than a separate fiber tester device like a light meter or an OTDR. What is usually done is to compare



Lights on SFP on one side but not the other? : r/networking

Are you saying that the switch/transceiver reports that it is receiving light on the fiber being used for Rx? If light is getting from A to B on one fiber but not the other, it's very possible you have a dirt, dust, or

Lights on SFP on one side but not the other? : r/networking

Lights on SFP on one side but not the other? I am connecting 2 switches via SMF using SFP transceivers. One switch shows light when I plug in the fiber, but the other side doesn't. This seem to





G10 Mini Optical Power Meter

The G10 Mini Optical Power Meter is a compact, rechargeable device with universal FC/SC/ST ports seven wavelengths. Ideal for FTTX and network

Contact Us

For datasheets, pricing, or custom telecom energy solutions, please visit:
<https://koskolong.co.za>