



Adam Tas Corridor Energy

Where should the fiber optic router be placed





Where should the fiber optic router be placed



Where Is The Best Place To Put A Router? - Forbes Home

Looking for the best location to put your internet router? This guide will help you find the right spot for your home.

What is Broadband Bandwidth? UK Internet Speeds Explained

Wondering why the internet slows at peak times? Learn what broadband bandwidth is, how it differs from speed, and how much you need for your UK home.



Where to Place Your Router for the Best Wi-Fi Speeds

So, it's important to determine the best place for your router. Yes, Router Placement Matters It's tempting to stick your Wi-Fi router wherever you



Science-Backed Rules for Proper Router Placement

Numerous field tests in residential environments show 15-40% speed improvements simply from



elevating the router above waist height. Avoid corners

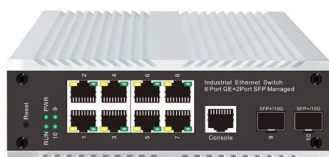


Guide to the Best Router Placement & Signals , BroadbandSearch

Best Place to Put Your Wi-Fi Router for Fast, Reliable Internet at Home From living rooms to basements, find out where your router should call home. Uncover the secrets to enhancing signal

How to Connect Fiber Optic Cable: Comprehensive Guide

Fiber optic cables are carefully laid out in a planned route that minimizes bends and avoids potential sources of damage like high-traffic areas or



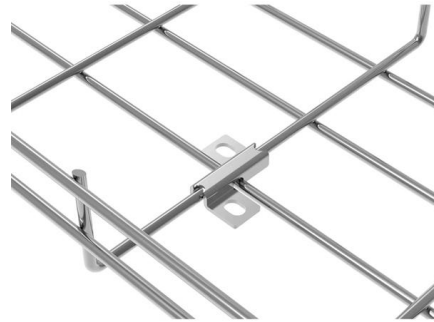
Reduce dead zones: How to set up a Wi-Fi router at home

How a mesh network improves Wi-Fi coverage If you've placed your router in the most optimal location and are still suffering dead zones and



Iran lawmaker calls for annual fees on fiber-optic cables crossing

Countries should pay Iran annual fees for fiber-optic cables that pass beneath the Strait of Hormuz, an Iranian lawmaker said, saying that hundreds of billions of dollars in financial transactions



Where Is the Best Place to Set Up Your Router?

Since you still want the router in the most central location, the best place for a router in a two-story home would be near the ceiling on the bottom

The Best Place to Put Your Router , EPB

The location of your router can have a direct impact on WiFi reception. Click [here](#) to learn how to find the best place to put your router for strong WiFi.



Science-Backed Rules for Proper Router Placement

This article breaks down scientifically validated rules for optimal router positioning, supported by engineering data, peer-reviewed studies, and practical



The Best Spot for Your Mesh Router for Full Home

Your router placement could be to blame. Whether you're using a single Wi-Fi router or a mesh network, it's essential to place your hardware correctly to enjoy the



Router Placement Guide: Where to Put Your Router for Best Signal

Learn exactly where to place your WiFi router for the strongest signal and best coverage. 10 placement tips with room diagrams and signal analysis.

Choosing the Best Spot for the Router in Your New House

Congratulations--you're about to move into the house of your dreams and connect to fiber optic internet. One of the next steps will be finding the best





How to place your wireless router for optimal reception

Place your wireless router in a central location. The router's impact on network speed is critical, so keep your router as close to the center of the

Master Your Fibre Optic Installation: Step-by-Step Best Practices

This comprehensive guide delves into the intricacies of fiber optic installation, exploring topics ranging from cable types and pre-installation considerations to execution, safety protocols,



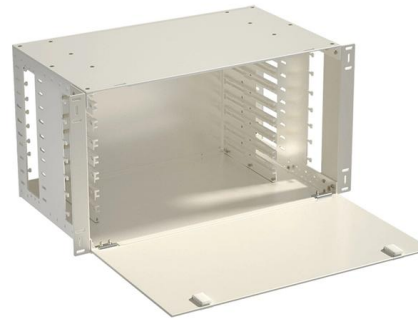
Fiber Internet Installation: Step-by-Step Guide (2026)

The optical network terminal (ONT) is the critical component that converts fiber optic signals into data your devices can use. Post-installation



The best place to put your router: 7 dos and don'ts

Knowing where in your house to place your router can be tricky, but don't panic. We've put together a list of top tips so you can make the most of your broadband



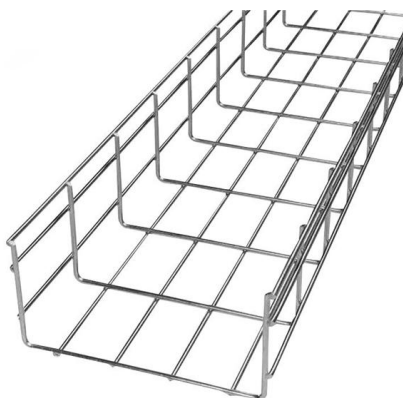
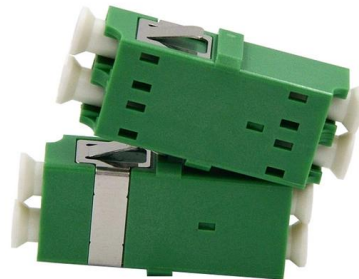
Fiber Optic Patch Panel Guide

Navigate 2026 network architectures with our definitive guide on selecting a fiber optic patch panel. Evaluate trade-offs, standards, and common buyer mistakes.



Optimizing Your Wi-Fi: The Ultimate Guide to Placing Your Modem and Router

It receives data from your ISP through a physical connection, such as a coaxial cable or fiber optic cable, and converts it into a digital signal that your devices can understand. In essence,



Where Is the Best Place to Set Up Your Router?

An ideal situation would be to have a direct line of sight between your device and the router. For devices in other rooms, you'll want to place the router



How to find the best place for your WiFi router

And if you need the fastest speeds in a specific room, our Fibre To Your Room (FTYR) option installs your router exactly where you want it. Enter your postcode here to see the fantastic full



I am just wondering which option is best for my router. I have fiber optic running into my modem in my basement utility room. About 1 foot away from that I have an Ethernet hub connecting

BeFibre Help Centre

Hier sollte eine Beschreibung angezeigt werden, diese Seite lässt dies jedoch nicht zu.

Motor protection controller



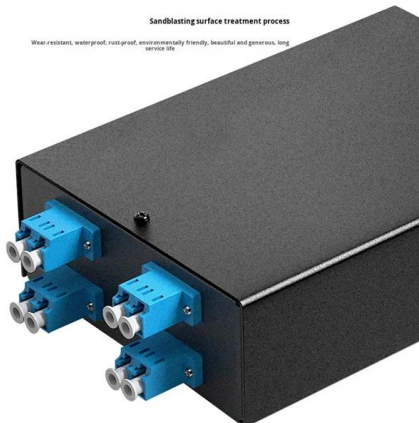
The best place to put your router

Position your router on a high shelf or mount it on a wall to reduce obstructions and improve signal reach. Wi-Fi signals travel best when they're not



Best Place for Your Router: Expert Tips for Stronger Wi-Fi

Learn the best places to put your router for faster, more reliable Wi-Fi. Discover expert tips to boost coverage, avoid dead zones, and optimize your

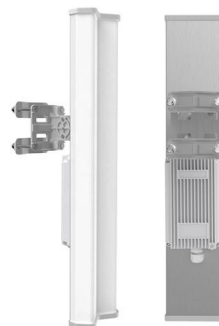


Where to Place Your Router for Best WiFi Coverage

Ideally, your router should be elevated -- on a high shelf, mounted on a wall, or placed on top of a bookcase. A height of 5-7 feet (1.5-2 meters) is optimal for most single-story homes.

What is the ideal location for a WiFi router?

In any case, the best alternative is usually the placement of a wired access point to the router, as this does not lead to a loss of speed and does not





Best Places to Put Your Wi-Fi Router , Allconnect



Tips on where to place your Wi-Fi router So, you don't have to be a rocket scientist or physicist to find the best place to put your router; however,

Contact Us

For datasheets, pricing, or custom telecom energy solutions, please visit:
<https://koskolong.co.za>