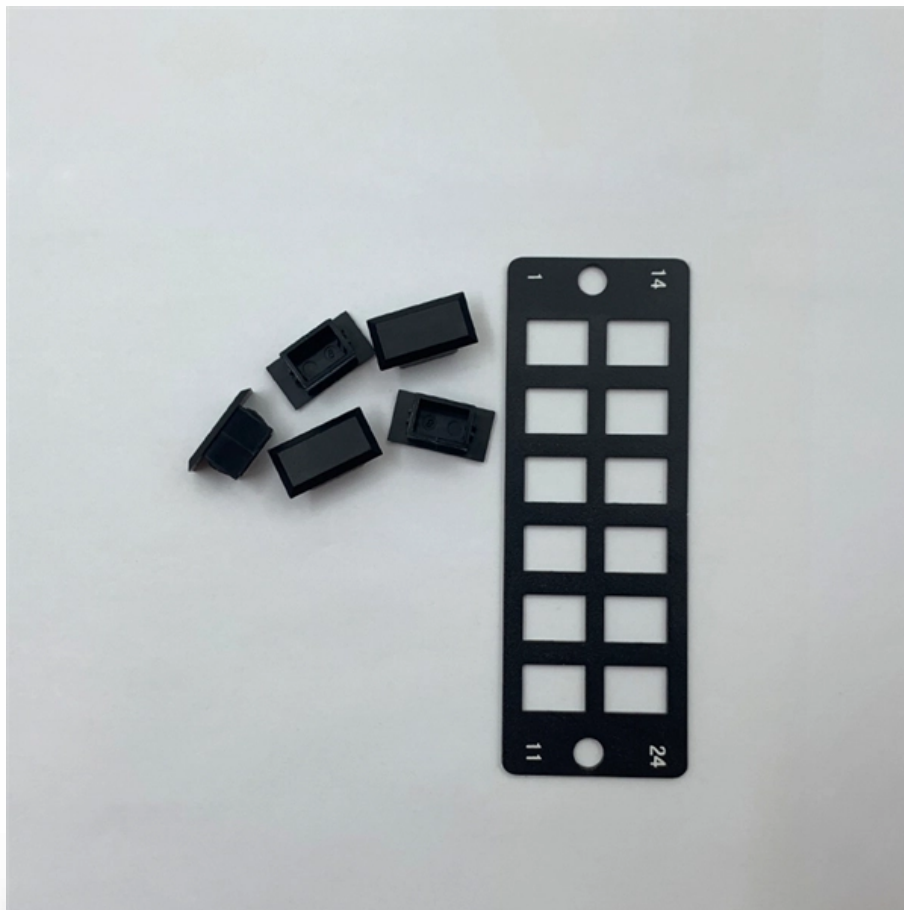




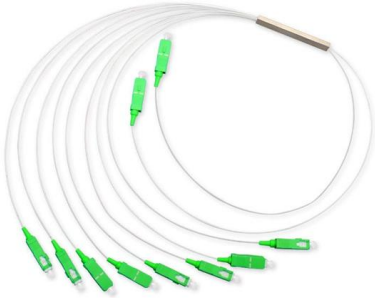
Adam Tas Corridor Energy

Where to buy an anti-tracking reconfigurable optical add-drop multiplexer





Where to buy an anti-tracking reconfigurable optical add-drop mult



Design and evaluation of a reconfigurable optical add

Space-division multiplexing (SDM) is expected to increase the capacity of photonic networks. Reconfigurable optical add-drop multiplexers

Introduction to Optical Add-Drop Multiplexer (OADM)

Optical add-drop multiplexer (OADM) is a device used in wavelength-division multiplexing (WDM) systems. "Add" and "drop" is a capability device to add one or more new wavelength



Reconfigurable optical add-drop multiplexers for hybrid mode

A reconfigurable optical add-drop multiplexer (ROADM) using special modal field redistribution is proposed and demonstrated to enable the selective access of any mode-/wavelength



Reconfigurable Optical Add/drop Multiplexer Using Optical Switches

In this study, we proposed a reconfigurable optical add/drop multiplexer (ROADM) by using



optical switches (SWs) and arrayed waveguide gratings (AWGs). By installing the corresponding SWs in the



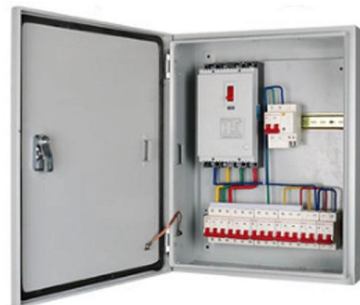
Optoplex 3 Port Tunable Filter

By combining its proprietary optical design and packaging technology with its state-of-the-art optical coating expertise and facility, Optoplex supplies DPSK



Understanding ROADM in DWDM Networks and Optical

What is ROADM? ROADM (Reconfigurable Optical Add-Drop Multiplexer) is a key component of optical transport networks (OTN / DWDM



ROADM: Reconfigurable Optical Add Drop Multiplexer

As you probably know, an Optical Add Drop Multiplexer (OADM) is used to combine, or multiplex, optical signals of different wavelengths. It's often referred to by its





ROADM

WSS ROADM providing highly flexible wavelength routing capabilities for mesh, ring, linear add/drop, core & edge DWDM network topologies.



Chapter 8, Reconfigurable Optical Add/Drop Cards

As a ROADM node, the ONS 15454 can be configured to add or drop individual optical channels using CTC, Cisco TransportPlanner, and CTM. ROADM functionality using the 32WSS-L card requires two

Four-channel optical add-drop multiplexer based on dual racetrack

In this paper we report on a four-channel optical add-drop multiplexer based on dual racetrack micro-ring resonators in submicron SOI rib waveguides.



DWDM Mux Demux Solutions , Wholesale Factory Supplier

What is an OADM module? An Optical Add/Drop Multiplexer (OADM) allows adding or dropping specific wavelengths from a DWDM link without demultiplexing all



Design of flexible and reconfigurable optical add/drop multiplexer

We present a two-way hitless reconfigurable optical add/drop multiplexer (ROADM) and an Optical Cross Connect (OXC) structures based on microring resonators (MRRs). The OXC is

Huijue engineering specific Fiber optic

HJ GROUP offers a wide variety of product types for you to choose from.



Fully reconfigurable optical add-drop multiplexer based on parallel

Reconfigurable optical add-drop multiplexer (ROADM) with the ability of dynamic configuration will be one of the core equipment for the future optical transport networks. This paper

Custom CWDM Optical Add Drop Multiplexer, Single

Compliant with ITU-T, it maximizes C-band capacity by allowing selected 20nm



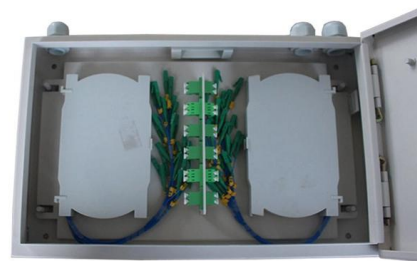


ROADM / TOADM 3-Port Reconfigurable Optical Add/Drop Multiplexer

Optoplex`s Reconfigurable Optical Add/Drop Multiplexer (ROADM) module, also known as Tunable Optical Add/Drop Multiplexer (TOADM), is based on a proprietary micro-optics and micro-actuator

A Flexible and Reconfigurable Optical Add-Drop Multiplexer for Mode

This fixed add/drop relationship severely limits the flexibility of the ROADMs and impedes the development of the on-chip optical networks.

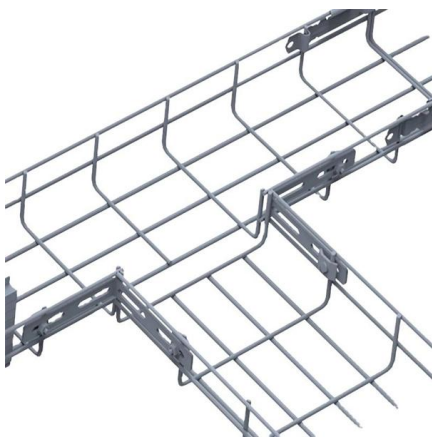


Design and evaluation of a reconfigurable optical add-drop multiplexer

Space-division multiplexing (SDM) is expected to increase the capacity of photonic networks. Reconfigurable optical add-drop multiplexers (ROADMs) for SDM-based networks must

Purchasing advisor for wavelength division multiplexing devices with

Purchasing Advisor for Wavelength Division Multiplexing Devices Find all you need for professionally buying wavelength division multiplexing devices: a comprehensive expert-curated directory of



FLEXOPTIX Homepage

I had a previous experience with both proprietary and generic transceivers/DAC, and I must admit that your hardware is doing great, everything feels very professional,

Design and evaluation of a reconfigurable optical add-drop multiplexer

Reconfigurable optical add-drop multiplexers (ROADMs) for SDM-based networks must have high scalability in terms of port count. However, the ROADM architecture adopted in present networks



Reconfigurable Optical Add Drop Multiplexer Market 2025

Reconfigurable Optical Add Drop Multiplexer Market size was valued at US\$ 487 million in 2024 and is projected to reach US\$ 934 million by 2032, at a CAGR of 9.6%





Implementation of an Elastic Reconfigurable Optical Add/Drop

We designed a Reconfigurable Optical Add/Drop Multiplexer (ROADM) based on a sub carrier add/drop node in an optical communication system that is suitable for all kinds of optical multiplexing signals.



ROADM / TOADM 3-Port Reconfigurable Optical Add/Drop Multiplexer

Cascading two ROADM modules, simultaneous add and drop functions can be achieved. Each single ROADM device is optimized to cover either C- or L-band wavelengths.

Optoplex 3 Port Tunable Filter

Optoplex's Reconfigurable Optical Add/Drop Multiplexer (ROADM) module, also known as Tunable Optical Add/Drop Multiplexer (TOADM), is based on a



Custom CWDM Optical Add Drop Multiplexer, Single

FS 1-4 channels single fiber CWDM OADM modules easily add or drop optical signals for CWDM network with intermediate sites that greatly saves fiber resources.



Reconfigurable Optical Add/Drop Multiplexer Wavelength Switch

The standard configuration supports up to 48 ITU channels with 100-GHz or 200-GHz spacing, with the option to add or drop up to any four channels at once. Extended versions covering the full C-band,



Polarization-independent rapidly tunable optical add-drop multiplexer

Tunable optical add-drop multiplexers (OADMs) are one of key enabling components for the implementation of reconfigurable optical networks . Various guided-wave filter approaches



Reconfigurable Optical Add-Drop Multiplexer Module

Reconfigurable optical add-drop multiplexer (ROADM) market to reach \$4.79 billion by 2030 at 14% CAGR, driven by growing high-speed internet demand.





Contact Us

For datasheets, pricing, or custom telecom energy solutions, please visit:
<https://koskolong.co.za>