



Adam Tas Corridor Energy

Where trough-type cable trays are needed





Overview

Trough type cable tray is a closed type of cable tray, usually used for laying electrical circuits, especially in situations where electrical circuits need to be protected and external factors need to be prevented from affecting them. maintain spacing or to keep cables in place when the tray is ect the minimum bend ra-dius for cables as they exit the bottom of the cable tray. A rung spacing of 6 to 9 inches (150 to 230 mm) is preferable when the cable tray cont d for instrumentation and control applications that require. Its unique design, featuring a solid bottom and side rails, makes it ideal for a wide range of applications, from industrial plants to. Cable tray (or cable ladder) systems are a popular alternative to electrical conduit systems, as they have an outstanding record for dependable service, design flexibility and cost savings in commercial and industrial applications.



Where trough-type cable trays are needed



Trough Type Cable Tray for Maximum Cable Protection

This guide is written to help you understand when trough type cable trays are the right choice, how they are designed, how to specify them correctly, and how they perform in real

Cable Tray Technical Guide A practical guide to product selection and

In designing supports for a cable tray system, consideration should be given to the loads associated with future cable additions and any additional loading that may be applied to the cable tray system (e.g.,



Top 7 Types of Cable Trays and Their Applications

Discover the top 7 types of cable trays including Ladder, Perforated, and Wire Mesh. Learn their applications and benefits for efficient cable

Where are trough-type cable trays generally used?

In general, trough type cable trays are mainly used to protect electrical circuits, provide safe



and reliable wiring methods, and are suitable for various scenarios, including indoor and



Types of Cable Trays: Benefits and Uses

Different types of cable trays offer key benefits, optimizing cable management and enhancing efficiency in electrical systems.



Explained: Cable Tray vs. Trunking - Know the

In summary, the choice between cable trays and trunkings depends largely on the specific requirements of the project, such as the type and quantity



Trough Type Cable Tray Guide: Load, Installation & Benefits

A professional guide to trough type cable trays. Explore load capacity charts, installation guidelines, advantages over ladder type, and key selection criteria for your project.





B-Line series Cable Tray Design Considerations

Our wind certification report provides you with list of acceptable B-Line series cable tray supports, fittings and covers based off of the environmental conditions, cable loading, and type of cable tray in your

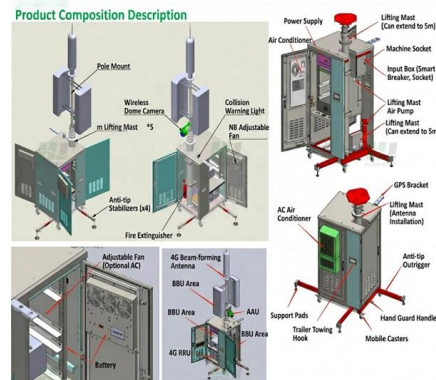


Types of Cable Trays - Advantages, Applications and Sizes

Explore the types of cable trays, their advantages, applications, and standard sizes. Learn how they improve cable management and support various industries.

What are the 5 basic cable tray types?

Cable trays are an essential component in electrical installations, providing a safe, efficient, and organized way to support and route cables. Understanding the different types of cable trays is crucial



Everything You Need to Know About Cable Trays , Cable Trays

Discover the different types of cable trays, their many benefits when used in electrical wiring and network cabling, installation processes, and essential maintenance tips for keeping your



How to Install Cable Tray: A Comprehensive Guide to Different Cable

Welcome to our step-by-step guide on installing cable trays! In this video, we'll explore the different types of cable trays available and provide detailed instructions for their installation.



Types of Cable Trays and Their Applications

Cable trays are an essential component in modern infrastructure, having numerous use cases in various industries. In this blog, we will discuss the

What Is A Cable Tray? 5 Types Of Cable Trays

A cable tray is a structural system used to support and manage electrical cables in various settings, such as industrial, commercial, and residential environments. It provides a pathway for safely routing





100+ Essential Questions Answered About Cable Trays:

Discover over 100 expert answers about cable trays, covering key topics like material selection, load capacity, installation methods, and maintenance.



What are Cable Trays? Everything you need to know

Discover everything about cable trays in industrial settings: types, benefits, installation tips, and compliance with NEC and fire resistance standards.



Cable Trays: How to Choose the Right Type for Your

Conclusion Cable trays are an essential component of any cable management system, providing support, protection, and organization for cables.



Cable Tray Technical Guide A practical guide to product selection and

Cable Tray Technical Guide A practical guide to product selection and installation This guide for engineers and installers has been developed by ABB as a practical reference regarding cable tray



Type of Tray Cable and Benefit of Cable Trays

Regardless of the type of tray cable you need for your job, the cable you will find at EWCS Wire will be of the highest quality - but more on that shortly. Advantages of Cable Trays Now

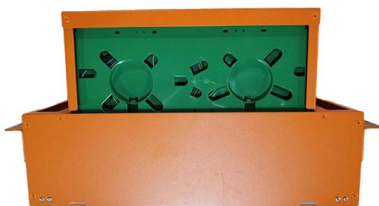
Premium Trough Type Cable Tray Systems

Discover high-quality trough type cable tray systems offering exceptional load capacity, superior cable protection, and flexible installation options for industrial, commercial, and data center applications.



Cable Tray Systems: Requirements and Best Practices

Comprehensive guide to cable tray systems requirements: tray types, materials, loading, supports, bonding, routing, and best practices for safe electrical cable management.





Ultimate Guide to Cable Tray Selection - Types,

Learn how to choose the best cable tray system for your needs. Explore types, materials, installation tips, and NEC compliance in this expert guide.

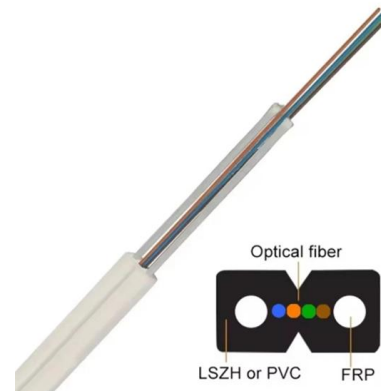


Cable Tray Systems: A Complete Guide to Types

Discover the essential guide to cable tray systems. Learn about ladder, trough, and wire mesh types, key components, and expert installation tips

Cable Tray Dimensions Guide: Standard Sizes, Tray

Perforated (also called trough) cable trays provide continuous bottom support with ventilation openings. They are commonly used where cable support



Contact Us

For datasheets, pricing, or custom telecom energy solutions, please visit:
<https://koskolong.co.za>