



Adam Tas Corridor Energy

Which is better a power distribution cabinet or a low-voltage wiring cabinet



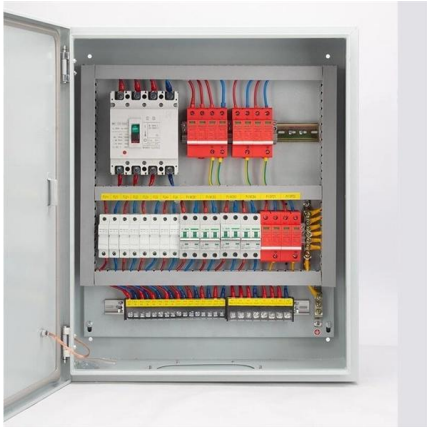


Overview

Distribution boxes generally experience lower failure rates in residential settings, while switchgear cabinets maintain operational stability under heavy industrial use. Among the various options available, two popular choices are the AC low-voltage distribution cabinet and traditional power panels. Electrical Requirements Rated Voltage – Commonly 380 V / 400 V / 415 V (3-phase), or match your system standard.



Which is better a power distribution cabinet or a low-voltage wiring



Power Distribution vs. Control Cabinets: What's the

Learn the key differences between power distribution and control cabinets. Explore functions, design considerations, standards, and applications in

Low Voltage Installation: Wiring & Cabling Full Guide

Low voltage wires are typically installed after the standard electrical wiring network is in place. Begin by selecting a suitable location for the control



What is the Difference Between the High and Low

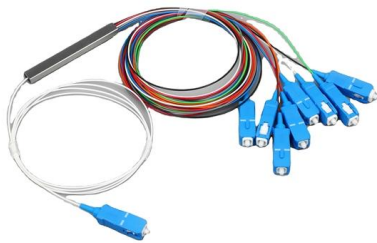
High and low voltage power distribution cabinets are power distribution equipment used for power distribution, control, metering, and connection of

Introduction of common low-voltage power distribution

Commonly used low-voltage power distribution cabinets include GGD, GCS, and GCK. 1, GGD low



voltage fixed switchgear This is the most common type of



Discussion on Electrical Design of Low-Voltage

Meta description: Guide to modern low-voltage distribution cabinet design, covering structure, circuit planning, component selection, and installation

A Beginner's Guide to Low-Voltage Switchgear: Basics

A low-voltage switchgear (LV) is a three-phase power distribution unit that can supply electric power at up to 1,000 volts and current at up to 6,000



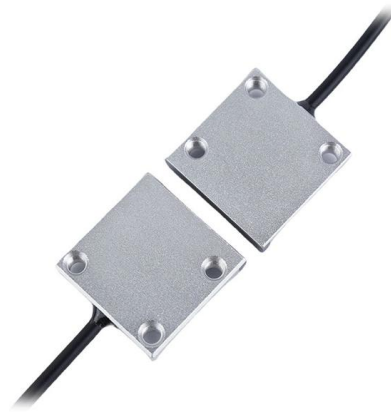
Low Voltage Distribution Cabinet Enclosure

Explore our Low Voltage Electrical Power Supply Distribution Switch Cabinet Enclosure, ideal for electricity boxes GGD, low voltage dual power switch cabinet



Optimal Selection of High and Low Voltage Distribution Cabinets in

Abstract: Based on the analysis of the main types and characteristics of high and low voltage distribution cabinets in distribution rooms, this paper discusses the basic principles for selecting these cabinets.

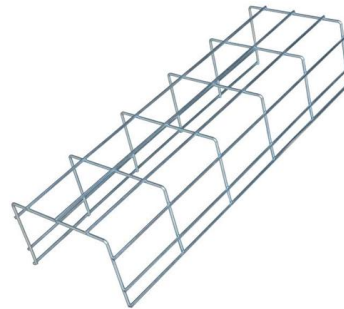


Incoming Cabinets: The First Line of Defense in Power Distribution

Discover the integral role of incoming cabinets in power distribution, ensuring stable and safe electrical supply. Learn about voltage regulation, circuit protection, and load balancing for

Everything You Need to Know About Low-Voltage Power Distribution Cabinets

A low-voltage power distribution cabinet, also known as a switchgear cabinet, is a crucial component of an electrical system that is responsible for distributing power from a main power



Low-Voltage Distribution Box vs Switchgear Cabinet: Key Differences

Understanding the differences between a Low-Voltage Distribution Box and a Switchgear Cabinet is crucial for selecting the right electrical solutions. In this article, we will explore their



What are low voltage electrical cabinets?

Jingjin is a trusted power distribution cabinets factory, offering high-quality and reliable solutions for managing and distributing electrical power in various industrial and commercial



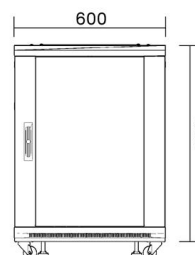
Understanding GGD Type AC Low Voltage Distribution

Low voltage distribution cabinets are important in providing electrical power without interruption to all circuits located within the building or facility.



AC Low-Voltage Distribution Cabinet vs. Traditional Power Panels:

In summary, the choice between an AC low-voltage distribution cabinet and a traditional power panel depends largely on your specific needs. If safety, efficiency, and scalability are your top



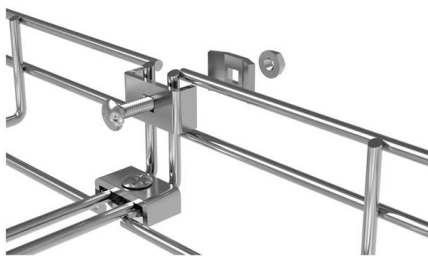


Axl Power Cabinet vs. Distribution Cabinet: What

Confused about Power Cabinet vs. Distribution Cabinet? This guide clarifies their functions, key differences, and introduces the high-performance Axl Power Cabinet for industrial

Low Voltage Distribution Cabinet vs. Traditional Panels: Which Wins?

While low voltage distribution cabinets offer enhanced safety and efficiency, traditional panels may still serve well in simpler applications. Understanding each option's strengths and limitations will help you

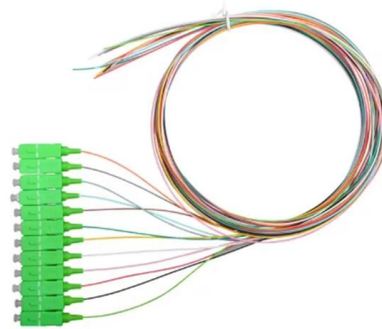


Efficient power distribution: A comprehensive selection from low

You should know about low-voltage, medium-voltage, and high-voltage electrical switchgear. Each type plays a crucial role in power distribution and keeps your equipment safe in its

Basics in low voltage distribution equipment

Low voltage distribution equipment typically operates at less than 600 volts; in contrast, medium voltage equipment affords a wider range of 600 to 38,000 volts. This paper provides a basic overview of the



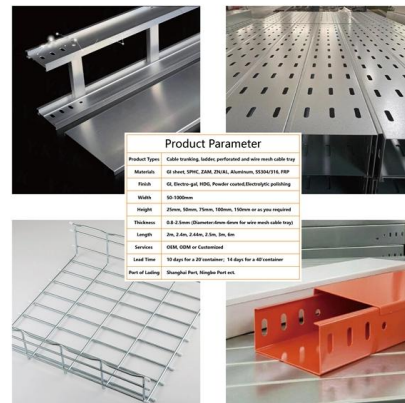
What is a Low Voltage Panel (Switchgear) Aktif Elektrotechnik

Learn what a low voltage panel is, explore its key components, safety standards, classifications, and discover the



Understanding Low Voltage Distribution Cabinets: Key Features & Uses

As electricity usage continues to grow, understanding the functionality of these cabinets is crucial for companies looking to optimize their electrical systems. Are you thinking of upgrading



Low Voltage Distribution Cabinet vs. Conventional Electrical Panels

If you require advanced features and enhanced safety for commercial or industrial applications, a low voltage distribution cabinet is ideal. Conversely, for simpler residential needs, a conventional





Choosing the Right LV Power Distribution: Switchboards

Power distribution systems are the backbone of modern infrastructure, and choosing the right equipment is essential for efficiency, safety, and reliability.

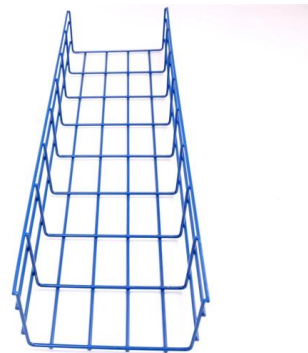


A Comprehensive Guide to Low-Voltage Distribution Cabinet Selection

Senior engineers provide an in-depth analysis of low-voltage distribution cabinets. Covering comparisons of mainstream models like GGD, GCS, and MNS, detailed copper busbar current

Power Distribution Cabinet - Types, Functions & Uses

FAQs About Power Distribution Cabinets What is a power distribution cabinet used for? It protects, controls, and distributes electricity safely. What are



how to choose low voltage power distribution cabinet

Choosing a low-voltage power distribution cabinet is similar to choosing GIS, but the focus is on load capacity, safety, and adaptability for low



Low Voltage Distribution Panel: Guide for LV Distribution

A low-voltage distribution panel is an electrical cabinet that receives low-voltage power from a main supply or transformer. It then routes power to downstream circuits through a controlled



Contact Us

For datasheets, pricing, or custom telecom energy solutions, please visit:
<https://koskolong.co.za>