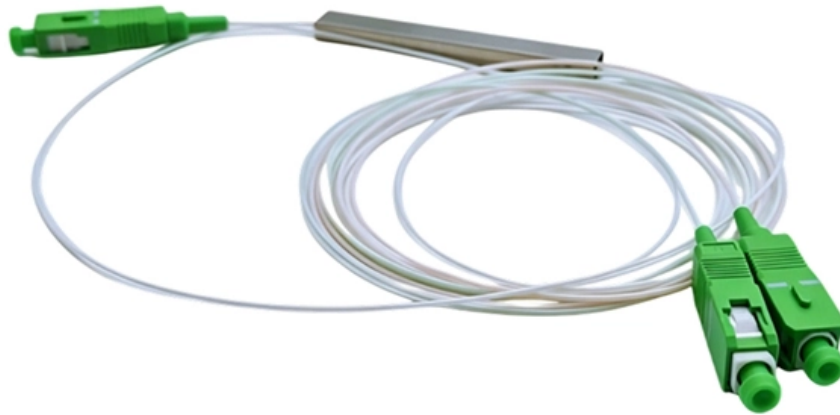




Adam Tas Corridor Energy

Which is better industrial-grade or enterprise-grade switches





Overview

Industrial-grade switches and enterprise-class switches exhibit notable differences in design philosophy, structural design and durability, data transmission performance and redundancy, anti-interference performance, advanced network functions and compatibility, as well. The following is a deep analysis of the differences between these two types of switches: 1. In many cases, the name of the switch will include the word "industrial" in it to identify its design intent. A network switch (also called switching hub, bridging hub, and, by the IEEE, MAC bridge) is networking hardware that connects devices on a computer network by using packet switching to receive and forward data to the destination device. Thus, industrial switches, which are specifically designed for particular environments, have emerged in the market.



Which is better industrial-grade or enterprise-grade switches

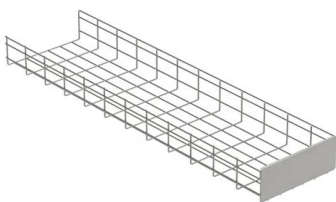


The difference between industrial-grade switches and enterprise-grade

Industrial-grade switches and enterprise-class switches exhibit notable differences in design philosophy, structural design and durability, data transmission performance and redundancy, anti-interference

Types of Industrial Grade Network Switches

Learn about L2 and L3 Industrial Grade Network Switches, PoE vs non-PoE types, and how to choose the right rugged switch for your



Industrial Switch vs Normal Switch, What's the Difference

What is an industrial ethernet switch? Struggling to choose between an industrial and a normal switch? This guide breaks down everything you need to know, from

The difference between industrial-grade switches and

Industrial-grade switches and enterprise-class switches exhibit notable differences in design



philosophy, structural design and durability, data transmission



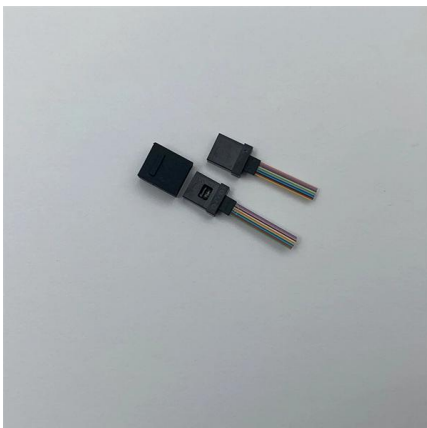
The difference between industrial-grade switches and ordinary switches

In terms of operating voltage, industrial-grade switches have a wide range of operating voltages, supporting DC12/24V, AC/DC85~265V wide voltage options, and even some models are limited to



Best Enterprise Switches 2025: Top 5 Network Switches

How to Evaluate Enterprise-Grade Managed Switches in 2025 An enterprise switch is a long-term investment in your network infrastructure. Use



Enterprise-grade vs Hardened-grade Ethernet Switches

Ethernet switches primarily fit into two categories: enterprise grade and hardened grade. Enterprise-grade switches are typically rack-mounted or



Enterprise vs Industrial Ethernet Switches , Antaira Technologies

Compared to an enterprise switch, the industrial switch will have a much wider operating temperature, higher ingress protection ratings of no less than IP30, and will use rugged metal shells instead of

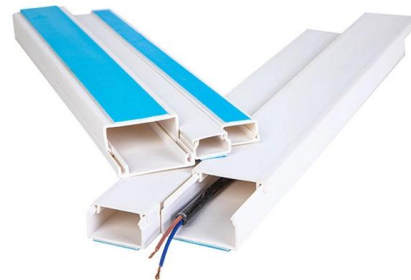


Industrial Ethernet Switch vs Commercial Switch: Key Differences

Learn the key differences between an industrial Ethernet switch and a commercial switch, including reliability, use cases, and network performance.

What types of industrial-grade switches are available?

Industrial-grade switches are specifically designed for demanding environments, offering features that ensure reliability, security, and longevity in harsh conditions.



Guide to implementing Industrial Grade Switches

However, implementing industrial grade switches is a complex process that requires careful consideration and planning. With detailed analysis



Enterprise vs Industrial Ethernet Switches , Antaira Technologies

Understanding Industrial Ethernet Switches If something similar to this has happened to you, it may be time to revisit the differences between industrial-grade these devices and enterprise-class Ethernet

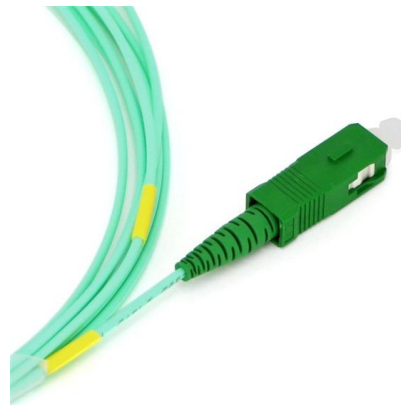


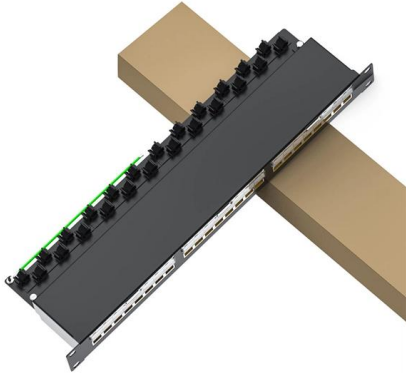
What Are the Differences Between Ordinary Switches and Industrial

Thus, industrial switches, which are specifically designed for particular environments, have emerged in the market. These switches are distinct from ordinary ones in terms of

Choosing the Right Enterprise-grade Switches for Business

Discover how to select the best enterprise-grade switches to optimize your network infrastructure. Enhance connectivity, security, and efficiency for your business.





Commercial Vs Industrial-Grade Switch, Which One

In this article, we will understand the difference between major types of switches like- Industrial-grade switches and Commercial switches. After reading this article, you

Best Enterprise Switches 2025: Top 5 Network Switches

This is a technical deep dive into the premier enterprise network switches defining 2025. We move beyond logos to compare the specific series

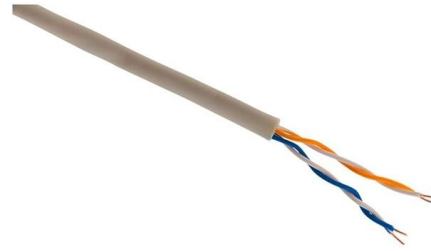


Finding the best network switch: 12 top brands for 2025

Finding the best network switch means choosing one that keeps your business fast, secure, and ready to grow. From high-performance ethernet

Enterprise Switches: Types & Their Selection Guide

Enterprise switches are the type of network switches, which are deployed in large networks comprising many connections. These switches do not



More products



Differences Between Industrial Ethernet Switches and Co

When users are purchasing network products such as Ethernet Switches, they are often confused about whether to choose industrial-grade or commercial-grade

The difference between industrial-grade switches and enterprise-grade

Industrial-grade switches and enterprise-class switches both play an important role in network infrastructure, but they have significant differences in design and functionality.



Application differences between industrial-grade switches and

Industrial-grade switches are mainly used in industrial automation, intelligent manufacturing, energy monitoring and other industrial fields, and need to operate stably for a long time in extreme harsh



Industrial Switches vs Commercial Switches

Industrial vs. Commercial switches compared. Learn differences in durability, usage, and applications for networking.



Application differences between industrial-grade switches and

From an application perspective, there are significant differences between industrial-grade switches and enterprise-grade switches in terms of application scenarios and requirements, network stability and

Contact Us

For datasheets, pricing, or custom telecom energy solutions, please visit:
<https://koskolong.co.za>