



Adam Tas Corridor Energy

Why aren't the cable tray elbows showing up in Revit





Overview

Users reported that cable tray Ladder-type fittings are not visible in the plan view and sections in Revit. To install a new version of your Autodesk software, open the Autodesk desktop app, sign. Noble Desktop's Revit MEP Certification Course covers Revit fundamentals — a strong foundation before specializing in mechanical. In other words, they're either too high or too low compared to the cut plane and the view depth. Here is the simple solution Create two type : 90 elbow and 45 elbow In the real world, to make a 45 elbow, we need two segments, to make a 90 elbow, we need three segments I've also tried to use some geometry forms in revit but no hope.



Why aren't the cable tray elbows showing up in Revit

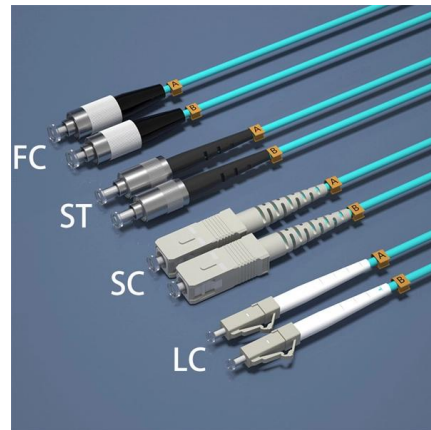


Setting IFC Material Overrides for Cable Tray and Conduit

How to set IFC material overrides for cable tray and conduit using Service Type, improve your exports with consistent data and automated materials.

Cable Tray Dimensions not showing up on Ribbon.

Cable Tray Dimensions not showing up on Ribbon. Hi All, I am currently using a cable dado trunking system family in my project. The Family



Cable Tray Fitting creation (Elbow Bend)

I am having a problem creating a cable tray fitting, I did the best I could (see attached), however still doesn't want to connect automatically. please help !!

Setting Up Cable Tray in Revit MEP: A Step-by-Step Guide

Walk through placing cable tray in Revit MEP--loading fittings, setting routing preferences,



drawing runs across floors, and resolving clashes with ducts and conduit.

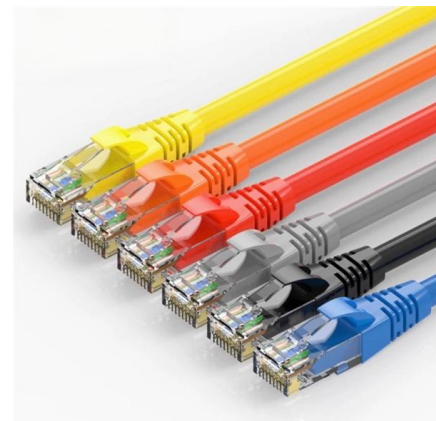


Cable tray not visible in plan region

Hi, I'm working with cable trays on Revit MEP 2017 and i have to draw a cable tray running at high level above the selected view range. In previous

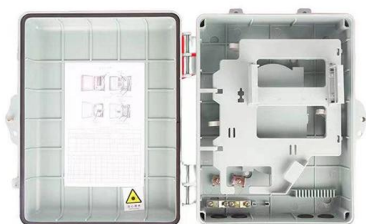
Help , Specific cable tray families are missing in Revit , Autodesk

Causes: System families are predefined in Revit and saved in templates and projects, not loaded into templates and projects from external files.



Revit Modifying Cable Tray runs and Justification

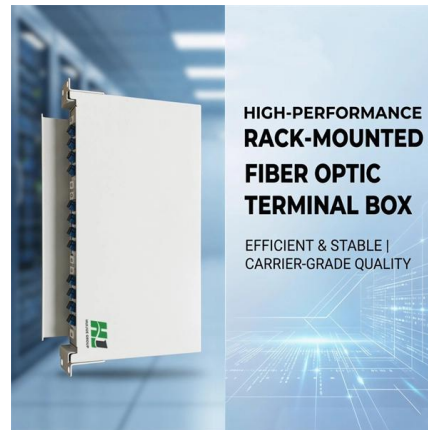
Change cable Tray type runs and justification. Use modify tools to edit runs extend to intersect.





Cable Tray Fitting creation (Elbow Bend)

Solved: I am having a problem creating a cable tray fitting, I did the best I could (see attached), however still doesn't want to connect



Revit: Element Visibility

Complete guide to Revit visibility problems: missing elements, view range, filters, worksets, and design options explained with step-by-step fixes.

Cable trays NOT automatically connecting

The cable trays aren't connecting no matter what angle I try to connect them and I am presented with the following error message in the image



Cable Tray and Conduit

Add Cable Tray Fittings As you draw cable tray, Revit automatically adds fittings. Use the following procedure to manually add cable tray fittings to an existing segment or run.



Cable trays sporadically disappear from views in Revit

Users reported that cable trays sporadically disappear from Revit views, while all other model elements are still displayed. Adjusting the view crop might make the cable trays reappear.

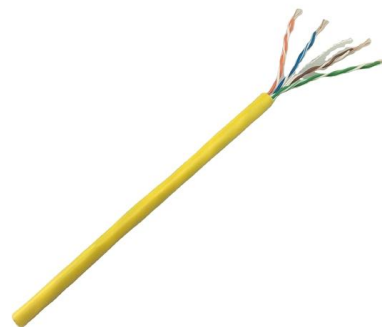


Specific Cable Tray Fitting Family not displayed in Revit

Solution: To enable the correct display, perform the following steps: In the project select the Cable Tray Fitting Family. Go to the Properties Dialog and turn off the "Use Annotation Scale"

Cable Tray Support Family Visibility Issue

Hello everyone, I have a cable tray support family with some nested brackets families inside of it, which I can control through visibility options.



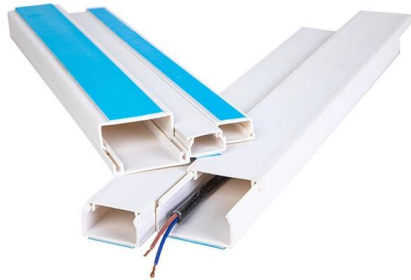


Display Cable tray fitting greyed out

In Revit 2016 - When we draw cable tray at the Floor level void, we could able to see cable tray correctly, but cable tray fittings are getting greyed

Specific cable tray families are missing in Revit

Specific cable tray families are missing in Revit. They do not appear in the library. System families are predefined in Revit and saved in templates and projects, not loaded into templates and



Cable trays sporadically disappear from views in Revit

Users reported that cable trays sporadically disappear from Revit views, while all other model elements are still displayed. Adjusting the view crop might make the cable trays reappear.

Display Cable tray fitting greyed out

In Revit 2016 - When we draw cable tray at the Floor level void, we could able to see cable tray correctly, but cable tray fittings are getting greyed out. We set the view range correctly.



Setting Up Cable Tray in Revit MEP: A Step-by-Step Guide

They may bring up a bundle of wires from the first floor--not necessarily in a cable tray--but they're going to need a cable tray here. So the first thing I'm going to do is actually go VV,

Cable tray ladder fittings not visible in plan view in Revit

Users reported that cable tray Ladder-type fittings are not visible in the plan view and sections in Revit. To install updates, open the Autodesk desktop app and click My Updates. To install



Learn REVIT Fast LRF-ELEC-01-03 - Cable Tray - Revit news

Don't start designing cable tray until your template, settings, and content are correct. This lesson sets the foundation for clean, automated routing with proper fittings in Revit Electrical.



Learn REVIT Fast LRF-ELEC-01-03 - Cable Tray - Revit news

Join this channel to get access to perks: Lesson Summary: LRF-ELEC-01-03 - Cable Tray in Revit Lesson Focus: This lesson walks through how to start a project and properly set up for Electrical



M& E items not visible outside building

They show as expected where they are above the floors inside the building (the same concrete floors as outside). They appear to stop at the edge of the slab. They also show as expected

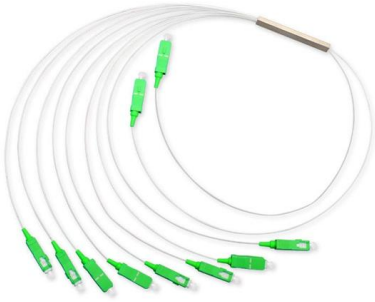
16 Revit Electrical , Cable Tray & Conduit System Design

In this tutorial, we will cover the Cable Tray & Conduit System Design in Revit Electrical. Learn how to efficiently model and route cable trays and conduits for an optimized electrical system



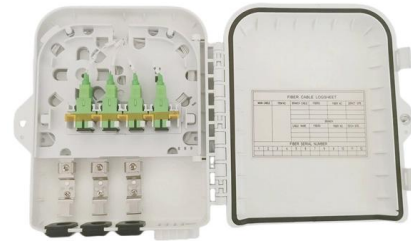
Plan region is not affecting display of MEP elements (duct, pipe

Issue: Users reported that the display of MEP elements (for example Cable Trays, Conduit, Duct, Pipe) are not being controlled by Plan Regions in Revit views. Note: This behavior is



Cable Tray Orientation and Fittings

Cable Tray Orientation and Fittings Here is an extra long post, seeing as I will be occupied with a training course the coming two days. In the overview of the Revit



Revit family will not show up on floorplan

I am unable to place cable tray in my project. However, it will show up in a 3D view and a section view just not in the floor plan (pictures below).

Contact Us

For datasheets, pricing, or custom telecom energy solutions, please visit:
<https://koskolong.co.za>