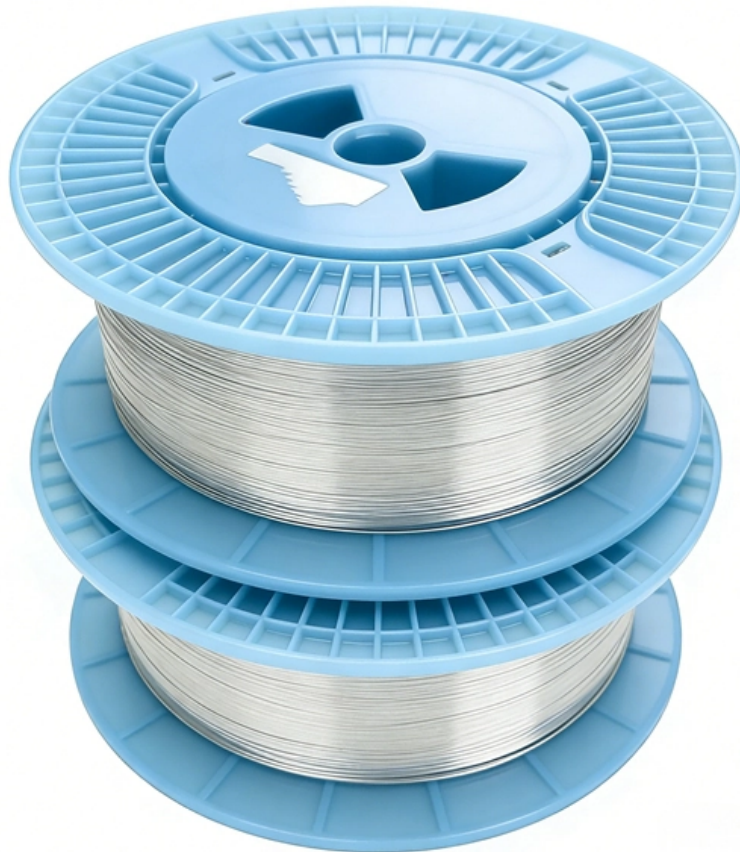




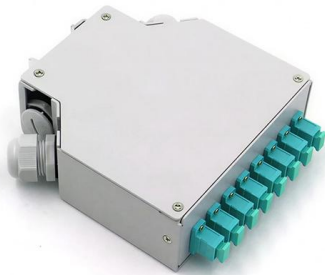
Adam Tas Corridor Energy

Why can't cable trays be welded with supports





Why can't cable trays be welded with supports



CABLE TRAY AND ELECTRICAL EQUIPMENT

Tools and equipment needed for cable tray support installation should be in good condition and must be checked by Supervisor / Safety Engineer prior to use in the

Cable Tray Support Weld Design Analysis , PDF

The document discusses the weld design for connections of different sized cable trays. It provides maximum and minimum force calculations for beams of various



welding circuits and a designated ladder cable tray requirements

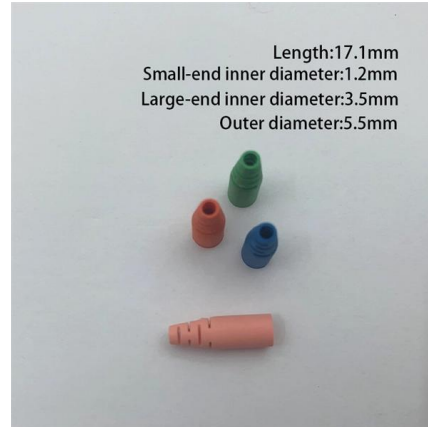
Hi, NEC 2011, article 630.41 and 392.10 (B)(1)(b) requires for welding cable to be run on a dedicated cable tray. My question: i have and MCC which supply power to the 63 Amps welding

CABLE TRAYS GENERAL INFORMATION AND

Cable tray systems are to be installed so they are accessible. If possible 300mm minimum



should be left above or between installed systems to allow for cable



Unistrut Cable Tray Support Structures

Cable Tray systems are often used to support electric power, signal, control, instrumentation, and communication cables used for power distribution and

GUIDE CABLE TRAYS TECHNICAL

NEMA VE 1-2017 Specifies requirements for metal cable trays and associated fittings designed for use in accordance with the rules of Canadian Electrical Code, Part I and the National Electrical Code®



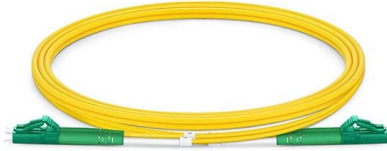
Cable Trays

Cable trays are systems that distribute bundles of insulated electrical cables from power supplies to electrical equipment, consisting of metallic trays supported from structures like walls and ceilings.



Mastering Cable Tray Welding: Tips for Seamless Installations

Cable tray welding is essential for ensuring the structural stability of cable tray systems in industrial and commercial wiring setups. This process involves joining metal components to create a robust support



Cable Tray Systems: Requirements and Best Practices

Comprehensive guide to cable tray systems requirements: tray types, materials, loading, supports, bonding, routing, and best practices for safe electrical cable management.

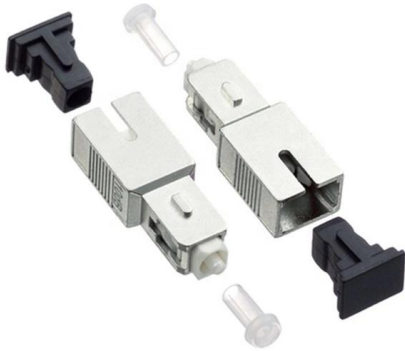
Cable Tray Installations Can Be Tricky: Definitions make

Many electrical professionals believe that cable trays are raceways. Based on the definition, this couldn't be further from the truth.



Welded Wire Mesh Cable Tray Engineering Guide: Data

Unlike enclosed trays, their lattice design enables superior airflow, making them ideal for heat-sensitive environments like data centers and industrial



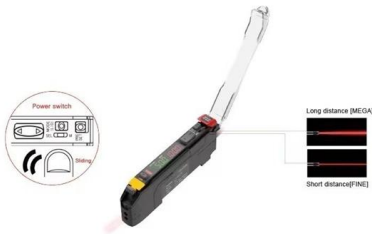
Cable Tray Technical Guide A practical guide to product selection and

SOLID-BOTTOM CABLE TRAY Providing additional cable protection, solid-bottom cable tray is sometimes preferred to support and protect numerous small instrumentation and control cables.



Best Practice Guide to Cable Ladder and Cable Tray Systems

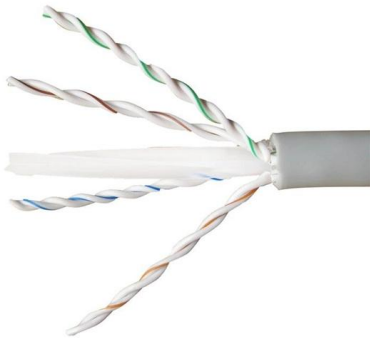
Where cable ladder and cable tray support systems are fixed to primary supports (e.g. structural steel work or elements of the building) it is important to ensure that the primary supports are strong



Cable Tray Questions , Cable Tray Institute

Answer: No. Cable trays are a support system for electrical cables, power, signal, and communication and optical fiber cables. NEC section 300-8 does not permit any tube, pipe, or equal for water, air





Best Practice Guide to Cable Ladder and Cable Tray Systems

Cable ladder systems and cable tray systems are designed for use as supports for cables and not as enclosures giving full mechanical protection. They are not intended to be used as ladders, walk ways

What Are Cable Trays and How Do They Work?

Essential Roles in Infrastructure Cable trays are deployed in large-scale settings where a high volume of cables must be managed efficiently over long distances. They are common in industrial environments



Precautions for Cable Tray Installation

Cable Tray Installation Guide The correct installation of cable trays is crucial for establishing a reliable and efficient cable system. It ensures that cables are

Appendix 3F Cable Trays and Cable Tray Supports

Cable trays and their supports are designed to maintain structural integrity. The stresses are maintained within the allowable limits as specified in subsection 3f.3.3.



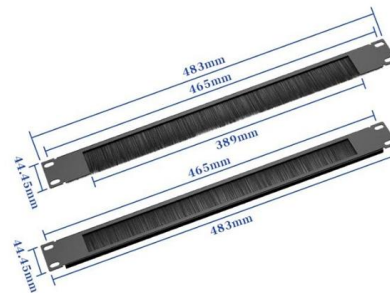
- IP65/IP55 OUTDOOR CABINET
- WATERPROOF OUTDOOR CABINET
- 42U/27U
- OUTDOOR BATTERY CABINET

welding circuits and a designated ladder cable tray requirements

The NEC Articles referenced are for 'Welding Cable' not necessarily the feeders for the welding machines. Welding cable must be installed as noted, but you certainly don't have to use

How to Fix Common Cable Management Issues using

Discover common cable management problems and how cable tray accessories effectively solve them to ensure safety and performance.



CABLE TRAY AND ELECTRICAL EQUIPMENT

Self standing support for cable tray shall be made of steel channel vertically installed and supported with concrete foundation, anchor bolt grouting, etc. Welding of



Cable Tray Technical Guide A practical guide to product selection and

Cable tray is considered to be a system. It must provide continuous support for cables, and the electrical continuity of the cable tray system must be maintained.



A Guide to Installing and Supporting Electrical Cable Trays

A professional guide to installing electrical cable tray systems per NEC Article 392. Covers support, securing cables, and fill calculations.

Connecting Cable Trays: Your Guide to Secure and

Learn common methods for connecting cable trays safely and efficiently. Our guide covers splice plates, quick-connects, and key tips for secure



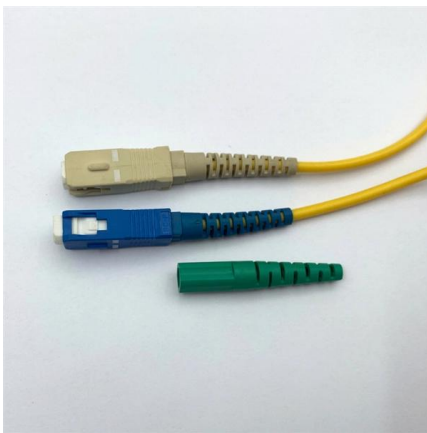
Types of Cable Trays: Ladder, Perforated, Basket, Solid

Cable trays support insulated electrical cables in industrial and commercial settings. There are several types of cable trays, including ladder,



7 Types of Cable Trays: How to Choose the Right One

Cable tray systems are engineered support structures designed to route, support, and protect insulated electrical cables used for power distribution,



Common Issues in Steel Cable Tray Installations

This article delves into typical troubleshooting scenarios encountered with cable tray systems, highlighting practical prevention methods and best

Cable tray support and its welding method

As described above, the cable tray support and the welding method according to an embodiment of the present invention can weld the welding area by the operator alone while the joint



Types of Cable Trays: Benefits and Uses

Different types of cable trays offer key benefits, optimizing cable management and enhancing efficiency in electrical systems.



Contact Us

For datasheets, pricing, or custom telecom energy solutions, please visit:
<https://koskolong.co.za>