



Adam Tas Corridor Energy

Why do computer rooms need hot aisles





Overview

In modern data centers—especially those with high-density loads— hot aisle containment is generally preferred due to its superior efficiency and performance. Impact on Energy, Cost, and Performance Airflow management is not just a design detail—it has measurable impacts across the. Hot air is concentrated in this aisle and directed back toward the cooling system. Because the computer room uses the hot aisle and cold aisle to change the previous practice of placing the cabinets in the same direction in the data center, the "face-to-face, back-to-back" cabinet placement method is adopted, which is in line with the server and other IT equipment. However, because every computer room is unique, there is no one definitive solution.



Why do computer rooms need hot aisles

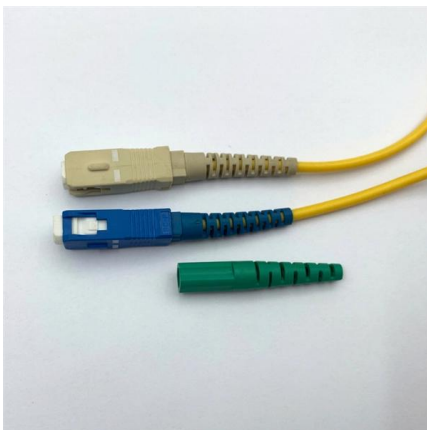


Hot Aisle Containment , Legrand

By channeling hot exhaust away from equipment and toward cooling, data centers can maintain a stable operating temperature and reduce operational costs. Benefits: Increased Energy Efficiency: By

Optimizing Data Center Cooling: The Power Of Hot And

Discover how to optimize your data center cooling system with hot and cold aisle containment. Learn about the assessment, design, installation, and

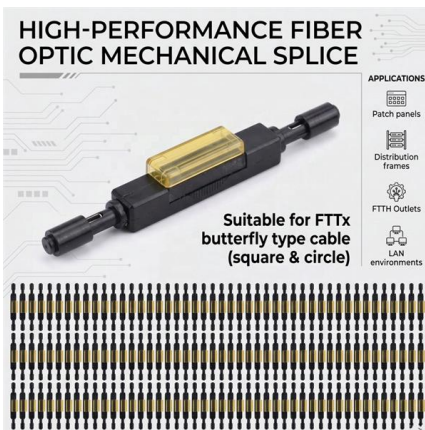
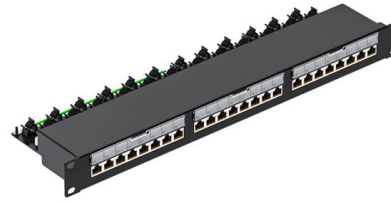


Data Center Design: Hot Aisle & Cold Aisle - Length

Efficient airflow management in data centers relies heavily on proper Hot Aisle and Cold Aisle configurations. To maintain thermal performance, equipment

Hot Aisle Containment Explained

Table of Contents If you've ever walked into an old-school server room, you understand the amount of heat that servers, storage, and



Move to a Hot Aisle/Cold Aisle Layout

The hot aisle/cold aisle layout helps prevent cold "supply" air from mixing with hot exhaust air, resulting in cooling savings from 10 to 35 percent. 3 More efficient

Cold & Hot Aisle Containment For Data Center Efficiency

Without containment, server inlet temperatures can vary significantly across the room. Containment delivers uniform temperatures to all server inlets,

STAINLESS STEEL WIRE MESH

- Long-lasting and durable
- Comprehensive specifications
- Customized non-standard products



Data Center Temperature: Hot And Cold Aisle Containment

Q3: Can hot and cold aisle containment save on energy costs? A3: Yes, hot and cold aisle containment can significantly reduce energy costs by



Why should the computer room design hot and cold aisles?

The airflow organization in the equipment room completes the isolation of cold and hot aisles, which maximizes energy efficiency and achieves the purpose of



Why should the computer room design hot and cold aisles?

The long arrangement of cabinets also provides conditions for low-cost handling of the isolation of hot and cold aisles. The airflow organization in the equipment

Hot Aisle Containment (HAC) for Data Centers Explained

Need help planning your data center infrastructure? Learn more with C& C's resources! Is Hot Aisle Containment Right for You? Hot aisle containment



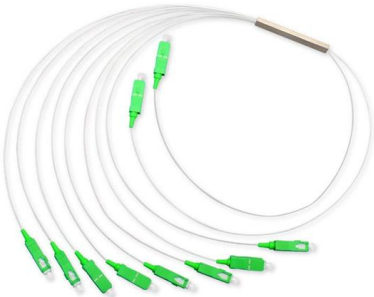
Hot Aisle / Cold Aisle Cooling Explained

The hot aisle / cold aisle configuration conserves energy and lowers cooling costs by managing air flow. This is common practice in every data centre and may seem obvious to most



Hot Aisle , BladeRoom Data Centres

This setup isolates warm air and guides it toward cooling systems, such as CRAC units or air containment systems. By separating hot air from cool intake air, the hot aisle configuration optimizes



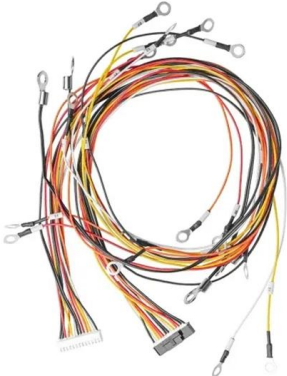
Hot Aisle vs Cold Aisle Containment Explained (Data Center Cooling

Hot aisle and cold aisle containment are foundational concepts in data center design. When implemented correctly, they improve efficiency, reduce energy consumption, extend



Hot vs Cold Aisle Containment: 40% Cooling Savings

Discover how hot and cold aisle containment revolutionizes cooling efficiency, cuts energy costs by up to 40%, and extends equipment lifespan. |



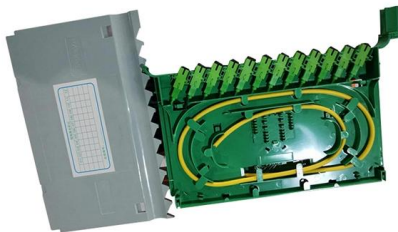


What is the Purpose of a Hot Aisle & Cold Aisle

To achieve high efficiency in your server room or data center, it's essential to segregate hot air and cold air using cold and hot aisle arrangements. Both of

Hot Aisle vs. Cold Aisle Containment for Data Centers

Hot Aisle Containment vs. Cold Aisle Containment The goal of hot and cold aisle contaminants is very similar, even if they are entirely different



Aisle Containment May Hinder Server Room Fire

Server rooms need strong cooling and fire protection systems. QRFS examines aisle containment systems and how they can impede fire protection.

Hot Aisle Containment vs. Cold Aisle Containment:

Assuming a computer room is configured in such a way that either is an option, hot aisle containment may be seen as the better option because it has



Server Room Containment Systems , Hot & Cold Dial Containment in

Whether you need cold aisle containment, hot aisle containment, or a hybrid approach, our expert team ensures maximum thermal efficiency and reduced PUE (Power Usage Effectiveness). In modern



Data Centre Cooling: Hot Aisle and Cold Aisle Design

Containment solutions, like aisle curtains, doors or rigid panels are used to separate hot and cold aisles. When properly sealed, containment ensures that cold air is



Data Center Hot Aisle/Cold Aisle Layout Design

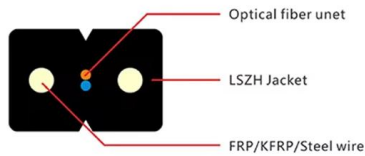
Data Center Hot Aisle/Cold Aisle Layout Design
Looking for ways to keep your Data Center Server Room cool? Consider the hot aisle/cold aisle





Hot & Cold Aisle Containment Explained , AMCO Guide

Learn the science behind hot and cold aisle containment and how it improves airflow management, cooling efficiency, and performance in modern data centers.



Hot And Cold Aisle Containment For Data Center

Aisle Containment System in Data Center Aisle containment is a data center cooling strategy that separates the hot and cold airflows, creating isolated

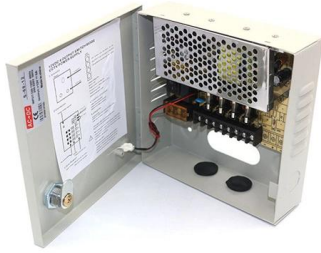
Hot Aisle Containment: The Coolest Guide for 2025 [Data Centers]

Hot aisle containment data centers are engineered to optimize cooling efficiency and minimize energy use by effectively



Why Do Data Centers Need Hot and Cold Aisles?

This article explores how hot and cold aisles operate, explains why aisle separation is critical, and provides practical strategies for improving airflow management to help IT managers optimize cooling



Contact Us

For datasheets, pricing, or custom telecom energy solutions, please visit:
<https://koskolong.co.za>