



**Adam Tas Corridor Energy**

# **Wiring exits from the bottom of the instrument cable tray**





## Wiring exits from the bottom of the instrument cable tray

---



### Instrument Installation: Cabling Guidelines

Fig: Cable tray made of solid steel wire bent to form a "basket" to support Ethernet cables  
General Installation Guidelines for Cable Trays  
Cable

### Instrument Cable Tray Installation Guide

Tie in cable to the tray bottom at approximately 6 feet intervals for



### Cable Tray Ladder Trunking Wire Basket Installation

It should be mounted far enough off the floor or roof to allow the cables to exit through the bottom of the cable tray. If a strut is used for this purpose, mount the

### Typical Instrument Cable Tray Layout PDF

TYPICAL INSTRUMENT CABLE TRAY LAYOUT.pdf -  
Free download as PDF File (.pdf) or view



presentation slides online.



### Cable Tray Design, Layout, and Overall Wiring Planning

Learn about effective Cable Tray Design and Layout for electrical systems. Our guide covers planning, material choice, safety,



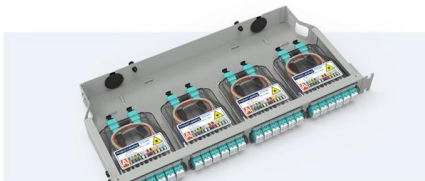
### What is Instrument location layout and Junction box

Instrument location layout is a layout which indicates the exact location of instrument/junction box, trench/trays etc. Trench and duct is the path for



#### Pre-Terminated Patch Panel

- Multi-application support
- Flexible configuration
- Modular design



Cable Gland Plug  
23mm Cable Gland Plug



MPO-4C up to 96 cores  
MPO direct connection 48 ports



Mounting Bracket  
Semi-open mounting holes

### Complete cable tray manual for electrical engineers and

How to design cable tray? Most projects are roughly defined at the start of cable tray design. For projects that are not 100 percent defined before design start, the cost



## Instrument Cable Tray / Trench Layout (Part -12I)

Introduction: As part of Construction Engineering, while preparing the instrument cable tray / trench routing as a construction layout the following basic information is required.



### Pre-Terminated Patch Panel

- Multi-application support
- Flexible configuration
- Modular design



Multi-Functional Sliding Patch Box, Modular



Modular Sliding Patch Box



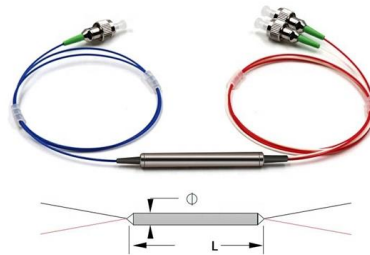
Sliding Patch Box, Modular

## Instrument Cable Installation, Termination, Identification

Cable tray supporting armored cables extending between field instruments and junction boxes shall be ventilated bottom, channel cable tray. The channel cable

## Cable Tray Technical Guide A practical guide to product selection and

**SOLID-BOTTOM CABLE TRAY** Providing additional cable protection, solid-bottom cable tray is sometimes preferred to support and protect numerous small instrumentation and control cables.



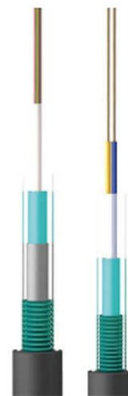
## Instrument Installation: Cabling Guidelines

Unlike conduit, cable trays are open, leaving the cables exposed to the environment. Usually for the cable trays, it is a requirement to have a special



### Instrument Tray Cable

Article 727 of the National Electrical Code (NEC) addresses instrument tray cable (ITC) and its permitted uses. In industrial locations, ITC cable is commonly used for instrumentation circuits in association



### Cable Tray and Reels , Wire and Cable Management

Fast installation with dependable support. Everything you need to build a cable management system, including Cablofil wire mesh cable tray, ladder cable tray,

### ITER Cabling Handbook

A necessary space must be devoted to workers on the cable trays under the false floor (cable tray modifications, pulling and crimping cables) to avoid walking on it.



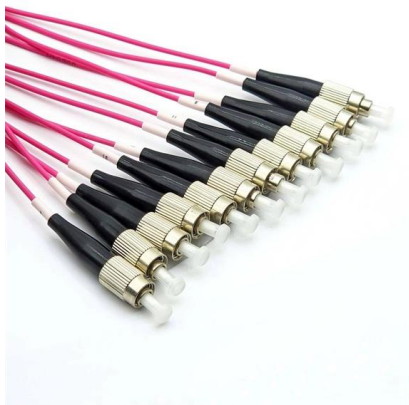


## Compliance Requirements for Instrument Cable Trays

Installing instrument cable trays properly and in compliance with relevant standards is crucial to ensure safety, functionality, and durability. Below is a detailed guide

### CABLE TRAY

Supports for cable trays should provide strength and working load capabilities sufficient to meet the load requirement of the cable tray wiring system. Consideration should be given to the loads associated

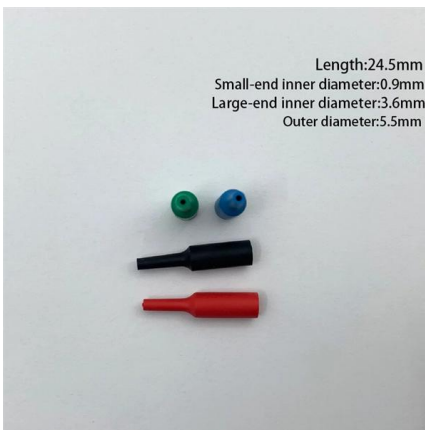


### Cable Tray And Fittings , Graybar Store

A cable tray system is used to support insulated electrical cables used for power distribution, control, and communication. Cable trays are used as an alternative to open wiring or electrical conduit

### Microsoft Word

Cable Tray Type Selection With all the choices in cable trays styles, ladder, ventilated, solid bottom and wire basket, it can be difficult to know which is the right one for your application. This bulletin will help



### **Instrument Location Layout and cable routing layout -**

The number of cables is limited by specific criteria, usually allowing cables to fill up to one layer only, ensuring easy access to the bottom of the tray. Limitation: The

### **Annex I**

This document deals with cables trays, cables and connector installation and segregation, cable trays earthing and E.M.C. directives. These rules shall be applied in the cabling engineering workflow for



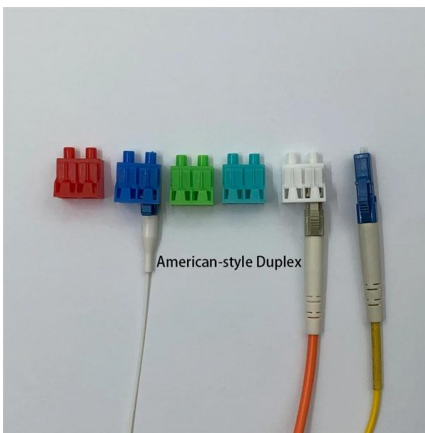
### **Cable Tray, Metallic Tray System Installation and**

This article is about Installation and Commissioning Cable Tray, Metallic Tray System for commercial buildings, plants and refinery projects as per international



## Avoiding Mistakes in Instrumentation Cable Tray

This document lists the most typical mistakes that EPC teams should not make while installing instrumentation cable trays to make sure the plant runs smoothly, is safe, and is in



## Cable tray manual

Where cable tray wiring systems with current carrying conductors are installed in a dust environment, ladder type cable trays should be used since there is less surface area for dust buildup than in

## Cablofil Cable Management , Legrand

Cablofil® Products Cablofil is the global gold standard for total cable management. Explore the one-stop shop for innovative, fast, and dependable cable management systems including wire mesh tray,



## Instrumentation Cable Tray Installation Checklist and

Step-by-step instrumentation cable tray installation guide with safety tips, standards, inspections, and downloadable Excel checklist.



### Cable entry into cabinet/panel -top or bottom?

Plus if you prefer bottom entry, your cables can easily be routed to a cable tray or panduit wire tray for breakout to terminals in a cleaner, more professional manner. I don't know of a



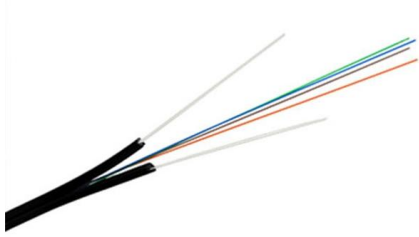
### Using IEC Standards in Cable Tray and Conduit System

Cable tray systems must follow straight, logical paths and avoid unnecessary bends. The distance between supports should align with the tray

### Cable Tray Manual: Based On The 2005 National

Where a cable tray wiring system containing Type TC cables will be exposed to any significant amount of hot metal splatter from welding or the torch cutting of metal





## **Cable Tray Technical Guide A practical guide to product selection and**

In designing supports for a cable tray system, consideration should be given to the loads associated with future cable additions and any additional loading that may be applied to the cable tray system (e.g.,

## **Instrumentation Cable and Wiring Inspection checklist**

This post provides an essential guide to instrumentation cable inspection, ensuring safety, reliability, and compliance for project engineers.



## **Contact Us**

---

For datasheets, pricing, or custom telecom energy solutions, please visit:  
<https://koskolong.co.za>