



Adam Tas Corridor Energy

Wiring of secondary and tertiary power distribution boxes on construction sites





Wiring of secondary and tertiary power distribution boxes on construction sites

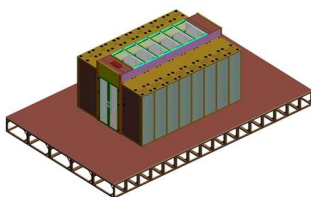


Electrical Installations On Construction Sites

Practical guidance Electrical hazards are a major cause of death and serious injury on construction sites. This industry standard provides practical

Temporary electrical wiring for construction sites

work requires electrical power for many purposes. However, exposure to weather, frequent relocation, rough use and other conditions not normally encountered with conventional wiring systems



Power supply on the construction site

The use of high quality cables, plug and socket connections and IP55 rated power distributors are critical to ensuring a safe and reliable power supply on construction sites.

How To Get Temporary Power for Your Construction

Temporary Power Box A temporary power box, also known as a power spider box, is a portable



electrical enclosure that provides temporary electrical



Electrical installations at construction sites: Industry standard

Industry guide for safe electrical installation at construction sites.



Discover Europe's digital cultural heritage , Europeana

Hier sollte eine Beschreibung angezeigt werden, diese Seite lässt dies jedoch nicht zu.



Key Points Of Installation And Collocation Of Distribution Box In

The wire inlets and outlets in the distribution box and switch box shall be set at the lower bottom of the box. It is strictly prohibited to set them at the top, side, back or door of the box.





Industry standard Electrical installations on construction sites

The information presented in the Industry Standard - Electrical installations on construction sites is intended for general use only. It should not be viewed as a definitive guide to the law, and should be



How to Make Temporary Power Safer on Construction

Loose wiring, exposed connectors, and unstable electrical connections can cause shocks, equipment failures, or costly downtime. This article examines



Electrical System in Buildings

This article covers the electrical system in buildings (including distribution) at a very basic level. We will discuss the general principles for how



What are tertiary connections?

Tertiary connections are electrical grid connections to the tertiary windings of super grid transformers on National Grid's transmission networks.



Three-Winding Transformer (Tertiary Winding): Principle, Construction

Three-Winding Transformer (Tertiary Winding): Principle, Construction, Equivalent Circuit & Applications A three-winding transformer--often called a tertiary winding transformer--adds a third



Key Points Of Installation And Collocation Of Distribution Box In

The wire bundle shall not be in direct contact with the inlets and outlets of the box. The power lines entering the switch box shall not be connected with pins. The inlets and outlets of the mobile



Primary and secondary power distribution systems (layouts explained)

Primary distribution box: three-phase power supply, ground wire and zero wire are introduced from the transformer. Secondary distribution box: from the power line of primary distribution box to temporary



The difference between the first, second, and third levels of

Generally, first level distribution does not allow direct use of electrical equipment, and second level distribution will be by power equipment because it is three-phase electricity, while third



The Meaning and Function of Primary, Secondary, and Tertiary

Secondary: Intermediate panel, routes power to buildings or zones. Tertiary: Final distribution point for equipment or household use. This structure ensures effective power management, safety, and



Temporary Jobsite Power Setup: NEC & OSHA Compliance Guide

Ensure NEC & OSHA compliance with your temporary jobsite power setup using a reliable industrial portable power station.



The Meaning and Function of Primary, Secondary, and Tertiary

This explanation aims to clarify the roles and functions of primary, secondary, and tertiary distribution boxes, enhancing the understanding of these critical components in electrical distribution





Electrical safety in the construction industry

Electrical hazards on construction sites can put workers at risk of injury or death. Learn how to control electrical risks on construction sites, fulfil your legal obligations, and keep yourself and

Three-Tier Power Distribution System in a Newly Constructed

Learn about the three-tier power distribution system (main secondary tertiary distribution boards) in a new residential area including their roles connections and safety measures for 0.4kV power supply.



Power supply on the construction site

A site power distribution board is usually an electrical distribution box equipped with various sockets to provide power for different equipment and machinery. A construction power distribution box may also

The Primary and Secondary distribution in electrical

Understanding the fundamental distinction between Primary and Secondary distribution in electrical systems is pivotal for designing efficient and



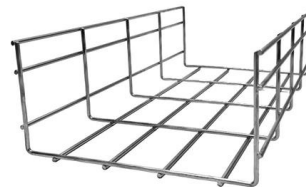
Electrical practices -- construction and demolition sites

This fact sheet explains how to apply the requirements shown in AS/NZS 3012:2019 Electrical installations - construction and demolition sites (AS/NZS 3012:2019),



AS/NZS 3012:2010 Electrical installations Construction and demolition sites

The objective of this Standard is to establish sound practices for the safe use of electricity at construction and demolition sites. It is to be used in conjunction with AS/NZS 3000, Electrical



ENERGYBOX Assemblies for Construction Sites (ACS)

ENERGYBOX is a complete range of Assemblies for Construction Sites (ACS) pre-wired boards that can be wall-mounted or installed on a support. The panels are



Contact Us

For datasheets, pricing, or custom telecom energy solutions, please visit:
<https://koskolong.co.za>