



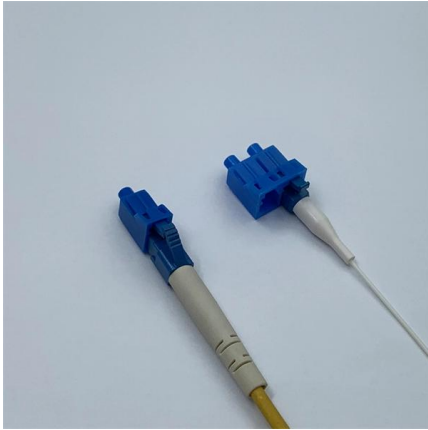
**Adam Tas Corridor Energy**

# **Xds All-Internal Cable Routing Aluminum Frame**





## Xds All-Internal Cable Routing Aluminum Frame



### Compare: 2026 CUBE ATTAIN, SLX vs Trek Domane AL 5 Gen 4 vs

The CUBE ATTAIN, SLX, Trek Domane AL 5 Gen 4, and X-LAB RS7 are all endurance bikes with upper mid-range components and shimano 105 hydraulic disc brakes. The RS7 has a carbon frame,

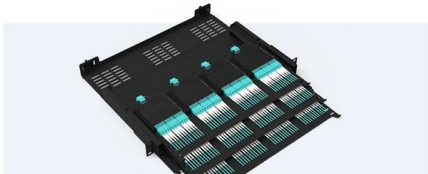
### Technology - XDS Bikes

ULC Ultra Light Carbon A focus of XDS has been on ultra-light bicycle technology. We specialize in manufacturing ultra-light carbon-fibre bicycle frames, forks, parts



#### Pre-Terminated Patch Panel

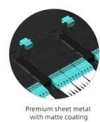
- Standard 19" width
- Max 144 fibers in 1U
- Ultra-High Density Ready



Dual-row, easy install & maintain



Lightweight ABS MPO cassette



Premium sheet metal with matte coating

### XDS X-LAB AD8 Road Bike

Streamlined frame profiles, dropped seat stays and internal cable routing help reduce drag while keeping the design clean and modern. A fully integrated cockpit completes the race-ready

### Compare: 2025 Canyon Endurace AllRoad vs 2026 CUBE ATTAIN

The Canyon Endurace AllRoad, CUBE ATTAIN C:62, RACE, and X-LAB RS5 are all endurance



bikes with shimano cues hydraulic disc brakes. The ATTAIN C:62, RACE has a carbon frame, while the



### Internal cable routing damage and safety

Just about any experienced shop mechanic could tell you that brake hoses and derailleur housings can be surprisingly destructive, and there are

### adding cable routing to bike frame

By incorporating internal cable routing, XJD aims to streamline the bike's appearance while improving aerodynamics and reducing maintenance. This article delves into the various aspects of adding cable



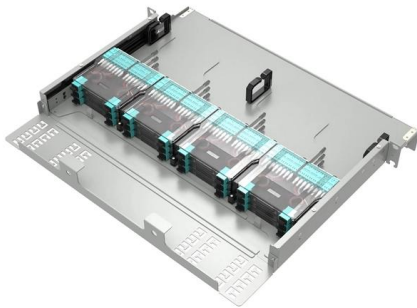
### Compare: 2026 CUBE ATTAIN, SLX vs Giant Contend SL 0 vs X-LAB

The CUBE ATTAIN, SLX, Giant Contend SL 0, and X-LAB RS7 are all endurance bikes with upper mid-range components and shimano 105 hydraulic disc brakes. The RS7 has a carbon frame, carbon



## The Great Internal Cable Routing Debate

I figure I may as well make my first topic about a hot button issue. There's obviously a lot of debate surrounding internal



## WONG CYCLE SHOP

XDS Junchi 27.5 MTB Frame rm599 flush weld  
Technology ICE internal cable routing X6 Premium  
Ultralight alloy Material Tapered Headtube Build  
in Disc Brake Weigh:1.65 kg Frame size

## xds mountain bike frame

? Key Features One of the standout features of the XDS mountain bike frame is its advanced suspension system. This system is designed to enhance traction and control, especially on



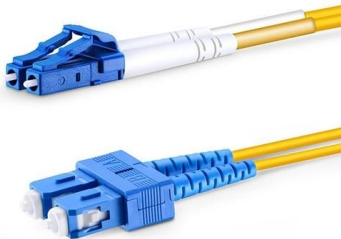
## XDS Mountain Bike Model Rocket 520 Alloy Internal

The XDS Mountain Bike Rocket 520 features an aluminum internal cable routing frame and Shimano Altus M2000 equipment for smooth performance. This 17



## road bike full internal cable routing

What is Full Internal Cable Routing? Full internal cable routing refers to the design where all cables and housing are routed inside the frame of the bike. This design choice minimizes exposure to the



## X-LAB Official, by XDS

Adventure-ready gravel bike built for control, comfort, and conquest. Versatile electric bike for everyday riding, commuting, and convenience. For over 30 years, XDS has built performance bicycles through

## XDS Brings WorldTour Level Tech to the Masses (RT9, AD8, GT8)

The world's lightest production road frame, affordable aero rocket, and versatile, yet affordable gravel, meet the new X-LAB frames.





### **XDS X-LAB AD9 Road Bike**

In addition, a fully integrated cockpit and internal cable routing complete the clean, race-ready design. The XDS-ASTANA team races the AD9 in the UCI WorldTour and Davide Ballerini

### **bike full internal cable routing**

Definition and Overview Full internal cable routing refers to the design where all cables and hoses are routed inside the bike frame. This approach contrasts with traditional external routing, where cables



### **XDS AD300 Road**

Check out the XDS AD300 road bike in action! This bike features an aerodynamic aluminum frame, one-body alloy handlebar, and fully internal cable routing for a sleek and efficient

### **XDS AD300 18sp // Road Bike , XDSBikeco**

Featuring a lightweight aluminum frame and fork, this bike combines durability with the performance needed for road cycling enthusiasts. Whether you're commuting



## How to Set Up a Full Internal Cable Routing Frame for a

Setting up a full internal cable routing frame can drastically enhance the aesthetics and performance of your bike. By hiding the cables within the



## full internal cable routing road bike

What is Full Internal Cable Routing? Full internal cable routing refers to the design where all cables are routed through the frame of the bike, completely hidden from view. This design contrasts with



## Featured Product: Internal Cable Routing for Shimano

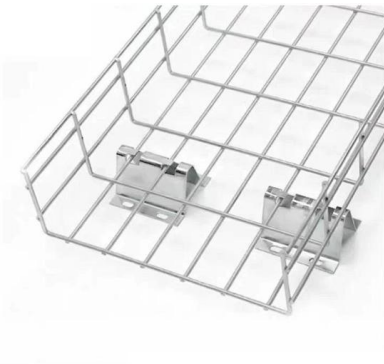
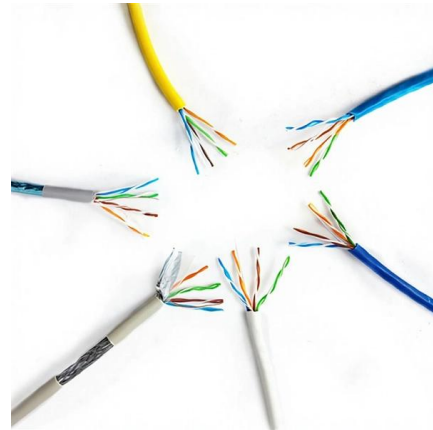
Since the introduction of Di2, Seven has been building frames with standard cable routing that allows riders to use zip-ties to secure the Di2 cables. Now we offer





## Cable Routing Options

Cable Routing Options Seven offers three kinds of cable routing to make every rider happy. These styles of routing have benefits and



## Compare: 2025 Canyon Endurance AllRoad vs 2026 CUBE ATAIN

The Canyon Endurance AllRoad, CUBE ATAIN C:62, RACE, and X-LAB RS7 are all endurance bikes with shimano cues hydraulic disc brakes. The Endurance AllRoad has an aluminum frame, while the

## xds mountain bike frame

The frame also includes internal cable routing, which not only improves aesthetics but also protects cables from dirt and debris. Furthermore, the XDS frame is available in multiple sizes,



## XDS AD300 road bike! Designed for speed and performance, it

Ride green, ride clean! Hop on our XDS AD300 Road Bike and contribute to a cleaner planet. Featuring an aerodynamic aluminum frame, integrated alloy handlebars, and internal cable



### **XDS AD300 18sp // Road Bike , XDSBikeco**

Discover the XDS AD300 road bike! Lightweight aluminum frame, aerodynamic design, and 18-speed drivetrain make it perfect for city commutes, fitness rides,



### **XDS AD300 road bike! Designed for speed and performance, it**

Featuring an aerodynamic aluminum frame, integrated alloy handlebars, and internal cable routing, this bike is both stylish and high-performing. Equipped with Shimano Sora 18-speed

### **XDS FUNDAY PRO BMX Aluminium Frame**

XDS FUNDAY PRO BMX Aluminium Frame with Internal Cable Routing 9.6Kg Price: RM 999 (NEGO)





## **Building a Steel Road Bike Frame with Fully Integrated**

Internal cable routing on a steel road bike - is it worth it? Many riders love the clean look of hidden cables, but figuring out the right parts can be a

## **Contact Us**

---

For datasheets, pricing, or custom telecom energy solutions, please visit:  
<https://koskolong.co.za>