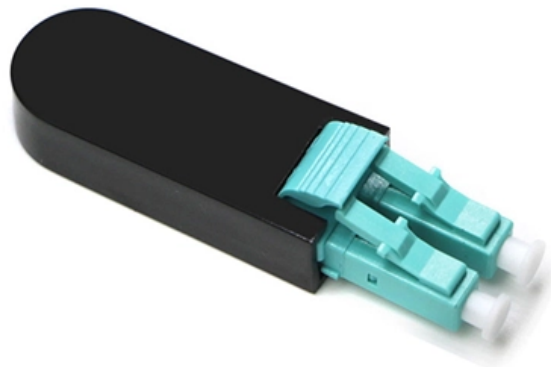




Adam Tas Corridor Energy

Zinc-plated grounding electrode of distribution box





Overview

A Galvanised Steel Earth Rod is a steel grounding electrode coated with a layer of zinc (via hot-dip galvanizing or electroplating) to protect against corrosion. From connectors that help wire buildings on Earth to cable ties that help put machines in space, we continue to work every day to make, market, design and sell products that provide a smarter, safer and more reliable flow e to welded ground grid connections. Earthline™ is a zinc-coated steel conductor manufactured by The Platt Brothers & Company for grounding grid applications. Zinc anodes serve not only in cathodic protection roles but also function as earthing cells.



Zinc-plated grounding electrode of distribution box

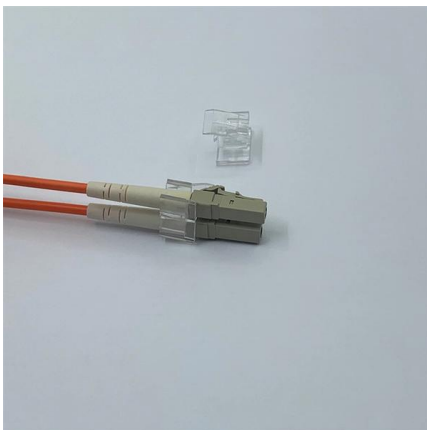
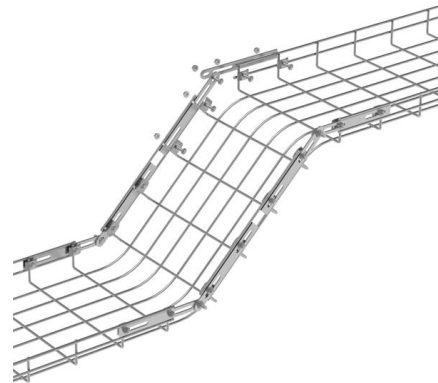


Zinc Earthing Rod - Rustaway

These anodes are configured as earthing cells with two zinc rods, insulated separately. Typically, one electrode is connected to the structure requiring protection, while the other is linked to an earthing

CATALOG Blackburn® Grounding system

-- Overview The E-Z-Ground™ system Blackburn® E-Z-Ground™ compression connectors represent a low cost, code-approved alternative to welded ground grid connections. E-Z-Ground connectors



Grounding, Bonding and nVent ERICO Cadweld

The chemical ground electrode is useful for providing an effective earth in poor soil conditions where space for electrodes is limited. Applications include telecommunications, power generation and

DISTRIBUTION BOX

Each DISTRIBUTION BOX and controller must be grounded. On the US market, a 5.26 mm² (10 AWG) ground wire must be used, and in all other



markets a 6 mm 2 must be used.



How to Ground an Electrical Panel: A Complete Guide

Key Takeaway Grounding an electrical panel is essential for electrical safety, protecting both equipment and people from electric shock or fire risks. Key

Correct Connection Method Of Grounding Wire Of

Open the distribution box and find the position marked with the grounding plate or PE letter. This position is the connection point of the grounding



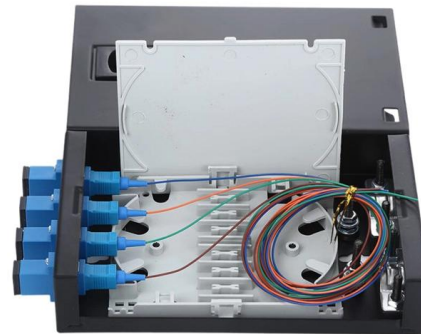
JLC Field Guide: Grounding

JLC Field Guide: Grounding The purpose of grounding is safety: A ground wire generates a short circuit and trips the circuit breaker or fuse when



51628-TB , Electrodes , Blackburn / EZGROUND , Connectivity & Grounding

Pre-galvanized Steel Ground Electrode Box, 14 Gauge, 10 inch Diameter, 12 inch Depth. Hardware Includes 1/4-20 x 3/4 inch long Round Head Socket and Zinc Hex Nut.



Box: Ground Electrode :: Slacan

Box: Ground Electrode Inspection and test of the ground rod connections at substation and similar grounding installations is made easy by the Ground Electrode Box as it provides ready access to the

Understanding Grounding of Electrical Systems , NFPA

The grounding electrodes then get connected back to the building's electrical service via a grounding electrode conductor (GEC). The GEC, at the



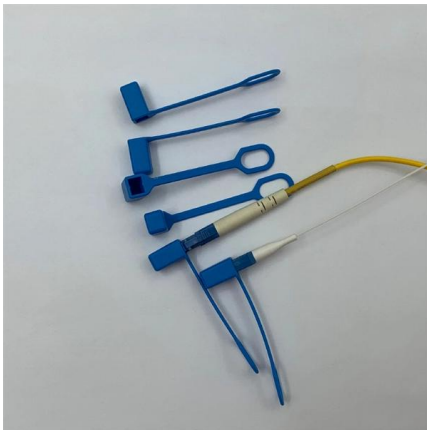
The Complete Guide to Ground Rods in Electrical Systems

Ground rods ensure safe electrical grounding by channeling excess electricity into the earth. Learn about their design and function.



Ground Rod in the Grounding System

What is a Ground Rod? A ground rod, also known as an earthing rod, grounding rod or ground electrode, is a long, slender metal rod that is typically made of

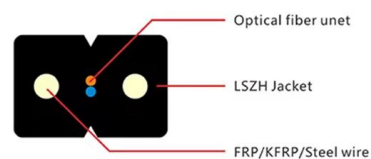


Electrical Grounding and Earthing

The earthing or grounding system involves connecting the metallic components of electric machinery and devices to an earth plate (ground rod) or earth electrode

Ground Connections

Steel Ground Plate, EG, No Connector, 16" x 10" x 1/4" Unique grounding solution for distribution pole grounding. Includes a welded steel rod pigtail.





Earthline(TM) Grounding Rods

Earthline(TM) is a zinc-coated steel conductor manufactured by The Platt Brothers & Company for grounding grid applications. Earthline(TM) has a steel core size of 5/8"

Grounding Electrical Distribution Systems , part of Grounding

The first concern and the most important reason for proper grounding techniques are to protect people from the effects of ground-faults and lightning. Creating an effective ground-fault current path to

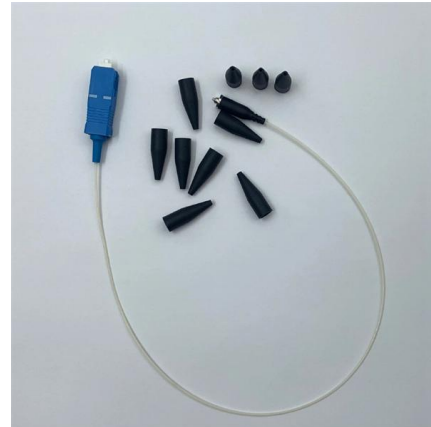


Zinc Earthing Cell (Double)

As a world-class leader of cathodic protection anode materials, Jennings Anodes's zinc anode rod is proven to be an ideal product for cathodic protection of buried

HDG Earthing Rod , GI Earthing Rod Manufacturer

Hot Dip Galvanized (GI) Earthing Rods are steel rods coated with a layer of zinc through the hot-dip galvanizing process. This coating provides exceptional



DISTRIBUTION BOX

Each DISTRIBUTION BOX and controller must be grounded. On the US market, a 5.26 mm² (10 AWG) ground wire must be used, and in all other markets a 6 mm² must be used.

SECTION 26 05 26 GROUNDING AND BONDING FOR

This section specifies general grounding and bonding requirements of electrical equipment operations and to provide a low impedance path for possible ground fault currents. "Grounding electrode



Ground Rods , nVent ERICO

The Copper-Bonded Ground Rod, One Pigtail are manufactured to provide a consistent, high-quality finished product. These rods combine the strength of steel for ease of installation and long-lasting





Grounding Systems Primer

The lower the soil resistivity, the lower the effective grounding electrode resistance will be as measured by a ground resistance tester. Grounding systems can range in complexity from a single rod driven



Galvanised Steel Earth Rod

A Galvanised Steel Earth Rod is a steel grounding electrode coated with a layer of zinc (via hot-dip galvanizing or electroplating) to protect against corrosion.

Grounding Systems , PDF Catalogues , ABB Electrification Canada

Browse our selection of grounding systems, featuring ground clamps, connectors, and rods for secure and reliable electrical connections.



Electrical grounding explained

Key components of grounding Different components work together to form an integrated grounding system that provides safety for people and



GROUNDING SYSTEMS

Type TTC -Transformer tank ground connectors
Transformer grounding connectors are cast of high-conductivity bronze; 1/2 in.-13 stud fits all standard EEI-NEMA distribution transformers



Contact Us

For datasheets, pricing, or custom telecom energy solutions, please visit:
<https://koskolong.co.za>