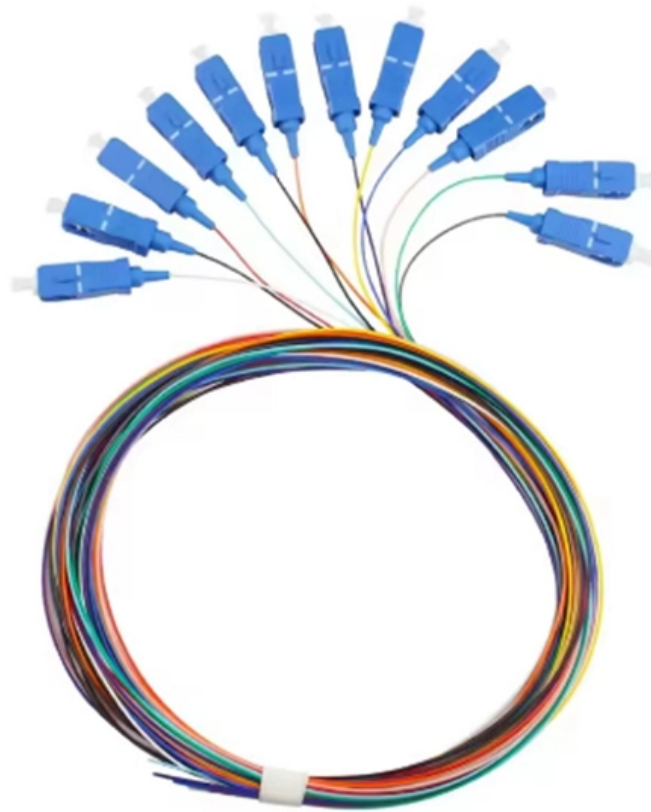




Adam Tas Corridor Energy

Zone division of fiber optic switches



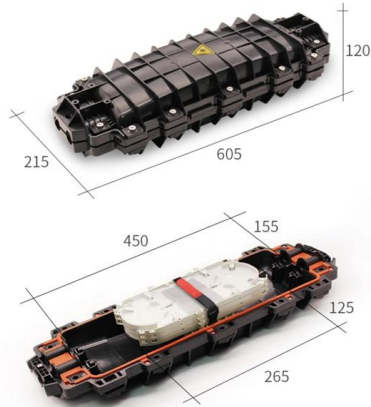


Overview

This section uses examples to describe the principles for dividing zones on Fibre Channel switches. In a zone, a specific switch and any other device can communicate with each other. The Fibre Channel Industry Association (FCIA) is a mutual benefit, non-profit, international organization of manufacturers, system integrators, developers, vendors, and industry professionals, and end users Promotes the advancement of Fibre Channel technologies and products that conform to the. Fibre Channel zoning allows you to partition the Fibre Channel fabric into one or more zones. Zone objects, such as the zone configuration name, zone name, and alias name, can have the following characters, if all switches in the fabric and both CPs in a chassis system are running Fabric OS 8. If you want to use a graphical interface to divide the optical fiber switch into zones, you must install java web start on the PC side, and it.



Zone division of fiber optic switches



Fundamental Questions and Answers on Fibre Channel Zoning

Do you see the same? A: We agree with both of your observations that in the FICON mainframe environment: 1) there is a requirement that switches support 'static' link address

Fibre Channel Zoning Fundamentals All You Need to Know

Different Zone Sets may be created for different Fabric configurations For example: one Zone Set for normal operation, and another Zone Set for backup operations



Best Practices for Zoning

Switches with earlier versions of Fabric OS do not have the same capability to view all the functionality that more recent versions of Fabric OS provide, as functionality is backward

Fiber Optical Switch: Definition and Operation

Fiber optical switches operate on the principle of selectively switching optical signals between



fibers. When a message is sent from one device, the fiber



Unlocking the Power of Fiber Switches: A Comprehensive Guide to

Jason Reeves Fiber switches play an essential role in the architecture of the latest virtual data networks, providing high capacities, better network operability, and excellent dependability. With

Types of Fiber Optic Switches, LinkNewNet

What is a fiber optic switch? And what are the types of fiber optic switches? A fiber optic switch is a high-speed network transmission relay device. Compared with ordinary switches, they



Glossary of fiber optic network terms

Glossary of fiber optic network terms Suggest a term We're always adding new fiber optic network terms to our list. If you can't find what you're looking for, get in



Understanding Fibre Optic Cables & Types with Network Switches

This video provides a real world overview of using Fibre Optic cables in the data centres for connectivity between network switches and patch panels.00:09 Fi



What Is Passive Optical Networking (PON)?

Passive optical networking (PON), like active optical networking, uses fiber-optic cabling to provide Ethernet connectivity from a main data source to endpoints.

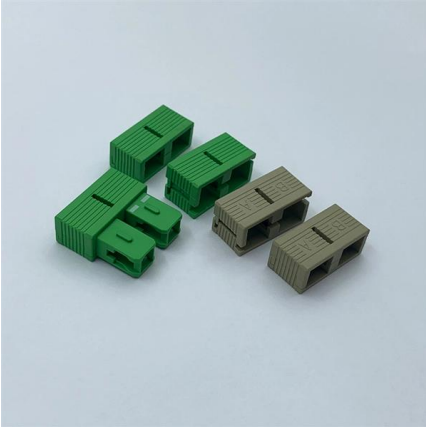
Fiber Optical Switch Definition and Operation

Fiber optical switches operate on the principle of selectively switching optical signals between fibers. When a message is sent from one device, the fiber



What type of fiber optic cable should be used to connect 2 switches

So I have a business that is in a huge warehouse with 2 data closets, and large POE switches at each location. They need to be linked together on the same network, and the distance



How Fiber Switches Divide Zones

Considering the reduction of "ping-pong effect" and load balancing, it is best to use a pair of switches when dividing zones. One relationship, that is, one zone only connects one host and one array,



A simple guide to industrial fiber optic switches

Benefits of industrial fiber optic switches: Fiber optic switches offer a number of benefits for industrial networks. Here are some of them: Industrial fiber optic

Choosing the Right PM Fiber Switch for Your Optical Network: A

Conclusion Choosing the right PM fiber switch is essential for ensuring the performance and reliability of your optical network. By considering key factors such as switching speed, insertion



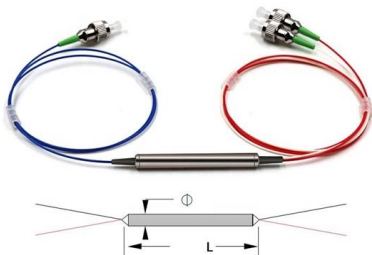


The FOA Reference For Fiber Optics

The main difference with a PON is the amount of fiber required for the network, especially if the service provider's switches are located at the head end. Switches

Zoning Overview

This chapter describes zoning and provides the procedures to manage zones. An administrator can partition the network into logical groups of devices through zoning.

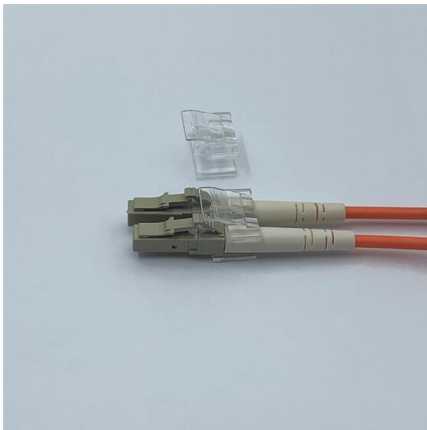
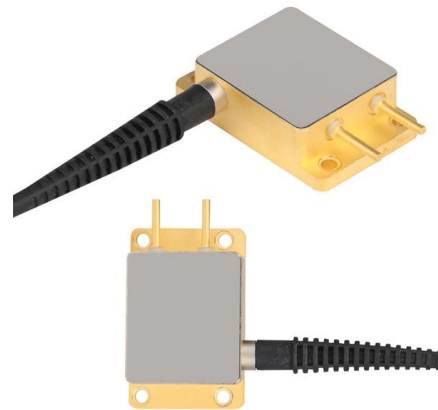


Solutions , Nokia

Optical networks Nokia optical network solutions for transport networks with advanced coherent optical engines, scalable open optical line systems, and AI

Fibre Channel Zoning Basics

The Fibre Channel Industry Association (FCIA) is a mutual benefit, non-profit, international organization of manufacturers, system integrators, developers, vendors, and industry



FCIA-FC-Zoning-Basics-Final.pdf

It discusses what zoning is, why it is needed for access control and isolation, how zoning works through configuration and activation of zone sets and zones, and

Planning for fabric zoning

With the logical switch feature, you can divide a physical chassis into multiple fabric elements. Each of these fabric elements is referred to as a logical switch. Each logical switch functions as an



Everything There Is to Know about Fiber Optic Switches

A fiber optic switch is a network device designed to manage and direct optical signals. Unlike traditional electrical switches, which process data via copper-based transmission, fiber optic variants utilize light





IT Services

This specification details the requirements for the planning, installation, operation and documentation of In-formation Technology and Telecommunications cabling using copper and fibre optic cabling and is



Fiber Optic Splitter: How It Works & Types Guide

This guide demystifies fiber optic splitters, explaining their design, operating principles, types, key specifications, and real-world applications.

Configuring Fibre Channel Zoning

Fibre Channel zoning allows you to partition the Fibre Channel fabric into one or more zones. Each zone defines the set of Fibre Channel initiators and Fibre Channel targets that can communicate with each



Everything Involved in Fiber Optic Networks

Contents Fiber Optic Networks In the telcos, singlemode fiber is used to connect long distance switches, central offices and SLCs (subscriber loop carriers, small



Application Guide: Connecting Fiber-ready Network

Application Guide: Connecting Fiber-ready Network Switches Fiber optic cabling is increasingly used to connect network switches and other datacom equipment,



Storage Networking 101: Understanding Fibre Channel Zones

Fibre Channel (FC) has more security mechanisms built-in that most people realize. They are largely underutilized and misunderstood, so SANs are said to be a security problem. This Storage

How Can I Divide Zones on Fibre Channel Switches?

Fibre Channel switches are cascaded across DCs. To enable interworking between controllers of storage systems in the active-active DCs, zones are created. In addition, zones help form redundant





Fiber Optic Network Managed Switches: Key to Next

Fiber optic networks have become indispensable to many different companies since controlled switches offer scalability, security, and continuous

Best Practices for Zoning

Whenever possible, peer zones are recommended instead of other zoning schemes such as single-initiator, one-to-many, or flat zoning methods. See Peer Zoning for more information.



Contact Us

For datasheets, pricing, or custom telecom energy solutions, please visit:
<https://koskolong.co.za>